

ICONICS Automation Software Suite



ICONICS Suite™



GLOBAL IMPACT OF MITSUBISHI ELECTRIC



Through Mitsubishi Electric's vision, "Changes for the Better" are possible for a brighter future.

Changes for the Better

"Changes for the Better" represents the Mitsubishi Electric Group's attitude to "always strive to achieve something better", as we continue to change and grow. Each one of us shares a strong will and passion to continuously aim for change, reinforcing our commitment to creating "an even better tomorrow".

Mitsubishi Electric is involved in many areas including the following:

Energy and Electric Systems

A wide range of power and electrical products from generators to large-scale displays.

Electronic Devices

A wide portfolio of cutting-edge semiconductor devices for systems and products.

Home Appliance

Dependable consumer products like air conditioners and home entertainment systems.

Information and Communication Systems

Commercial and consumer-centric equipment, products and systems.

Industrial Automation Systems

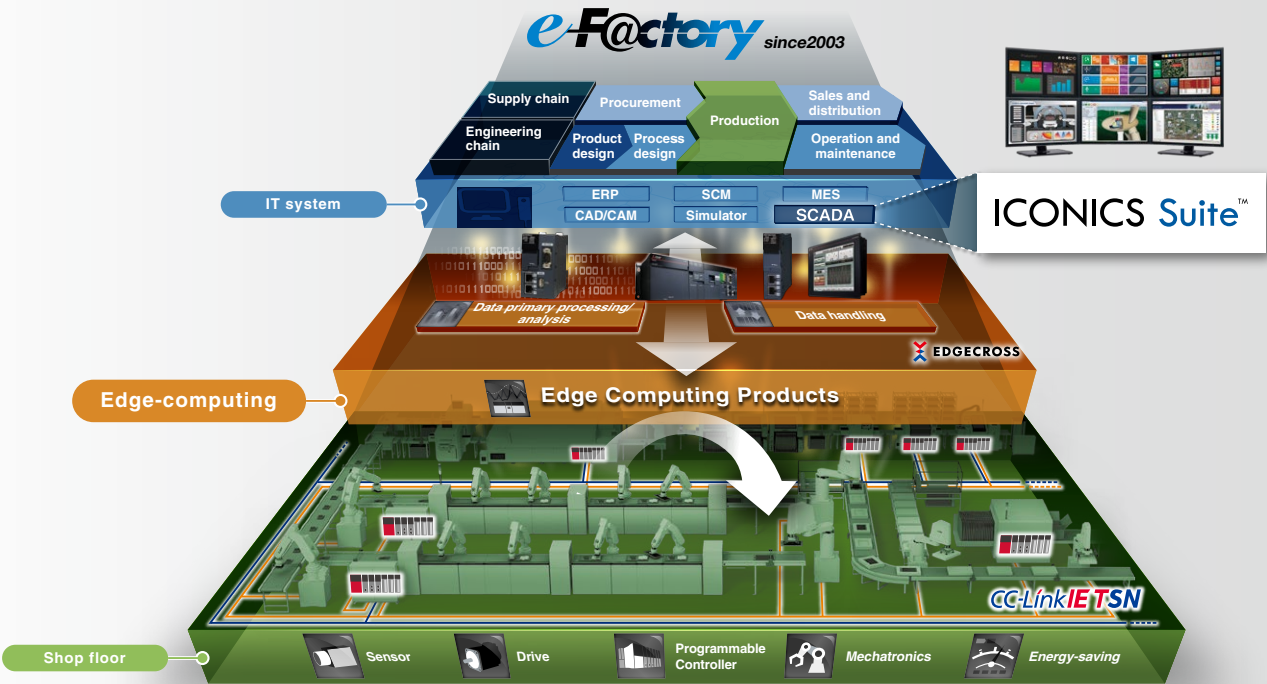
Maximizing productivity and efficiency with cutting-edge automation technology.

Our advances in AI and IoT are adding new value to society in diverse areas from automation to information systems. The creation of game-changing solutions is helping to transform the world, which is why we are honored to be recognized in the 2019 'Forbes Digital 100' as one of world's most influential digital corporations.



e-F@ctory

e-F@ctory is the Mitsubishi Electric solution for adding value across the manufacturing enterprise by enhancing productivity, thereby simultaneously reducing maintenance and operating costs, and enabling the seamless flow of information throughout the plant. e-F@ctory uses a combination of factory automation and IT technologies in combination with various best-in-class partner products through its alliance program.



About ICONICS



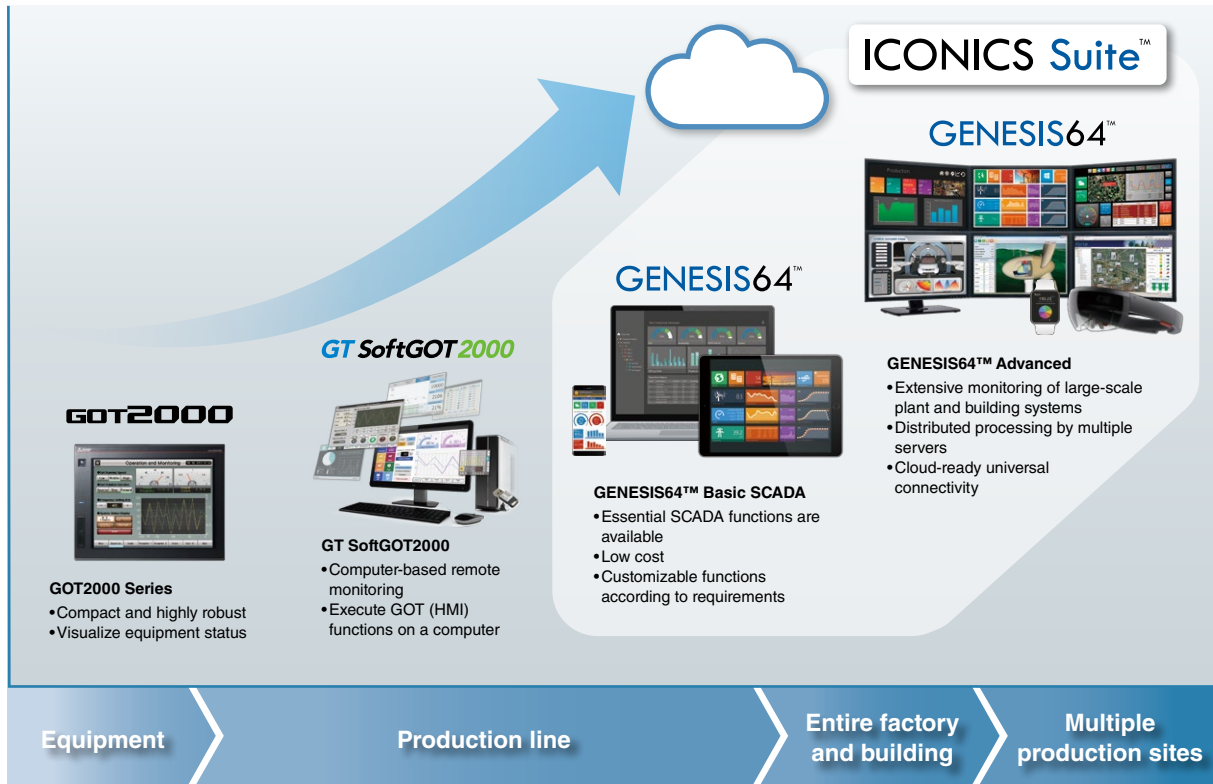
ICONICS, a group company of Mitsubishi Electric Corporation, serves as the software center of excellence for Mitsubishi Electric's Factory Automation Systems Group. Its visualization, analytics, mobile, IoT, and cloud solutions improve productivity, reduce integration time and operating costs, and optimize asset utilization. ICONICS solutions, combined with the knowledge and industry expertise of Mitsubishi Electric, maximize value to the customer by monitoring and controlling automation processes. ICONICS award-winning software boasts over 375,000 installations in Factory Automation (FA), Process Automation (PA), and Building Automation (BA) customers in over 100 countries worldwide.

Contents

Product lineup	4	Functions	22
Solutions for every role	8	Flow of product selection	34
Operator role	10	How to count tags	37
Engineer role	14	License registration procedure	40
Executive role	18	Operating environment/Product list	44
System integrator role.....	20		

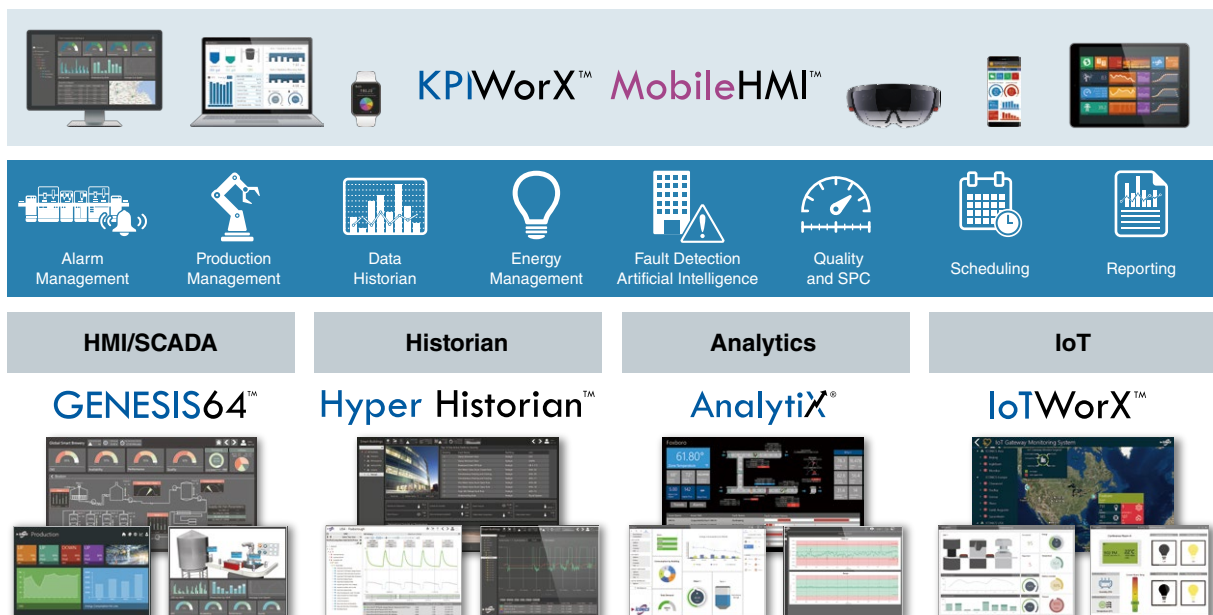
Mitsubishi Electric Visualization products

Flexible HMI solutions that scale to fit your needs



ICONICS Suite™ for integrated monitoring and control

GENESIS64™ is just one in the flexible portfolio of products that is part of the ICONICS Suite™. The scalable software solutions feature advanced visualization technology to run on any desktop or mobile device, high availability, centralized configuration, and ability to connect to a wide variety industry standard communication protocols.



■ GENESIS64™ Basic SCADA Entry-level SCADA package



- Basic SCADA functions
- State-of-the-art, real-time visualization
- ANSI/ISA-18.2 compliant alarm management
- Robust, reliable historical data collection

■ GENESIS64™ Advanced Full-fledged functionality



- Extensive monitoring of enterprise-wide plant and building systems
- Scales to large, distributed systems
- Support for secure cloud communications

ICONICS Suite™ is ideal for any industry

Automotive



Food/beverage



Logistics



Building automation



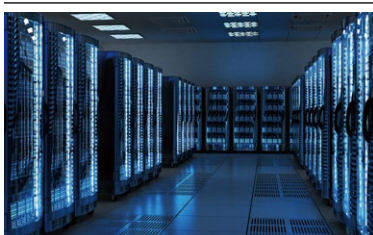
Water treatment



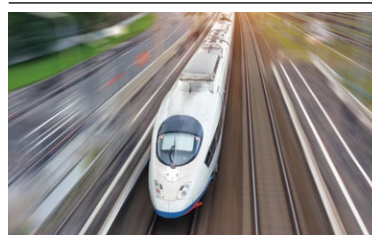
Oil/natural gas



Data center



Transportation



Pharmaceutical

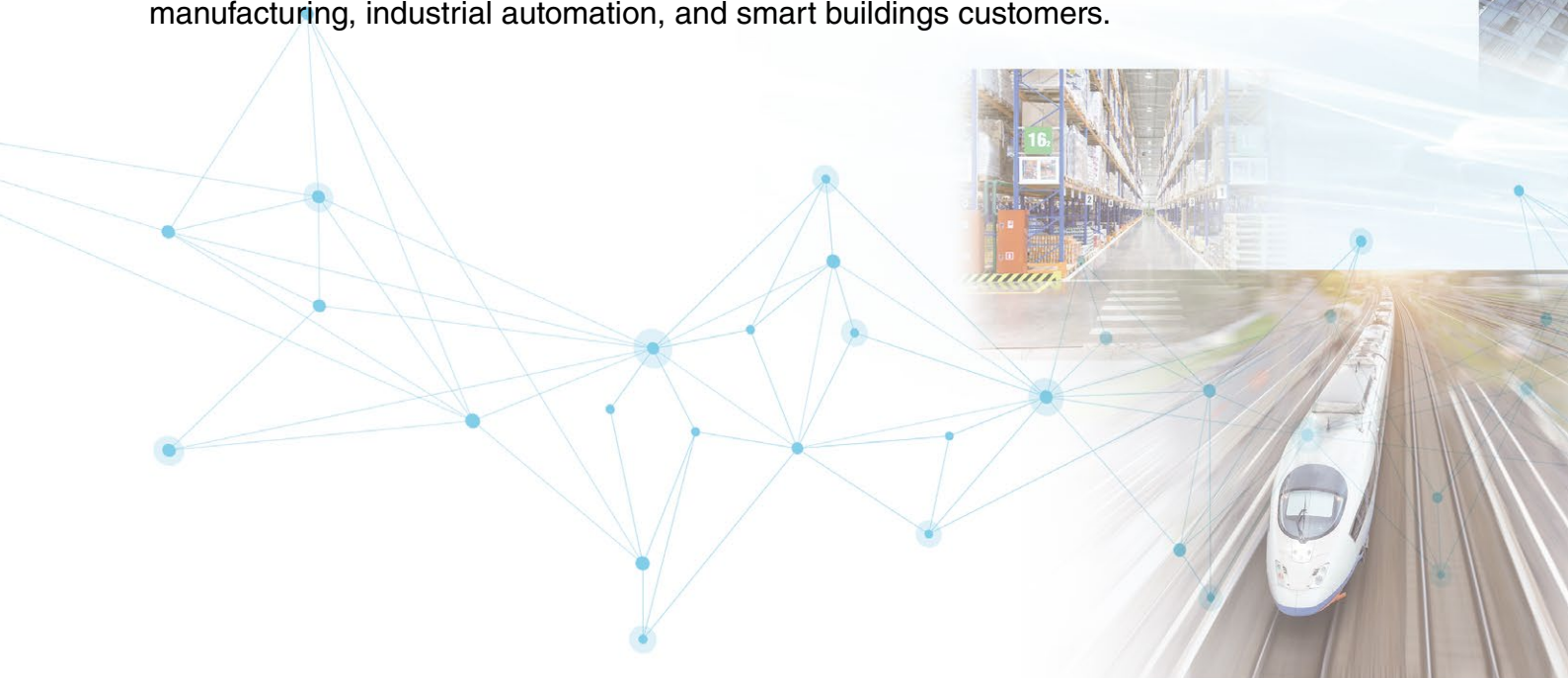


ICONICS Suite™

Make the Invisible Visible™

Real-time insight for operational excellence

This cutting-edge software delivers real-time visualization, mobility, analytics, and connectivity to deliver a contextualized view of enterprise operations for manufacturing, industrial automation, and smart buildings customers.



CONNECT

GENESIS64™ universal connectivity platform supports industry standard open protocol, accelerating integration of all kinds of devices, equipment, and systems, resulting in convergence of IT and OT*1.

*1. OT: Operational Technology

CONTEXTUALIZE

Asset-based organization and navigation facilitates data normalization, comparisons, and situational awareness to get to the root cause quicker through contextualized and actionable information.

VISUALIZE

Secure, real-time visualization on any device is critical to keeping operations running smoothly. GENESIS64™ scales from desktops to browsers, tablets, smartphones, and wearable devices.

DATA UTILIZATION

Improve operational productivity and quality with interactive analytics. Industry applications include OEE*2, SPC*3, energy, and fault detection to provide insight from edge to cloud.

*2. OEE: Overall Equipment Effectiveness
*3. SPC: Statistical Process Control



Operator role

Production management

Equipment maintenance



Improve visibility and operational efficiency

▶ P.10

Drive process improvements with actionable information

▶ P.12

Engineer role

Preventive maintenance

Energy saving

Remote monitoring



Identify and address root cause issues

▶ P.14

Configure highly reliable systems

▶ P.17

Executive role

Business improvement

Big data utilization

Remote monitoring



Gain critical insight into your operations with KPIs*¹ and analytics

▶ P.18

Manage global deployments across the enterprise

▶ P.19

*1. KPI: Key Performance Indicator

System integrator role

Easy connectivity and integration

Efficient engineering



Custom solutions to develop value-added services

▶ P.20

Reduce engineering time

▶ P.21

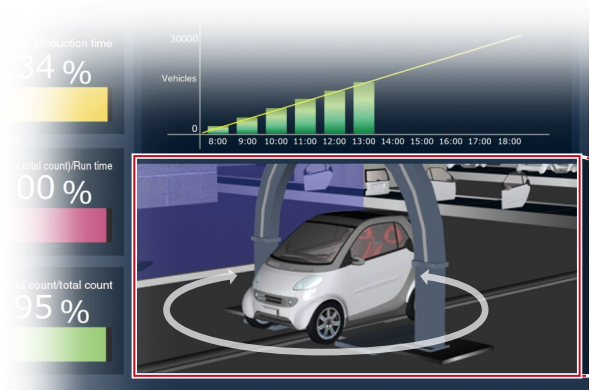
Improve visibility and operational efficiency

Case 01 Production and equipment status need to be monitored to achieve operational excellence

Solution

- Leverage universal connectivity to visualize all related information within a fast, responsive, and intuitive graphical environment
- Support for standard internet browsers and apps on Android™ and Apple® platforms
- Read/write and monitoring capabilities from any device
- Advanced visualization with 2D and 3D models and animations

3D model angle can be changed



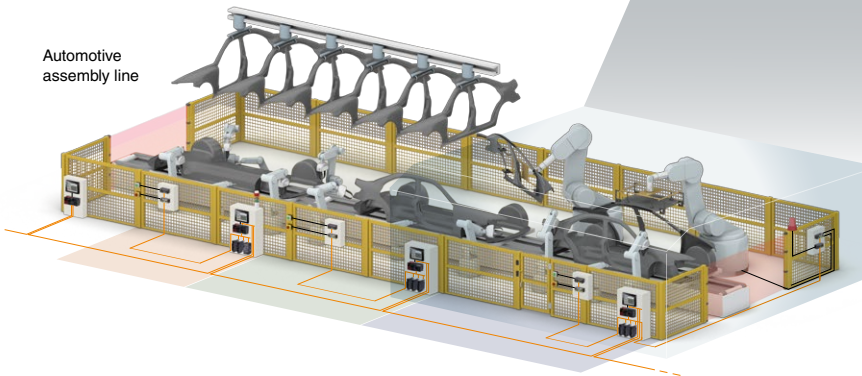
Visualize production status

GraphWorX™ Graphic creation/visualization

Display various information on production status and 3D models of monitored targets on one screen



Automotive assembly line



View screens using a web browser on any mobile device such as computer, tablet, smartphone, and wearable device

WebHMI™/MobileHMI™

▶ Remote monitoring on any smart device

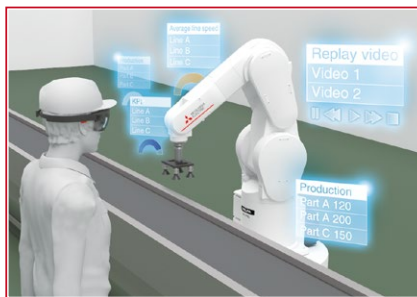
Case 02

Identify errors quickly

Solution

Pinpoint abnormal data patterns and send email notifications. Analyzing the alarm history can quickly identify the root cause

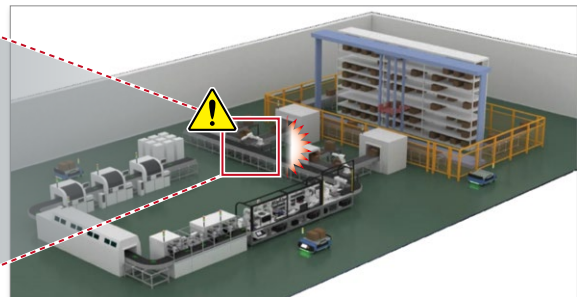
- Alarm list display (intuitive sort and filter function to detect errors)
- Alarm notification by emails
- Check abnormal data shown in AR on a wearable device



Data related to a faulty device can be checked in AR via a wearable device

WebHMI™/MobileHMI™

▶ Remote monitoring on any smart device



Check faulty device on the factory drawing

- After checking alarm details, a faulty device can be identified

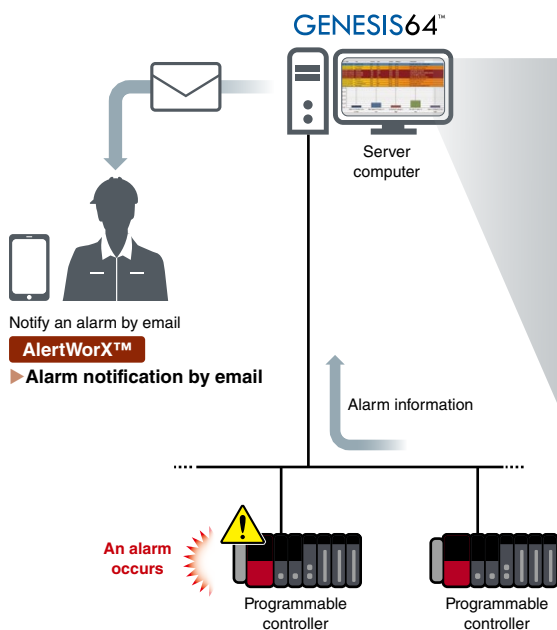
GraphWorX™

▶ Graphic creation/visualization

- Visualize fault causes in order of probability for troubleshooting
- Fault cases can be checked according to priority

Facility AnalytiX®

▶ Advanced fault detection and diagnostics (FDD) technology **Option**



An error occurs

Date	Tag	Priority	Type	Quality	Category	Description
5/23/2013 5:30 PM	Coastal Level	100	LO	Good	Limit	Coastal level is low. Possible leak?
5/23/2013 5:31 PM	Pressure	100	High	Good	Limit	Belt Speed of Pump1 is wrong
5/23/2013 7:26 PM	Tank PSI	800	LO/LO	Good	Limit	Level gauge is normal.
5/23/2013 8:08 PM	Level Gauge	750	LO/LO	Good	Limit	Compressor gauge is reading normal
5/23/2013 8:07 PM	Compressor	700	LO	Good	Limit	Core Humidity is normal.
5/23/2013 8:18 PM	Humidity	850	LO/LO	Good	Limit	Ball3 on the Box Line is slow
5/23/2013 8:22 PM	Pressure	100	LO	Good	Limit	The PSI in Tank1 is low
5/23/2013 8:58 PM	Pressure	100	LO	Good	Limit	The PSI in Tank1 is low
5/23/2013 8:00 PM	Temperature	100	High	Good	Limit	Level gauge is low.
5/23/2013 6:11 PM	Belt Speed	100	High	Good	Limit	Arm Torque is at acceptable level.

- Visualize the alarm information list with eye-catching colors
- Quickly confirm an error

AlarmWorX™

▶ Alarm visualization

Drive process improvements with actionable information

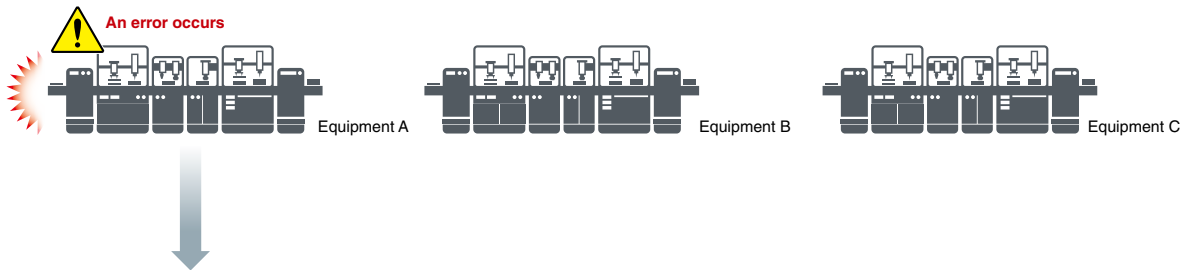
Case 03

Get access to relevant information when and where it is needed

Solution

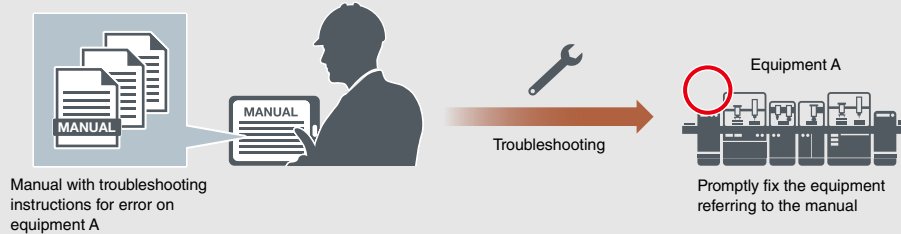
Prompt troubleshooting of equipment with various functions such as related manual display and remote instruction utilizing AR

- Remote instructions via voice and images
- Access equipment manuals in conjunction with error details
- Check troubleshooting instructions on a wearable device in real-time



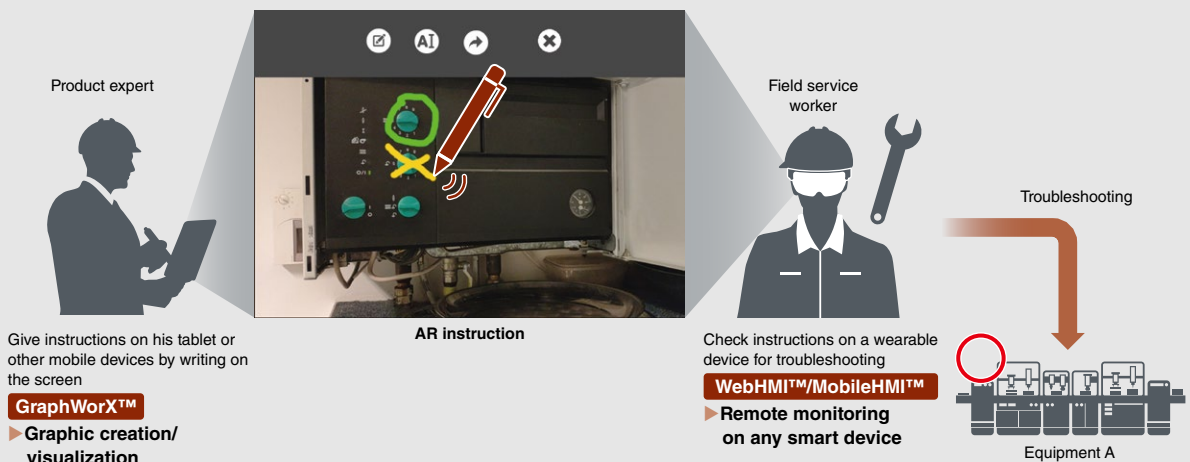
Example 1

Access manuals to identify equipment error codes. A field service worker can quickly check the manual on a computer, tablet, or smartphone.



Example 2

A product expert can provide instructions on his tablet or any other mobile device by directly writing on the screen. A field service worker can troubleshoot equipment by checking instructions of AR display on a wearable device.



Case 04

Require prompt troubleshooting support when equipment fails

Solution

Upon equipment downtime, assign the field service worker closest to the target factory using built-in location services*1

- Detect facility and equipment errors and manage alarm information
- Provide push notifications to field service worker's mobile phones for quick response times and fast troubleshooting



Factory A

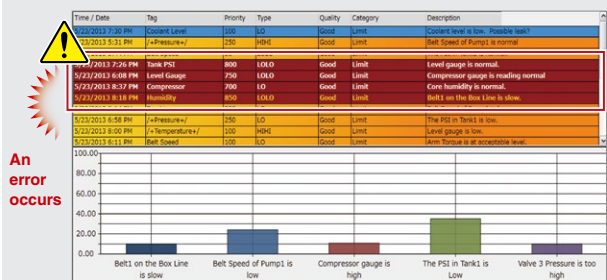


Factory B



Factory C

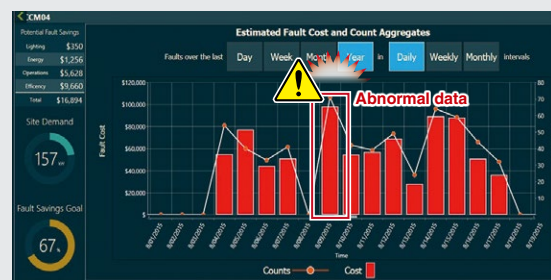
Visualize information from factory B The status of target equipment can be identified through alarm information and trend graphs



An error occurs

Alarm information

AlarmWorX™ ▶ Alarm visualization



Trend graph

TrendWorX™ ▶ Real-time and historical trends

Check field service location from a remote location

CFSWorX™ ▶ Monitoring of field service workers and maintenance personnel **Option**



Find an error from data

*1. GENESIS64™ provides a monitoring of field service workers and maintenance personnel function. However, Mitsubishi Electric does not provide maintenance service utilizing this function.

Identify and address root cause issues

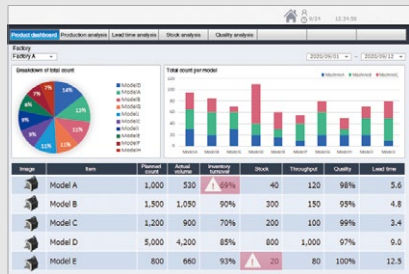
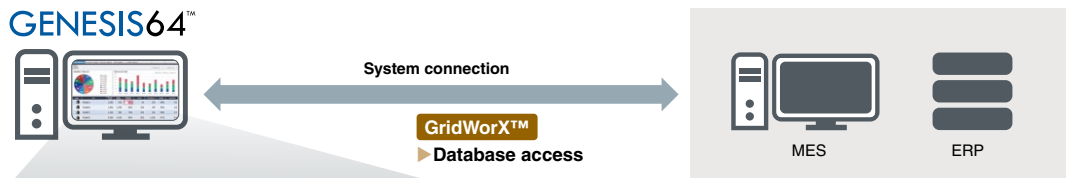
Case 05

Improve productivity through IT and OT integration

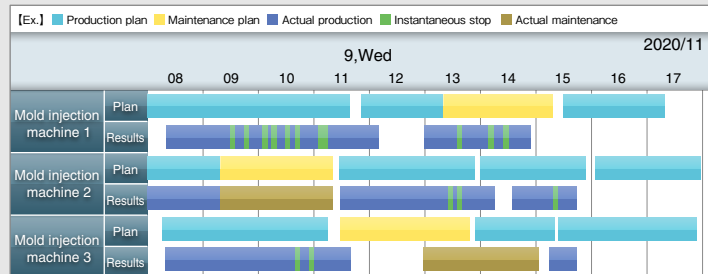
Solution

Integrate with enterprise systems to improve productivity through unified monitoring, control and analysis of production data

- Analyze system data through integrated IT and OT systems
- Transform production data into actionable information



Visualize production information as a graph and table



Production progress is easily understood on Gant Chart



Turn data into information to improve production and equipment performance



Production line

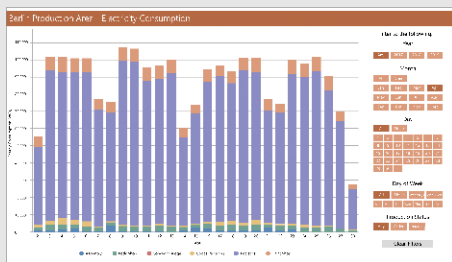
Case 06

Optimize system operation by analyzing accumulated data

Solution

Various analysis functions using historical data help identify energy offenders and allow for quick troubleshooting

- Preventive maintenance by analyzing equipment operational status
- Visualization and analysis of energy consumption realizes energy saving
- Improve product quality by visualizing process control limits

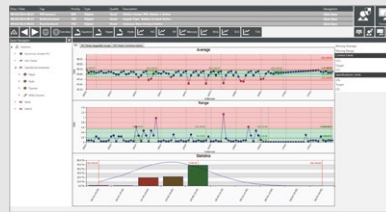


Energy consumption charts identifying saving opportunities

Energy AnalytiX®

► Visualization and analysis of energy consumption

Option



Quality management of production line using control chart

Quality AnalytiX®

► Quality control

Option



Visualize equipment operational status on one screen

GraphWorX™

► Graphic creation/ visualization

Analyze collected data



Get actionable information for preventive maintenance from the analysis results

GENESIS64™

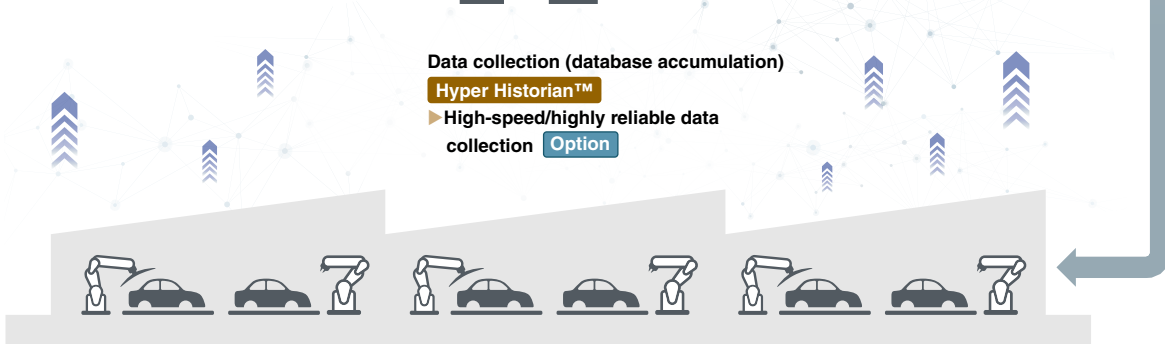


Data collection (database accumulation)

Hyper Historian™

► High-speed/highly reliable data collection

Option



Production line

Operator role

Engineer role

Executive role

System integrator role

Functions

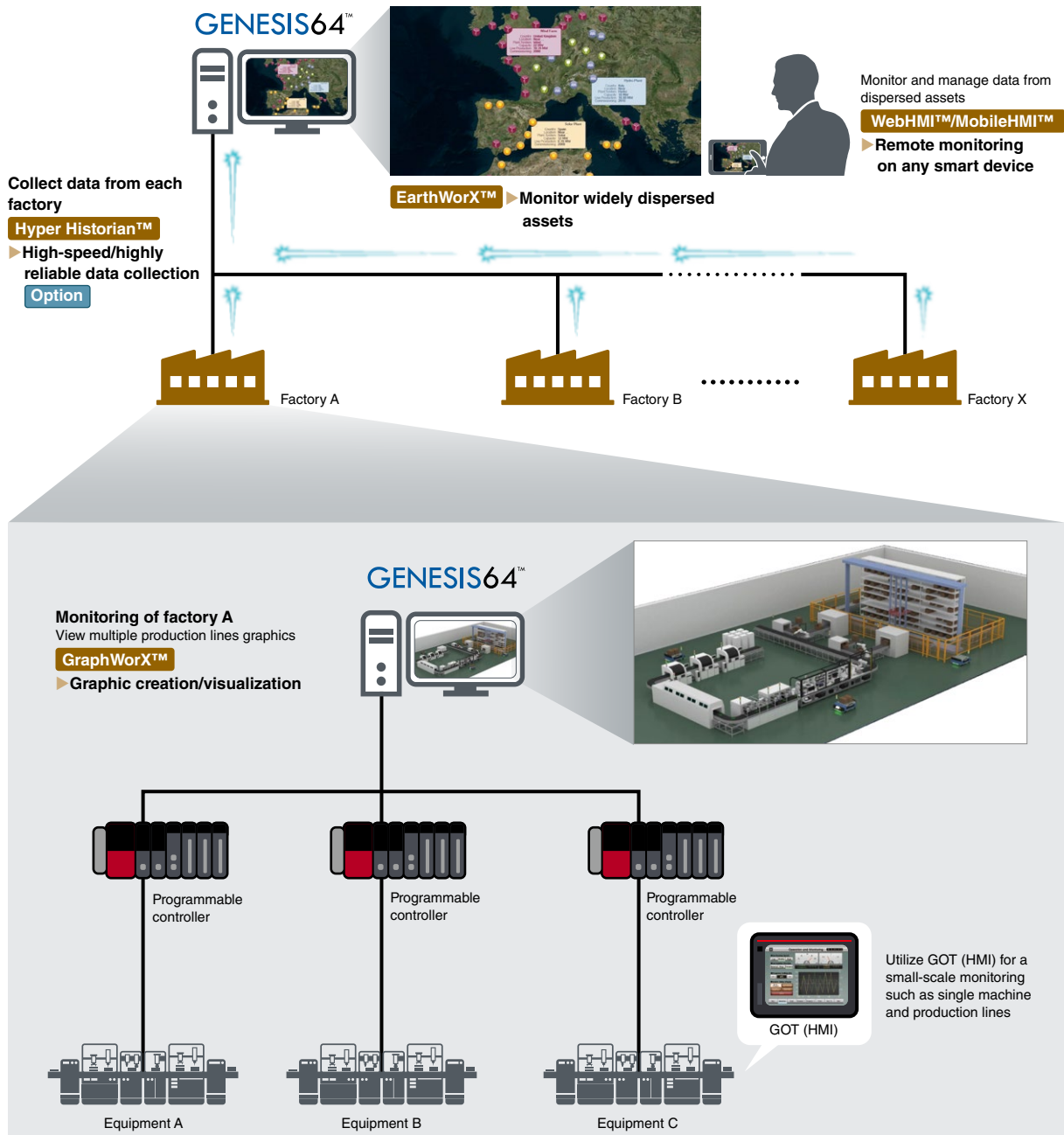
Case 07

Multi-site production management

Solution

Quickly compare the performance of multiple sites through real-time visualization of geographically disparate systems

- Unified production site data management
- Realize standardized operations through monitoring and management of multiple assets



Configure highly reliable systems

Case 08

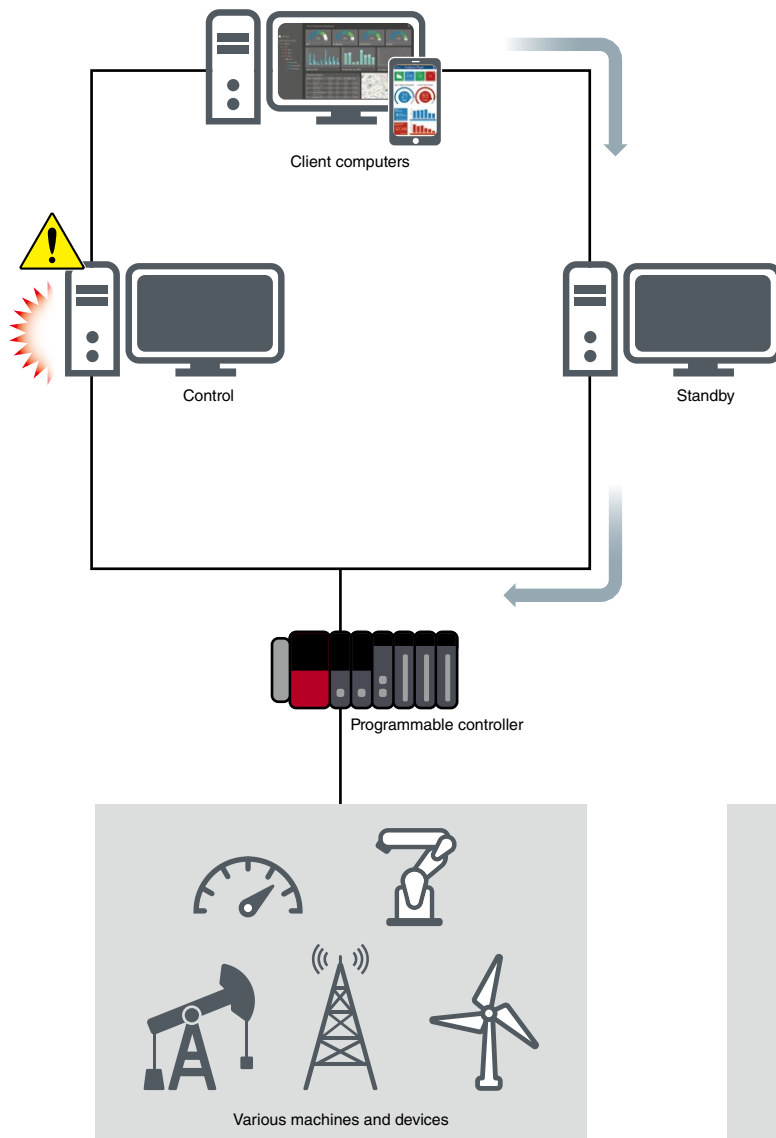
Ensure system uptime through high availability deployment options

Solution

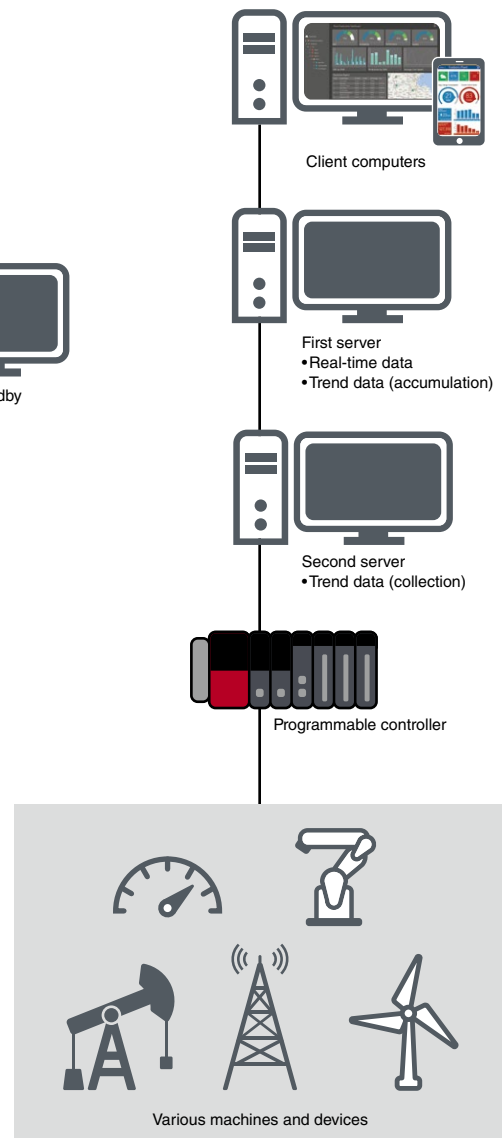
Provide stable operations by applying mission critical system architectures

- Redundant servers ensure continuous operation even when an error occurs
- Prevent overload of servers with distributed processing by multiple servers

Redundant server configuration



Distributed server configuration



Operator role

Engineer role

Executive role

System Integrator role

Functions

Gain critical insight into your operations with KPIs and analytics

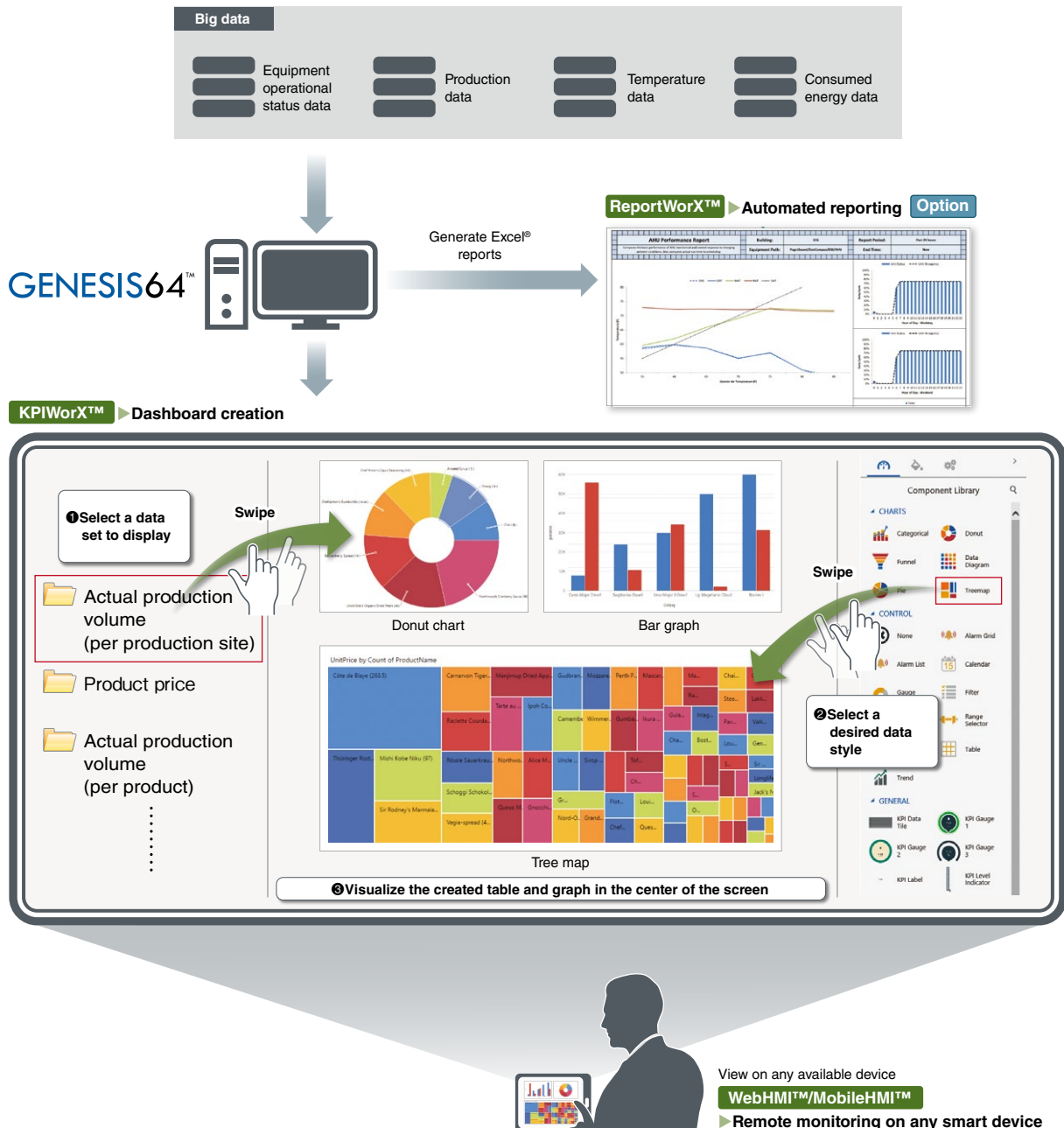
Case 09

Turn large amounts of data into actionable information to improve business operations

Solution

Extract large volumes of data and visualize in easy self-service dashboards

- High-speed and large capacity data collection
- Create templates by combining various graphical objects and data styles
- Create self-service dashboards (drag and drop) on any mobile device



Manage global deployments across the enterprise

Case 10

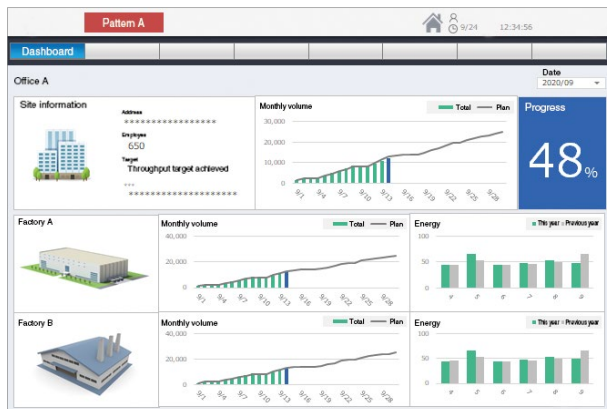
Monitor sites worldwide in real-time to shorten improvement cycles

Solution

Integrate and collect data from widely dispersed assets in the cloud

- Utilize the cloud for secure data collection and system monitoring
- Unified management of data from different production sites
- Remote monitoring and control via web browsers and mobile applications

Centrally manage all production sites data in one server



GraphWorX™

► Graphic creation/visualization



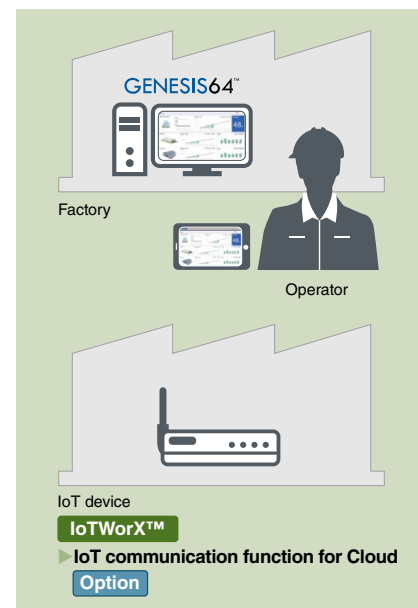
Executive

Check the monitoring screen on a web browser and mobile application

WebHMI™/MobileHMI™

► Remote monitoring on any smart device

Send feedback about insights from the data to the field



Operator role

Engineer role

Executive role

System Integrator role

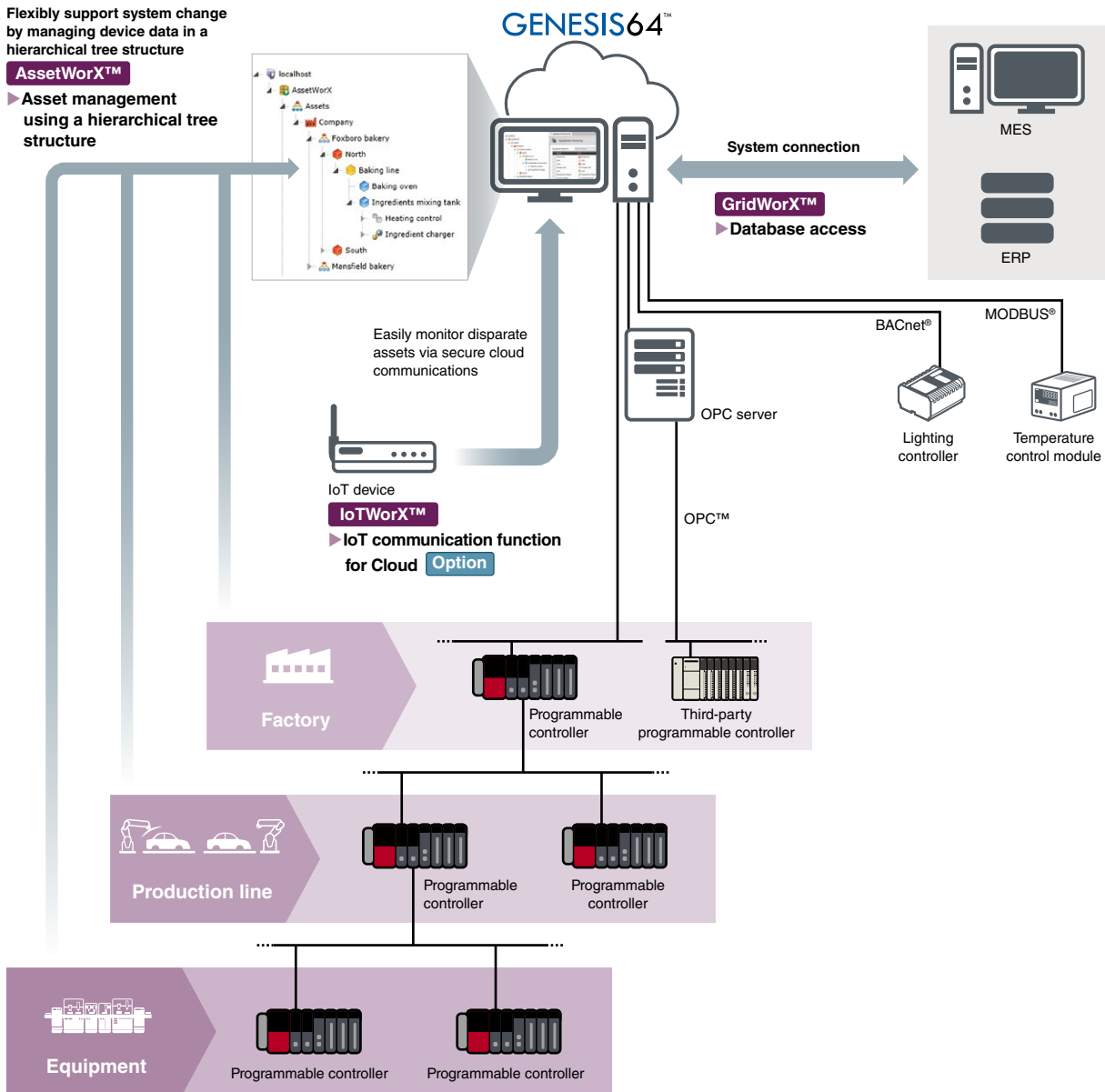
Functions

Custom solutions to develop value-added services

Case 11 **Connect with a wide variety of devices and systems**

Solution

- Supports popular open protocols such as OPC™, EtherNet/IP™, BACnet®, and MODBUS®
- Deliver shop floor data to MES, ERP, and work order management systems
- Flexible system configuration by managing device data in a hierarchical tree structure
- Enables enterprise data monitoring and control via the cloud



Reduce engineering time

Case 12

Efficiently develop systems that solve complex customer needs

Solution

Boost software scalability and rapidly deliver innovative capabilities with time-saving development tools

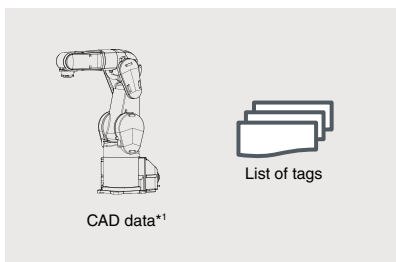
- Reduce display creation time by importing CAD drawings of graphical assets
- Develop reusable equipment and asset templates to rapidly deploy across your enterprise
- Exchange information with external databases using powerful workflow technology
- Simplify screen development using point-and-click tools; no scripting required



Easily create intuitive operator displays
User-friendly screens in high-definition can be created with 2D and 3D graphics and various symbols
GraphWorX™ ▶ Graphic creation/visualization



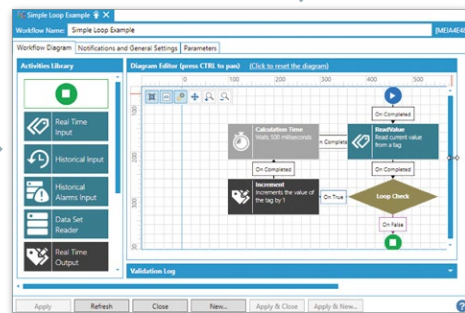
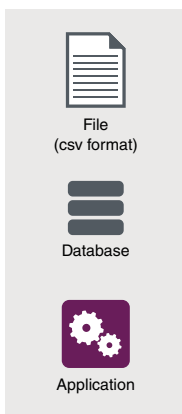
Monitor operating status
Visualize data collected at high speed in charts, trends, or reports to easily identify patterns or abnormalities
TrendWorX™ ▶ Real-time and historical trends
ReportWorX™ ▶ Automated reporting **Option**



GENESIS64™

Quickly configure alarms, historical data logging, assets, and more from any workstation
Workbench
▶ Centralized project management

Create monitoring displays with dynamic properties, animations, and flexible aliasing
GraphWorX™
▶ Graphic creation/visualization



Customized applications can be executed (or read/write) through Workflow from GENESIS64™
Workflow ▶ Programming by flowchart



Remotely monitor and control
Remote monitoring function enables access from mobile devices such as smartphones and tablets (voice command control is also supported)
WebHMI™/MobileHMI™
▶ Remote monitoring on any smart device

*1. Following CAD formats are supported.
3D format: XAML (.xaml), COLLADA™ (.dae), 3D Studio (.3ds), Wavefront (.obj), Autodesk® (.dwg/.dxf), Green Building XML (.gbXML)
2D format: XAML (.xaml), Windows® Metafiles (.wmf/.emf), Scalable Vector Graphics (.svg), Autodesk® (.dwg/.dxf)

Operator role

Engineer role

Executive role

System Integrator role

Functions

GraphWorX™

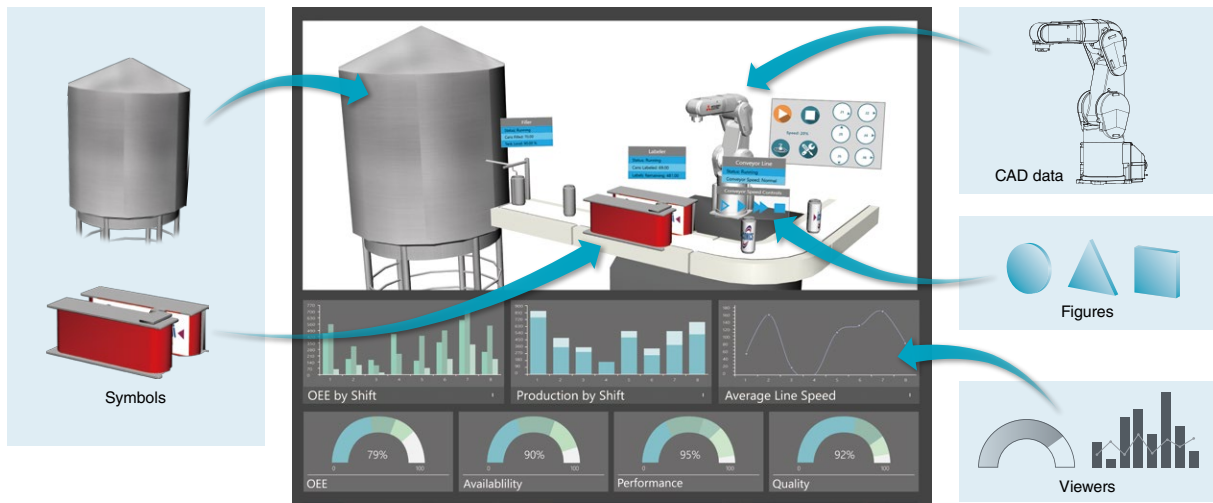
■ Graphic creation/visualization

Stunning and user-friendly graphics can be created at a low cost using provided 2D, 3D*1 symbols and CAD data. Various displays according to applications are available, such as automatically changing displayed information according to magnification and reduction percentage and showing the entire system realistically using 3D models*1.

*1. GENESIS64™ Basic SCADA does not support 3D.

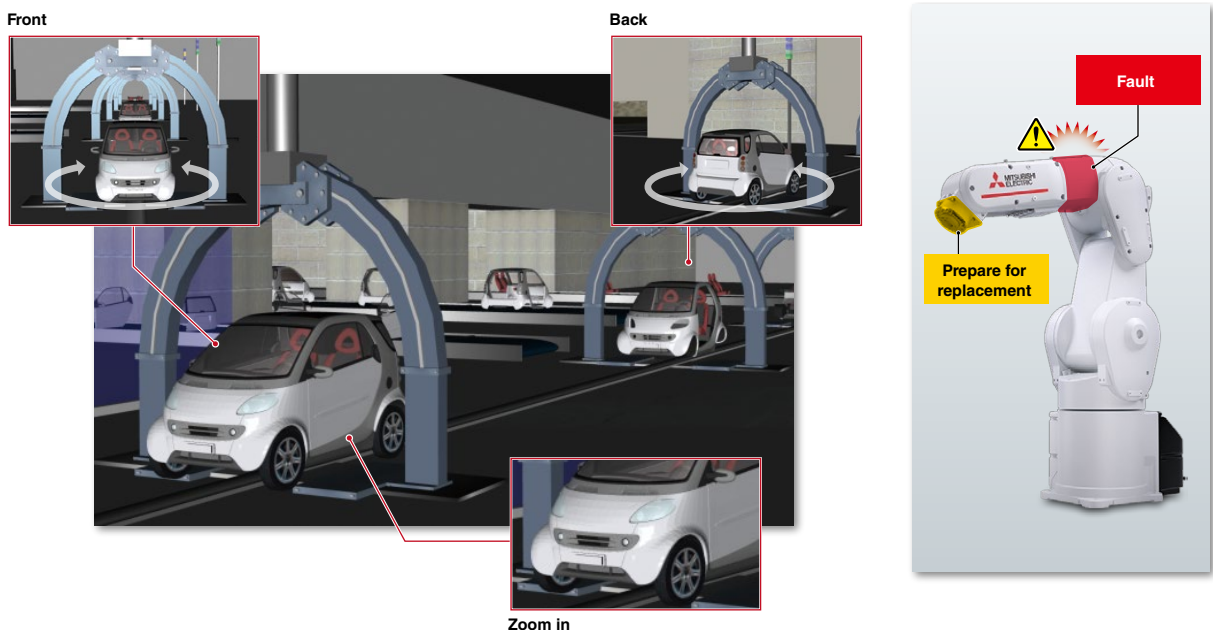
▶ Graphic creation

Easily create graphics using various symbols, figures, and viewers provided and customer's CAD data.



▶ Graphic visualization

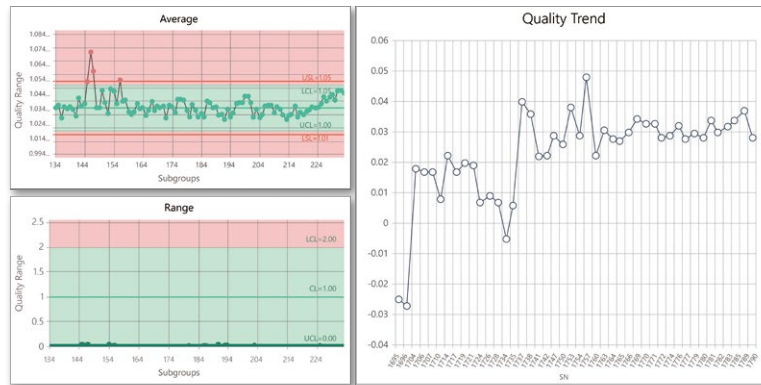
Angle change and zooming of created graphics are possible. In addition, color can be added to visualize the status intuitively.



TrendWorX™

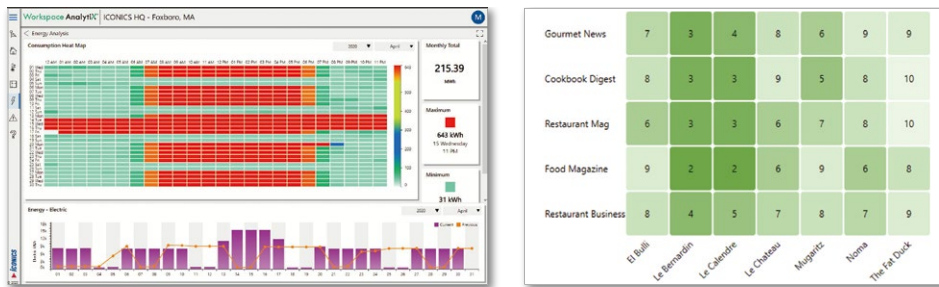
Real-time and historical trends

Visualize enterprise-wide data in trends, logs, charts, and reports with TrendWorX™. Chart real-time and historical data from any database to provide users with actionable data. Customize replay rates, colors, axis scales, and multiple cursors. Interact with trends during operation with multiple playback and filtering functions.



Data can be color-coded as a heat map*1 to make data easily visible, allowing quick analysis.

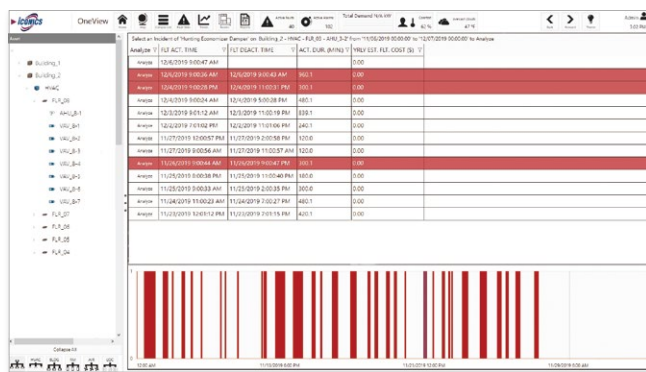
*1. Days and times when alarms most frequently occur and such can be easily understood by colors that change based on threshold values.



AlarmWorX™/AlertWorX™

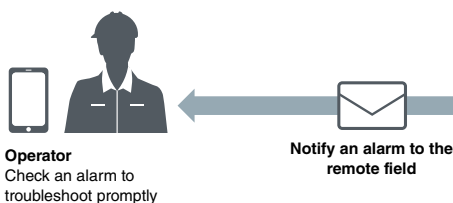
Alarm visualization/notification

Notify your personnel of abnormal conditions and events in real time with ANSI/ISA-18.2 compliant features. Integrate the AlarmWorX™ Viewer into any SCADA or HMI display to bring to light real-time and historical alarms when and where operators need to see them.



	Present	Active	Acked
area A	43	10	2
factory A	3	0	0
factory B	0	0	0
factory C	1	0	0
factory D	1	0	0
factory E	11	2	1
factory F	5	0	0
factory G	10	7	0
factory line A	3	1	0

Visualize alarms according to the equipment and factory line configuration created with AssetWorX™



Operator role

Engineer role

Executive role

System integrator role

Functions

WebHMI™/MobileHMI™

■ Remote monitoring on any smart device

Bring SCADA visualization to any device. Create displays on the desktop that can responsively scale to run on any mobile client. Leverage native apps to provide a consistent user experience on any smartphone, tablet, or HTML5 compliant web browser*1. GENESIS64™ responsive UI technology flawlessly transitions between clients to provide a consistent user experience*2.

*1. Please refer to the operating environment on page 44 for supported web browsers.

*2. Please refer to "2. Select client products" on page 35 flow of product selection for details.

WebHMI™

Search URL of server computer on a web browser

Visualize monitoring screen on a web browser

MobileHMI™

Download MobileHMI™ application to device

Check monitoring screen from MobileHMI™ application

Intuitive operation is possible on a tablet and smartphone

Swipe Pinch in Pinch out

EarthWorX™

■ Monitor widely dispersed assets

EarthWorX™, a geographic information system (GIS) mapping module, provides visualization for widely dispersed assets. Create a geographical overview to monitor multiple locations while maintaining the ability to locate and drill into specific assets. Smart Pin™ enables the status of many assets to be easily understood at a glance. Users can integrate with Google Maps™, Bing® Maps, and Esri™ to include additional GIS mapping features and data layers.

Alarm

Production progress

Energy usage condition

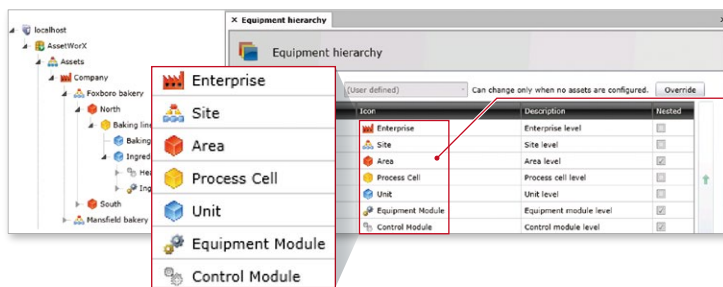
Smart Pin™

AssetWorX™

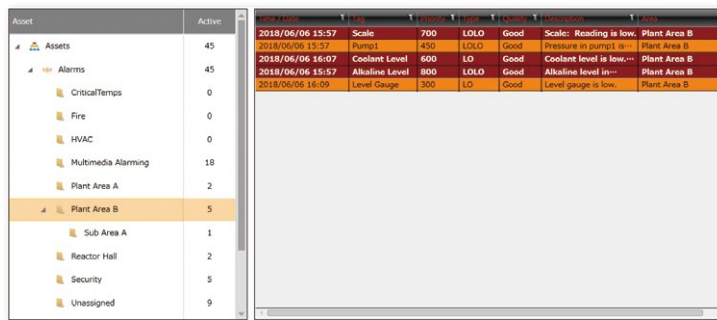
■ Asset management using a hierarchical tree structure

AssetWorX™ is an international standard ANSI/ISA-95*1 compliant asset management module. Map the physical world to its digital twin according to the actual structure of the enterprise, company, process, factory, line, etc. Assets can be organized and configured in the Workbench, optionally including alarms, customizable colors, icons, and drag-and-drop functionalities. The runtime component provides intuitive navigation and is perfectly suited for scaling large projects, which can be easily achieved using the Excel® based bulk asset configuration.*2

*1. International standard which defines equipment hierarchy models for physical assets in manufacturing.
 *2. This is not included in GENESIS64™ Basic SCADA.



Icons representing each level make it easy to access each data



AssetWorX™ further enhances visualization of alarms and trends on each level when combined with other functions such as AlarmWorX™ and TrendWorX™

GridWorX™

■ Database access

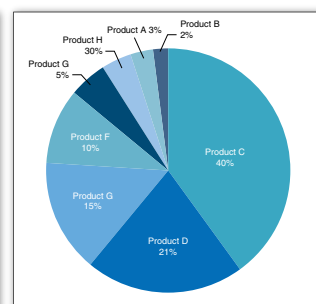
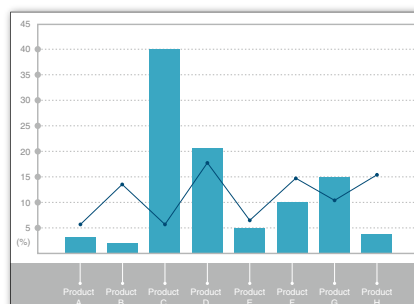
GridWorX™ processes values retrieved from third-party databases such as Microsoft® SQL Server®, Oracle®, and ODBC, and displays values as tables and charts. Easily integrate with MES, ERP, work order systems, and other business applications, enabling detection and early identification of system issues.

- Microsoft® SQL Server®
- Oracle®
- ODBC



Visualize

No.	Product name	Production site	Starting date	Updated date	Cumulative sum
1	Product A	Area A	20/03/25	20/05/06	102
2	Product B	Area B	20/01/15	20/07/14	100
3	Product C	Area C	20/10/30	20/01/23	305
4	Product D	Area D	20/02/22	20/09/06	256
5	Product E	Area E	20/04/10	20/02/14	463
6	Product F	Area F	20/06/05	20/11/23	110



Operator role

Engineer role

Executive role

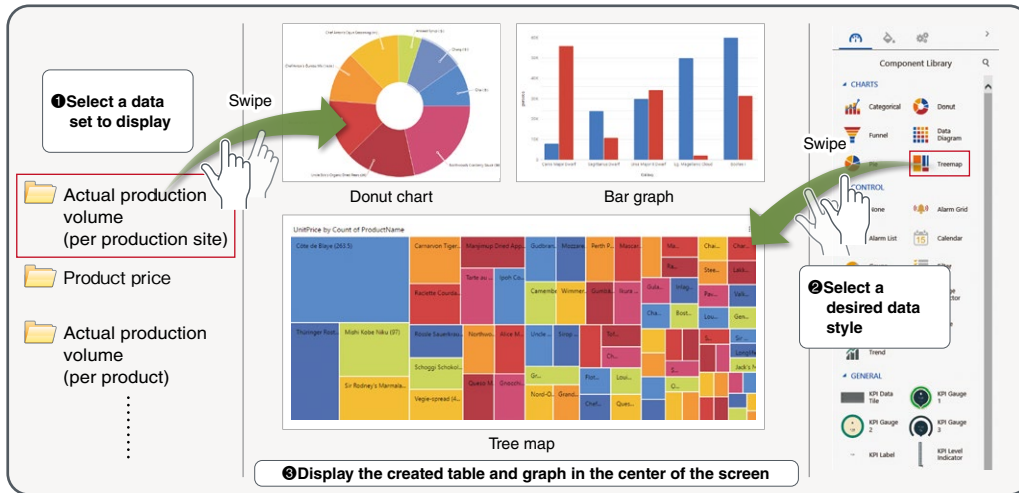
System integrator role

Functions

KPIWorX™

■ Dashboard creation

KPIWorX™ is an application for delivering self-service executive dashboards to any desktop or mobile device, utilizing preconfigured widgets and symbols such as meters, alarms, trends, and charts for business intelligence. Get timely KPI and OEE information on any smartphone or tablet computer, or on your wrist with Apple Watch® support. Executives can quickly view insightful charts and analytics information for more proactive decision making.



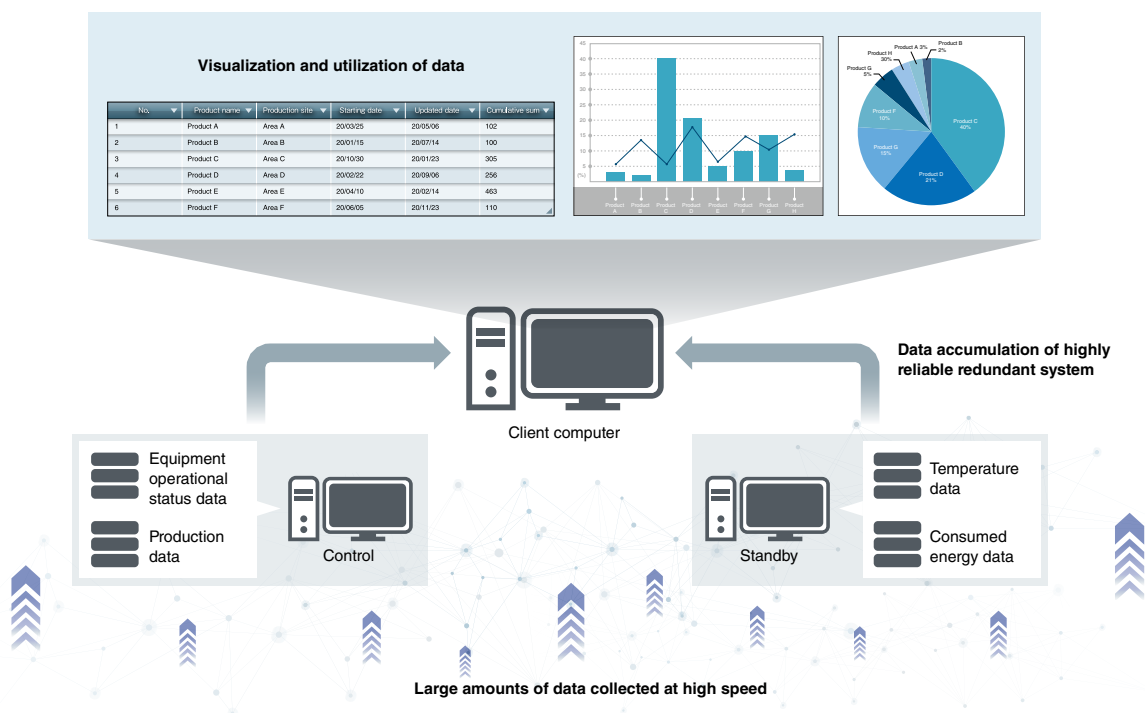
Hyper Historian™*1 Option

■ High-speed/highly reliable data collection

Hyper Historian™ is a high-speed*2, reliable, and robust historian. Designed for the most demanding applications with support for redundancy and distributed data collection, Hyper Historian™'s advanced high compression algorithm delivers unparalleled performance with efficient use of resources. It integrates with the latest big data technologies, including Azure® SQL, Azure® Data Lake, Apache Kafka®, and Apache Hadoop®. This makes Hyper Historian™ the most efficient and secure real-time plant historian for the latest Microsoft® operating systems.

*1. Hyper Historian™ Express (simplified ver.) is included in GENESIS64™. Please refer to the function list (Hyper Historian™ product) on page 35 for details.

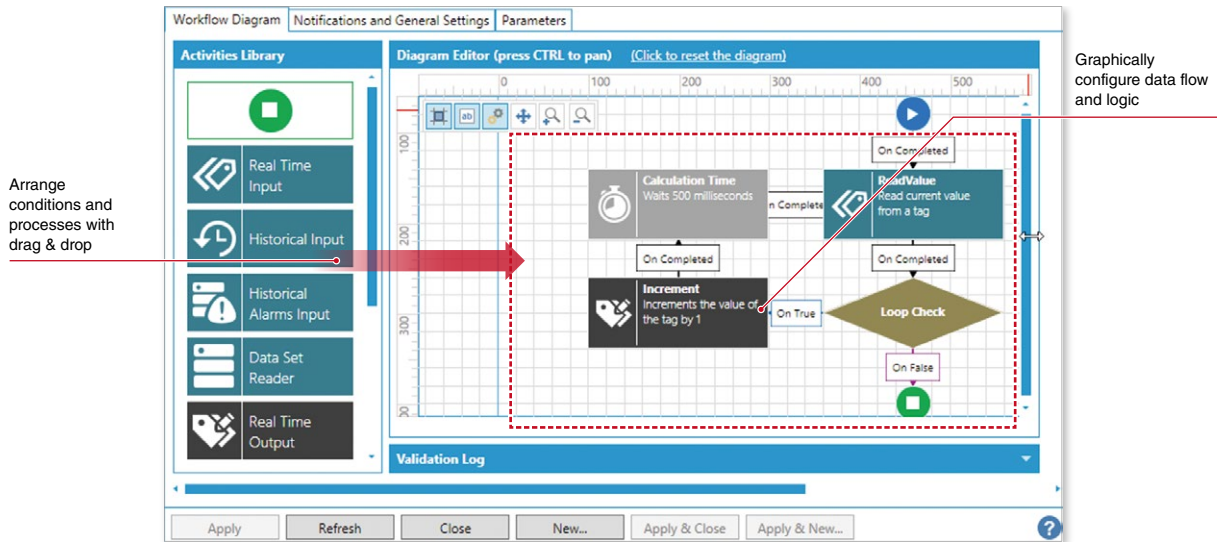
*2. The speed depends on the system configuration.



Workflow

■ Programming by flowchart

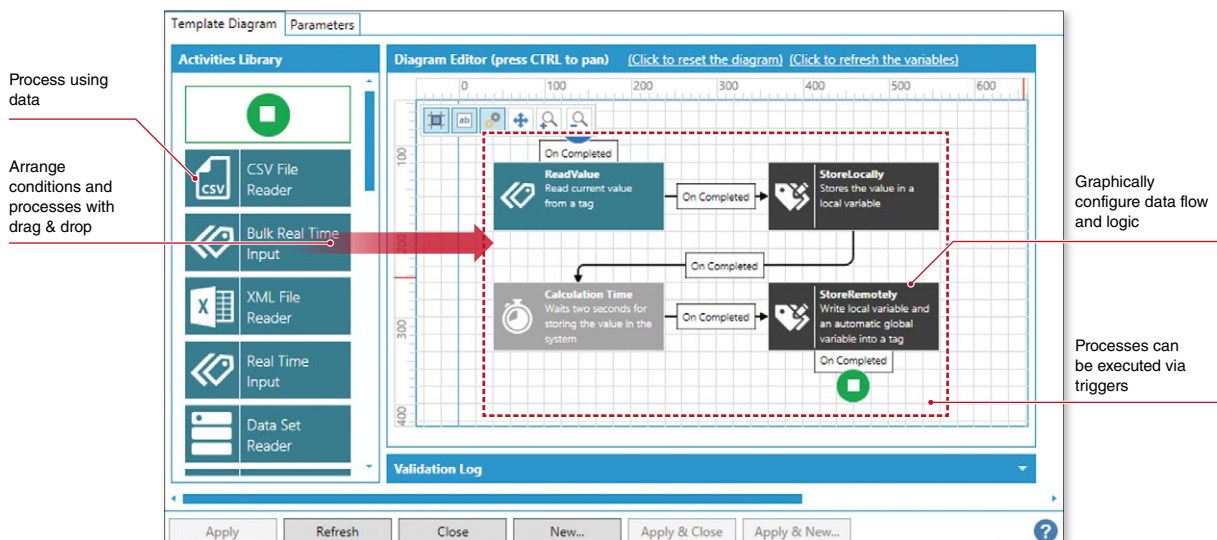
Workflow is continuous processing based on data such as real-time or historical data values, alarm notifications, faults, and more. It can be graphically configured and executed using a flowchart built from a library of highly-customizable activities.



BridgeWorX™ Option

■ Transaction-based processing by flowchart

BridgeWorX™ enables configuration and execution of transactions built on the powerful Workflow engine. Graphical data bridging enables users to rapidly implement data orchestration and integration tasks that adhere to business logic without requiring programming. BridgeWorX™ can access Microsoft® SQL Server®, Oracle®, Microsoft® Access®, SAP®, and virtually any real-time or archived manufacturing or business data source.



Comparison between Workflow and BridgeWorX™

	Workflow	BridgeWorX™
Processable data	Data on GENESIS64™	Data on GENESIS64™ Data/file/web service
Execution format	Cycle	Cycle, trigger

Operator role

Engineer role

Executive role

System Integrator role

Functions

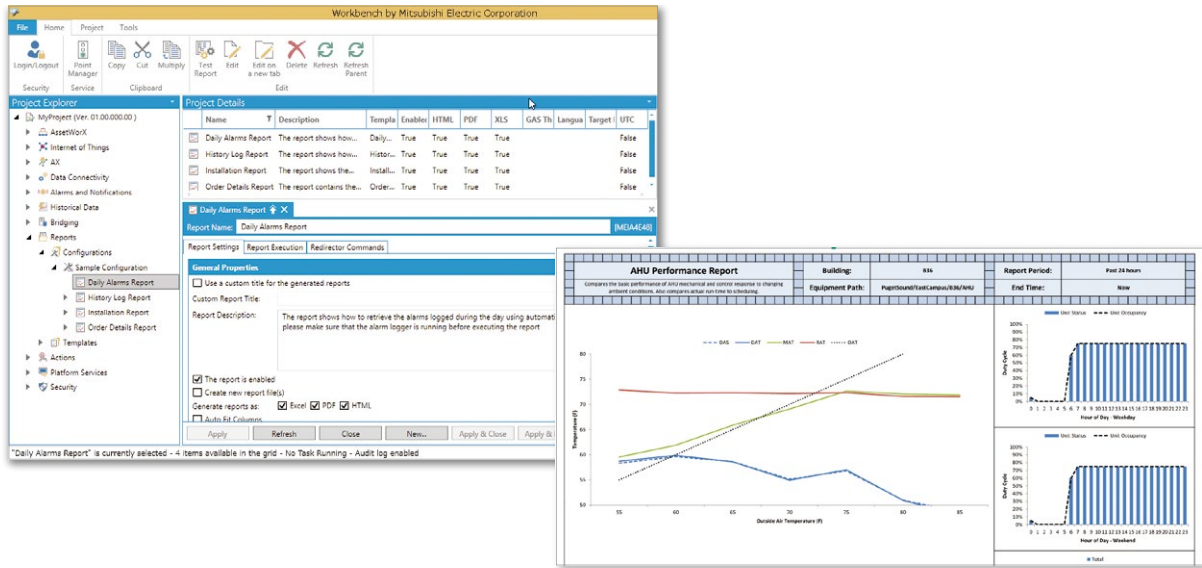
ReportWorX™*1 Option

■ Automated reporting

ReportWorX™ is a powerful reporting tool that turns volumes of data into manufacturing intelligence. Create reports in Excel®, HTML, or PDF format with data from the plant floor, corporate databases, and everywhere in between.*2 Its advanced scheduling engine delivers reports automatically via the web, from an HMI screen, or based on user-specified criteria. Scheduling options include daily, weekly, monthly, and yearly, or based on a variety of triggers.

*1. ReportWorX™ Express (simplified ver.) is included in GENESIS64™. Please refer to the function list (A server product) on page 34 for details.

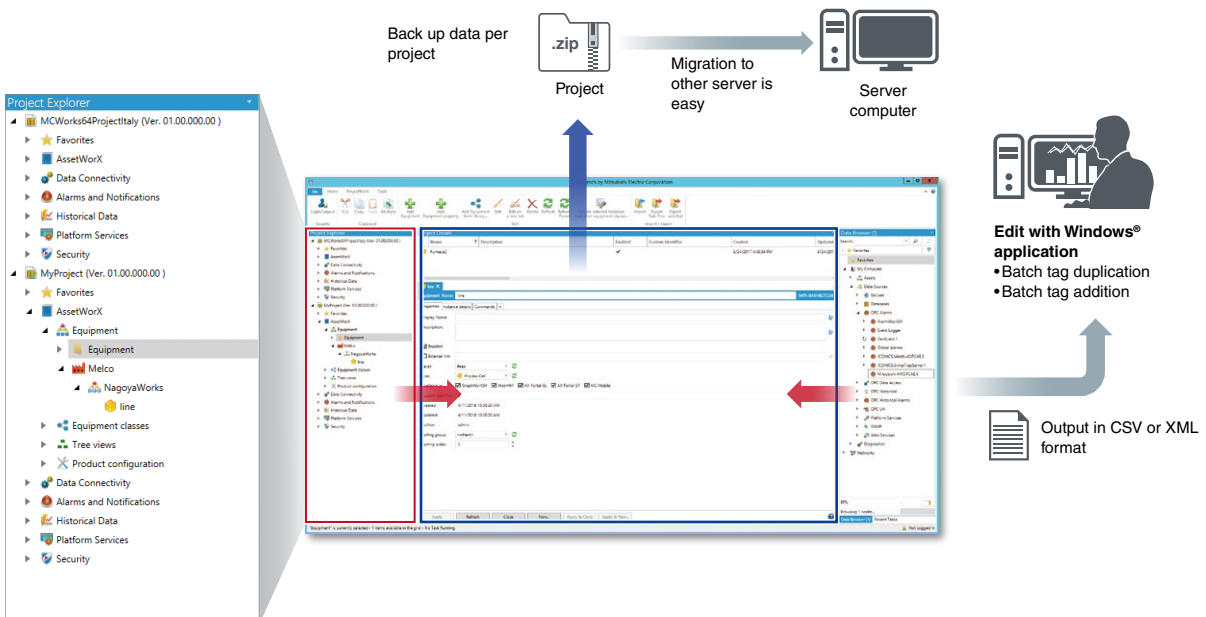
*2. Original templates are created in Excel®.



Workbench

■ Centralized project management

Workbench is the multi-functional, centralized project management tool and configuration environment for all GENESIS64™ server applications, making development more efficient and minimizing design time for any application. Configure assets and historical logging from the same screen. Users can configure and manage their entire GENESIS64™ application from any workstation.



Project tree
Development by intuitive operation with drag & drop

Energy AnalytiX® Option

■ Visualization and analysis of energy consumption

Energy AnalytiX® provides real-time data collection and visualization of energy consumption such as electric, gas, and other utilities. It enables the calculation of specific CO₂ emissions data and other energy metrics at any level of your organizational hierarchy, making it easy to uncover energy efficiency offenders and reduce overall energy costs.



Quality AnalytiX® Option

■ Quality control

Quality AnalytiX® enables operators, quality personnel, manufacturing engineers, and executives to view SPC*1 and quality data, along with other production parameters impacting product quality. Apply any of the extensive set of built-in calculations to any process variable to drive corrective actions based on process trends.

*1. Statistical Process Control



Operator role

Engineer role

Executive role

System integrator role

Functions

Facility AnalytiX® Option

■ Advanced fault detection and diagnostics (FDD) technology

Facility AnalytiX® incorporates customizable fault rules to predict faults and failures, weigh the probability of equipment failure, and advise personnel of immediate preventive actions that can be taken, improving safety and optimizing energy savings. An extensive library of standard HVAC*1 and process equipment diagnostic models minimizes configuration, while a rules editor enables intuitive customization and equipment diagnostic modeling.

*1. HVAC: Heating, Ventilation, and Air Conditioning

► Customizable fault definitions (rules) with algorithms to determine probable causes

Equipment data

Specifications

Weather information

Trend graph

Know-how

No.	Product name	Production area	Starting date	Updated date	Consumable life
1	Product A	Area A	200505	200505	102
2	Product B	Area B	200115	200714	100
3	Product C	Area C	201030	200103	305
4	Product D	Area D	200202	200908	205
5	Product E	Area E	200410	200214	453
6	Product F	Area F	200605	201103	110

Production data

Drag a column header and drop it here to group by that column

Photo	Name	Date/Time	Fault	Area
	JCI VAV Model: 2514A	10/25/2010 11:26 AM	Efficiency less than 80%	BR.BR1.Floor1

Details Causes Performance Chart

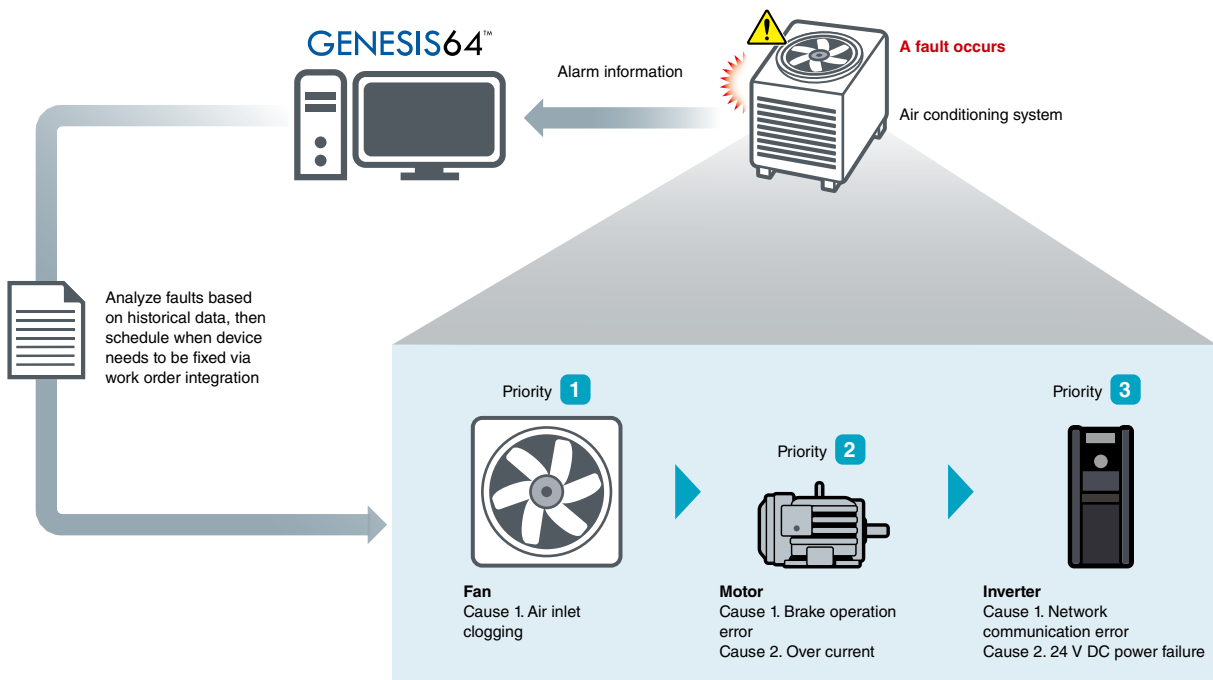
Possible Causes

- Tuning problem with airflow feedback controller loop
- Zone temperature sensor drift/failure
- Supply air static pressure too low
- Scheduling conflict with AHU
- Minimum airflow setpoint too high
- Inappropriate zone temperature setpoint
- AHU supply air too cool
- Damper actuator stuck or failed
- Tuning problem with zone temperature feedback control loop
- Maximum airflow setpoint too low
- Discharge temperature sensor drift/failure

Photo	Name	Date/Time	Fault	Area
	JCI VAV Model: 2514A	10/25/2010 7:09 PM	Air flow VS fan speed ratio less than 10%	BR.BR1.Floor5

Check alarms received from equipment and visualize fault causes in order of probability for troubleshooting

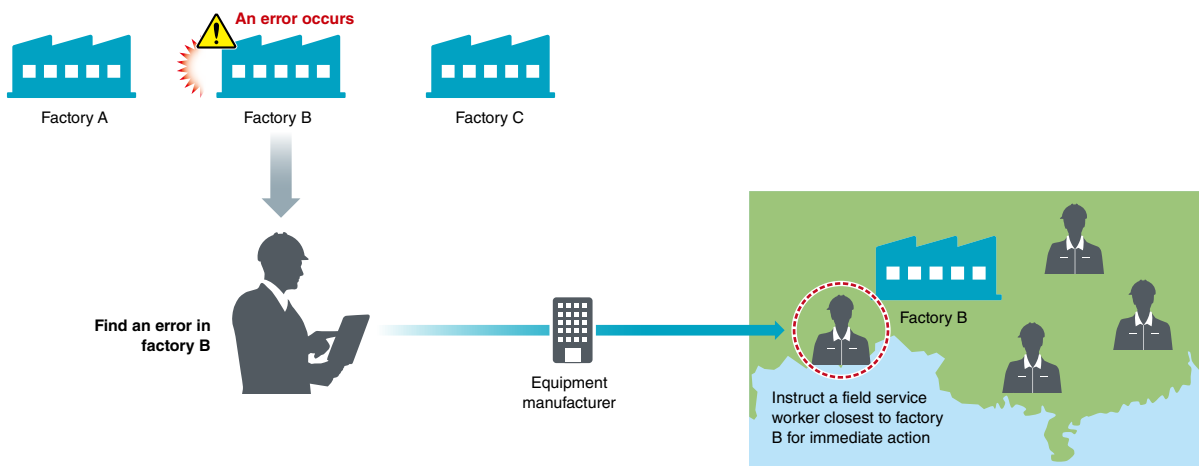
► Application example: Detect a fan speed abnormality of air conditioning system



CFSWorX™ Option

■ Monitoring of field service workers and maintenance personnel

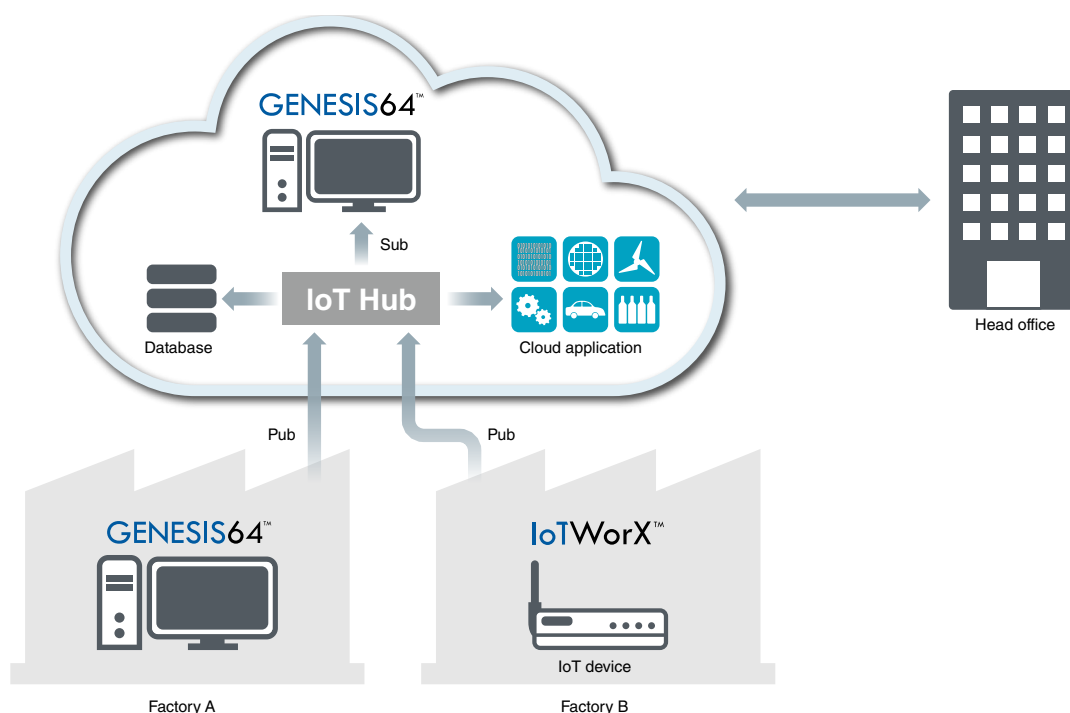
CFSWorX™ is useful for monitoring of field service workers from a central location. It determines which worker is best for the maintenance task according to location, schedule, availability, and skill level. CFSWorX™ can even instantly connect remote workers to subject matter experts via its video expert capability.



IoTWorX™ Option

■ IoT communication function for Cloud

IoTWorX™ combines cutting-edge micro SCADA software technology with integrated SCADA, analytics, and mobile solutions running in the cloud. It includes open connectivity to assets, secure cloud communications, and built-in real-time visualization and analytics.



Operator role

Engineer role

Executive role

System Integrator role

Functions

Open connectivity

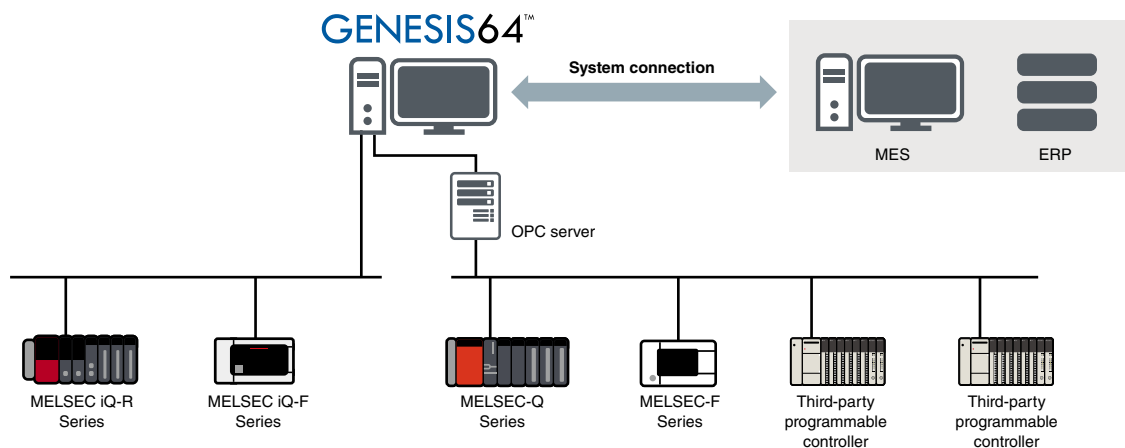
GENESIS64™ supports industry standard communications such as OPC™, OPC UA, MODBUS®, BACnet®, MQTT, web services, and various databases such as SQL Database, Oracle®, and ODBC can be directly connected without an OPC server. Simple device discovery on the network makes integration seamless and efficient. The Mitsubishi Electric Factory Automation (FA) Connector supports MELSEC iQ-R and iQ-F Series. Other devices that do not require an OPC server will be added in the future.

■ Mitsubishi Electric controllers supported by GENESIS64™

Model	Connection path				Remarks
	USB	Serial	Ethernet	CC-Link IE Control	
MELSEC iQ-R Series CPU	●	●	●	●	R□CPU, R□ENCPU, R□SFPCPU, R□PCPU, and R□PSFPCPU are supported.
MELSEC iQ-F Series CPU	●	●	●	-	FX5CPU is supported. (FX5UCCPU does not support USB and serial expansion board.)

■ Various protocols are supported

Various protocols such as OPC UA, EtherNet/IP™, BACnet®, MODBUS® are supported, allowing configuration of a monitoring system connected with various production lines, equipment, and devices.



For the supported networks, please refer to "Connection to devices/external services" of the function list (A server product) on page 34.

■ Recommended OPC server Option

Device explorer OPC server for GENESIS64™

Communication software supporting programmable controller CPU, C Controller, motion CPU, and GOT (HMI). Data retrieval via networks such as Ethernet and CC-Link and data communication through OPC DA, OPC UA, and OPC UA Pub/Sub are supported.

[Supported models]

MELSEC programmable controller, GOT (HMI) and other Mitsubishi Electric products

[Supported networks]

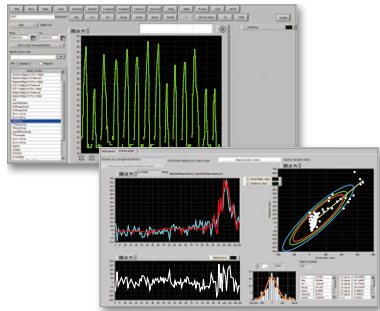
Ethernet, serial, CC-Link, CC-Link IE, MELSECNET/H

[Supported areas]

Asia, Europe, North America, Latin America, Africa

Edgecross compatible

GENESIS64™ operates on Edgecross compatible industrial computer such as MELIPC MI5000. Utilizing Edgecross applications, production data collection and analysis are possible.



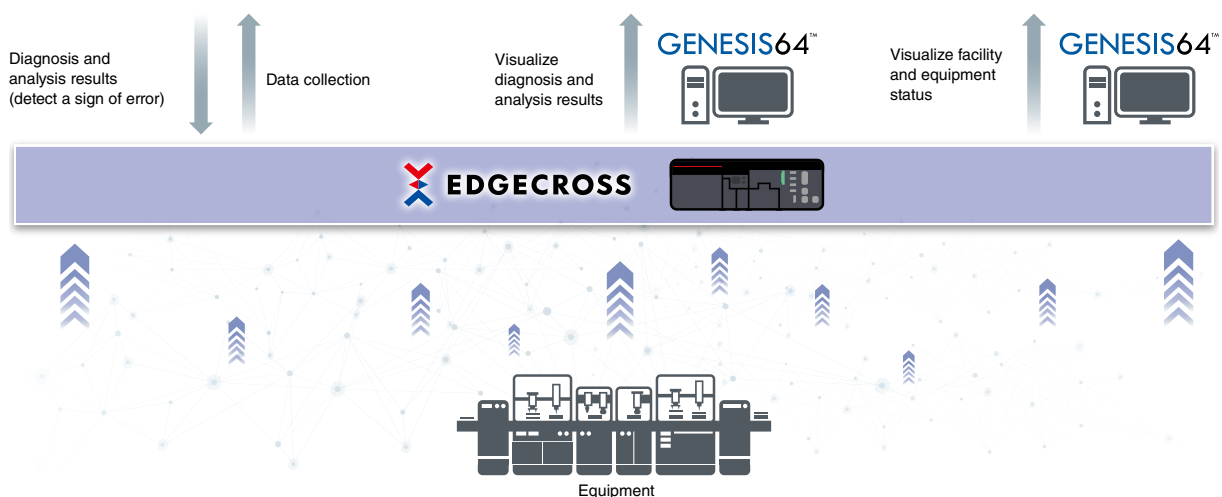
Edgecross application (Real-time Data Analyzer)
One software enables real-time diagnosis and offline analysis of production data



GENESIS64™
Visualize facility and equipment where a sign of error is detected, allowing maintenance before it happens.



GENESIS64™
Visualize facility and equipment status and KPI information sent from Edgecross.



Global standard compliance

■ Configure ANSI/ISA-18.2 compliant projects

AlarmWorX™ provides functions to comply with ANSI/ISA-18.2, a standard for management of alarm systems. GENESIS64™ helps promote global compatibility of customer's systems through compliance with internationally mainstream alarm system.

■ Configure ANSI/ASHRAE Standard 135-2008 compliant projects

BACnet® connection function used for Building Automation system is provided. GENESIS64™ enables connection complying with ANSI/ASHRAE Standard 135-2008.

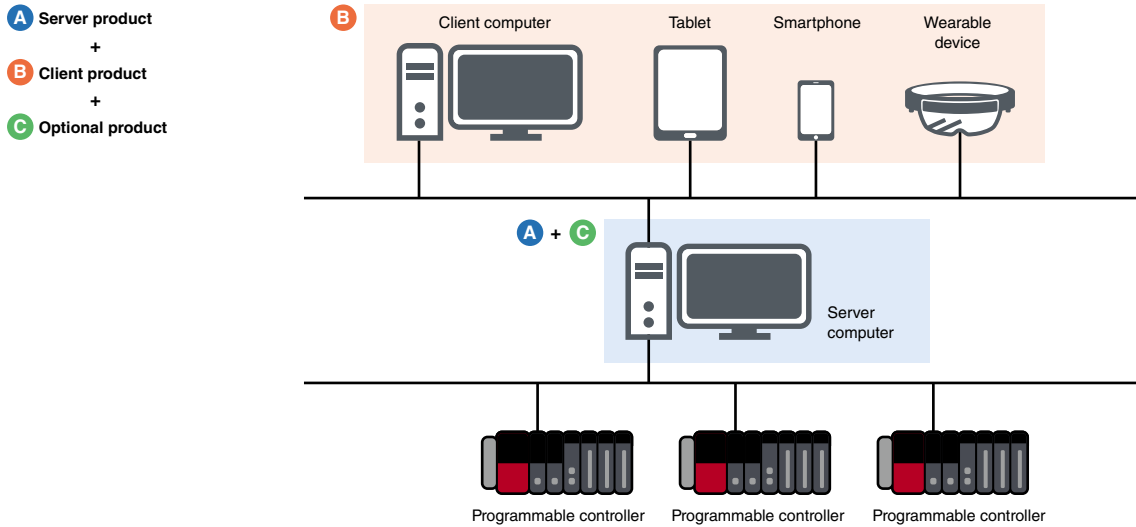
■ Configure FDA 21 CFR Part 11 compliant projects

GENESIS64™ provides functions to configure a system complying with FDA 21 CFR Part 11 which specifies electronic record management concerning food and pharmaceutical development and manufacturing.

GENESIS64™ product configuration

GENESIS64™ licenses are available as a server license, client license, and optional license. Please select products by referring to steps on page 35 and later.

Please refer to page 45 for the product list.



Function list (A server product)

●: included -: not included

		GENESIS64™ Basic SCADA	GENESIS64™ Advanced
How to count tags		Static Tag (count all tags)	Dynamic Tag (count tags in use)
Number of tags		75, 150, 500, 1500, 5K*1	75, 150, 500, 1500, 5k, 15k, 50k, 100k, 250k*1
Server function			
AlarmWorX™ Server & Logger	Alarm visualization	●	●
WebHMI™ Server	Remote monitoring (for web browser)	●	●
AssetWorX™ Server	Asset management using a hierarchical tree structure	● (Excel® based bulk asset configuration tool is not included)	●
Hyper Historian™ Express*2	High-speed/highly reliable data collection	●	●
Redundant/Distribute	Redundant/distributed server	-	●
AlertWorX™	Alarm notification by email	Option	●
MobileHMI™ Server	Remote monitoring (for mobile application)	Option	●
Workflow	Programming by flowchart	Option	●
Hyper Historian™ Standard/Enterprise*2	High-speed/highly reliable data collection (extended version)	Option	Option
BridgeWorX™	Transaction-based processing by flowchart	Option	Option
ReportWorX™	Automated reporting	Option	Option
Connection to devices/external services			
Mitsubishi Electric FA Connector	Mitsubishi Electric products connection (direct driver)	●	●
OPC Classic	OPC Classic connection	●	●
OPC UA	OPC UA connection	●	●
Databases (GridWorX™ Server)	Database access	●	●
EtherNet/IP™	EtherNet/IP™ connection	Option	●
MODBUS®	MODBUS® connection	Option	●
BACnet®	BACnet® connection	Option	●
SNMP	SNMP connection	Option	●
Web Services	Web service access	Option	●
IoT Publisher (MQTT/AMQP/JSON)	Data transferring to cloud service	Option	●
Client function			
GraphWorX™	Graphic creation/visualization	● (without 3D function)	●
TrendWorX™ Viewer	Real-time and historical trends	●	●
AlarmWorX™ Viewer	Alarm visualization	●	●
EarthWorX™ Viewer	Monitor widely dispersed assets	-	●
KPIWorX™	Dashboard creation	●	●
ReportWorX™ Express	Manual reporting	●	●
Workbench	Centralized project management	●	●
Asset Navigator	Asset tree display	Option	●
GridWorX™ Viewer	Database access	Option	●

*1. Select additional tag option to increase tag count if needed.

*2. For functional differences, please refer to the function list (Hyper Historian™ products) on page 35.

1

Select a server product

Select either GENESIS64™ Basic SCADA or GENESIS64™ Advanced according to the number of tags and necessary functions referring to the product list on page 45 and function list (A server product) on page 34.

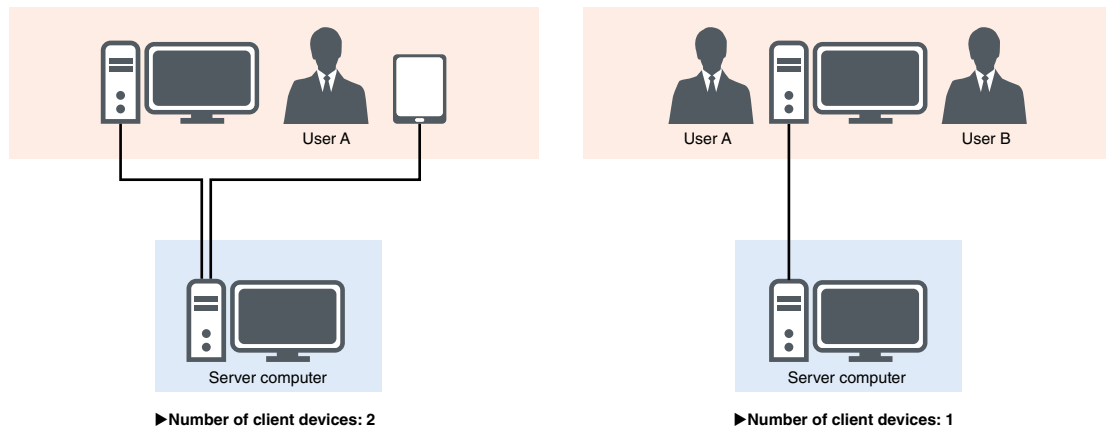
For tags, please refer to page 37.

2

Select client products

The maximum number of client devices*1 simultaneously accessing the monitoring control screen of the GENESIS64™ server during system monitoring. Select client products according to the estimated maximum number of client devices.

*1. Count as "2" when the same user accesses from both computer and smartphone simultaneously. Count as "1" when a different user accesses from a shared computer.



Device	Accessing method	Necessary product
Computer	Browser*2	WebHMI™
	Application*3	WebHMI™ or MobileHMI™
Mobile device (smartphone, tablet)	Browser*2	WebHMI™
	Application*3	WebHMI™ or MobileHMI™

*2. Please refer to the operating environment on page 44 for supported browsers.
 *3. To use the application, please search for "MobileHMI™" in App Store® or Google Play™.

3

Select optional products

Select optional products from the product list according to selected functions.

Function list (Hyper Historian™ products)

Function	Hyper Historian™ Enterprise (GEN64-HH-ENT)	Hyper Historian™ Standard (GEN64-HH-STD)	Hyper Historian™ Express (included in server product)
High-speed data collection	●	●	●
Collected data calculation/storage	●	●	-
Collection/accumulation distribution	●	-	-
Server redundancy	●*4	-	-
How to count tags	Tags are counted separately from the server product		Tags are counted as server product tags
Number of tags	75, 150, 500, 1500, 5k, 15k, 50k, 100k, 250k, 500k, 1M		75, 150, 500, 1500, 5k*5

*4. Hyper Historian™ Redundant (GEN64-HH-R) for redundant system is available. Please refer to the product list on page 45 for details.
 *5. More than 5K tags can be handled with additional tag pack option.

option 1

System configuration options

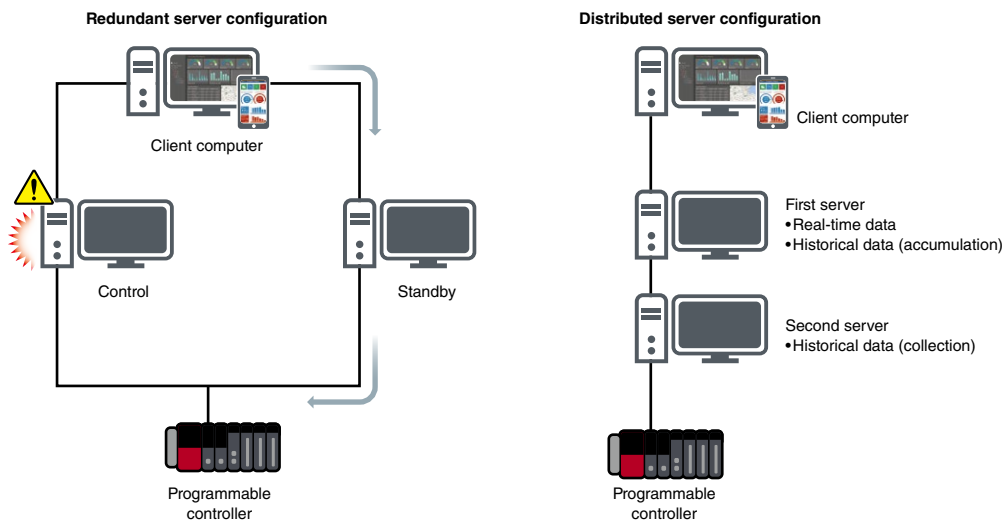
GENESIS64™ supports several levels of highly reliable/high availability systems. To determine the best fit for your application needs, please refer to the system configuration below.

■ Redundant server configuration (supported by GENESIS64™ Advanced only)

- Redundant GENESIS64™ Advanced servers (continuous monitoring is assured by automatic screen switching)
- Redundant Hyper Historian™ servers (secure data by continuous historical data collection)
 - ▶ ① GENESIS64™ and ② Hyper Historian™ Enterprise (GEN64-HH-ENT) are necessary for each control and standby server

■ Distributed server configuration

- Distributed Hyper Historian™ servers for collection/accumulation function
 - ▶ Hyper Historian™ Enterprise (GEN64-HH-ENT) is necessary



option 2

Select software or hardware license

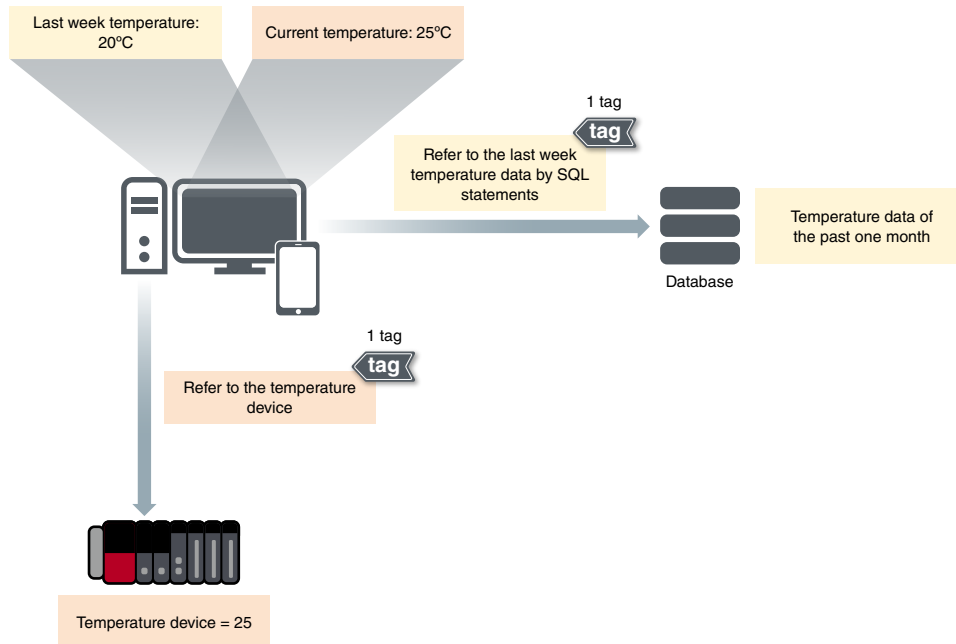
License is applied to either a server computer or USB hardware key. Choose either referring to the table below.

Options	Server computer	USB hardware key
Image		
Benefits	<ul style="list-style-type: none"> • Purchasing of USB hardware key is unnecessary • No risk of accidental loss of USB hardware key 	<ul style="list-style-type: none"> • License migration from development server to production server is easy • In case of an issue with the production server, the license can easily be transferred to another server

Please refer to page 40 for license registration procedure.

What are tags?

Tags are data sets for GENESIS64™ to access external devices. The number of data sets used in runtime of GENESIS64™ are counted. In the example below, a device value of a programmable controller = 25 and an SQL statement that refer to the last week temperature data are targets counted.



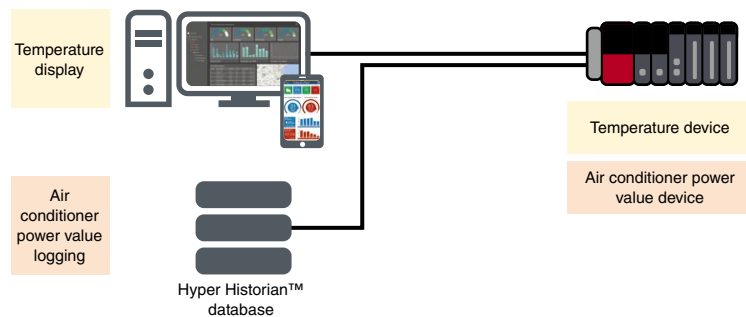
■ In the case of Hyper Historian™

- When using Hyper Historian™, tags are counted separately from GENESIS64™*1*2
- “The number of historical data collection settings” are counted as the number of tags

Difference of counted tag

Type of data	Real-time data	Historical data
When using Hyper Historian™	GENESIS64™ tag	Hyper Historian™ tag
When using Hyper Historian™ Express	GENESIS64™ tag	GENESIS64™ tag

*1. When using historical data collection/accumulation (Hyper Historian™ Express) included in GENESIS64™ server product (refer to the product list on page 45), a tag is counted as GENESIS64™ tag.
 *2. Historical data collection setting that exceeds the number of tags of Hyper Historian™ in use cannot be counted as GENESIS64™ tag.



How to count tags -GENESIS64™ Basic SCADA-

Data to be used for displaying alarm conditions and screen/table need to be defined as asset tag on AssetWorX™.

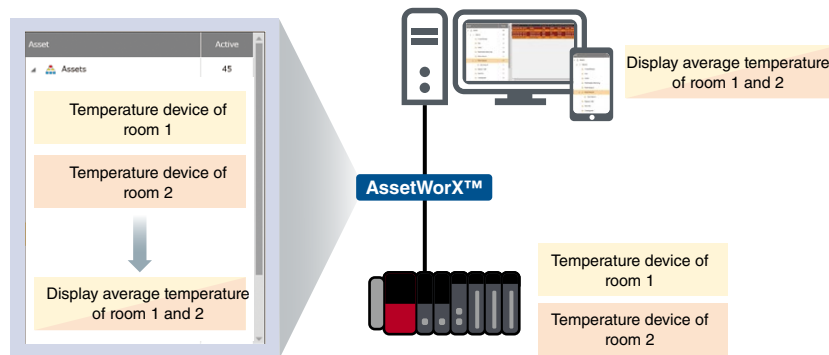
Example

Display average temperature of two rooms

Number of asset tags are defined during configuration of the tag database in AssetWorX™. Counting method of tags differs according to building method of asset tags.

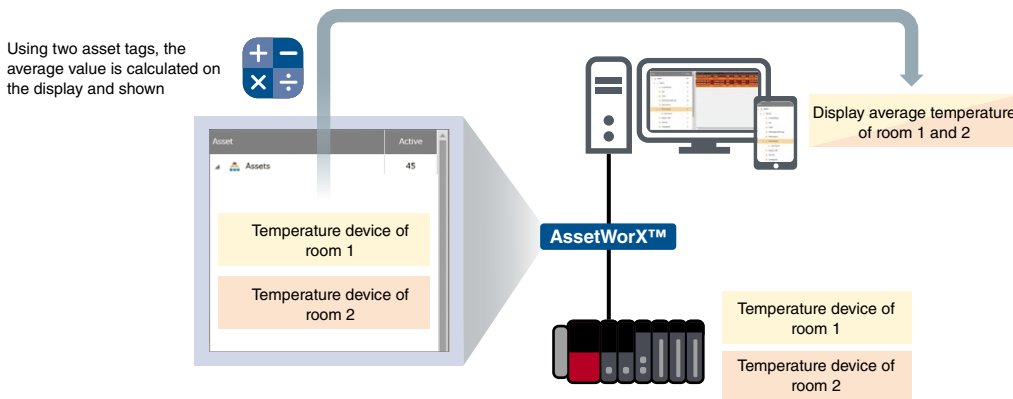
Building method 1

To assign an asset tag to display “average temperature of room 1 and 2” (when calculating the average temperature of room 1 and 2 in the programmable controller outside the SCADA), the following three tags are necessary: “room 1 temperature,” “room 2 temperature,” and an expression for “average temperature of room 1 and 2”.



Building method 2

To assign a defined formula to calculate “average temperature of room 1 and 2” on the display, two asset tags “temperature of room 1” and “temperature of room 2” are necessary.



■ Timing of counting tags

All tags are counted at a start of a server according to the configuration of the AssetWorX™ tag database.

■ How to count tags when accessing from multiple clients

Tags are counted at the timing of server starting, the number of clients being accessed will not affect the number of tags counted.

■ How to count tags when Hyper Historian™ is used

Both asset tags and Hyper Historian™ tags are counted.

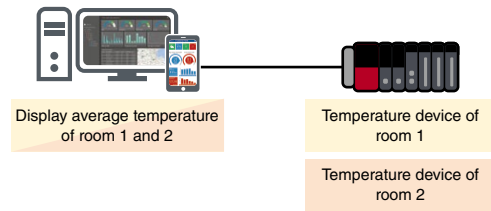
How to count tags -GENESIS64™ Advanced-

Tags are counted by data set unit for read and write.

Example 1

Display average temperature of two rooms on the screen

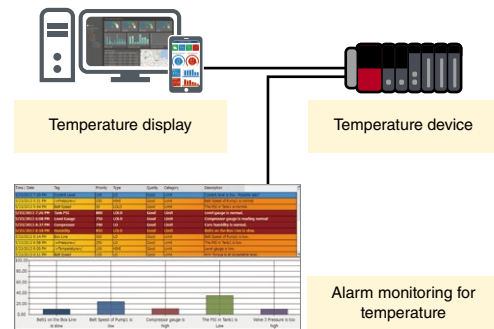
Only one data set is displayed with this setting, however, it is counted as **two tags** since two data sets are read.



Example 2

Set temperature device of a programmable controller to “screen display” and “alarm conditions”

Only one “temperature” data set is accessed for read and write with this setting, it is counted as **one tag**.



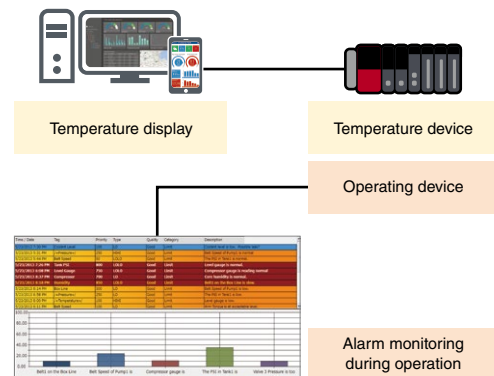
■ Timing of counting tag- Catch and release

Tags are counted in runtime at the start of reading from/writing to external data sources. GENESIS64™ Advanced stops counting (releasing tags) upon completion of reading from/writing to external data (e.g. closing a screen).

Example

System to display temperature device of a programmable controller and monitor alarm of operating device

Tag is counted as **one tag** upon start of alarm monitoring. **Another tag** is counted when opening a display.



Tag count increase and decrease

●: Counted -: Not counted

	Start	Alarm monitoring start	Display	Close display*1	Alarm monitoring end
Temperature tag	-	-	●	-	-
Operating tag	-	●	●	●	-
Total tags	0	1	2	1	0

*1. After closing the screen, connection is maintained for a while and counting status is kept to promptly redisplay.

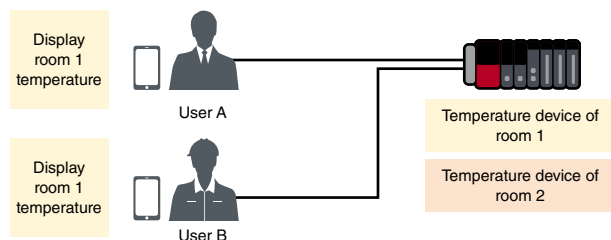
■ How to count tags when viewed from multiple clients

When viewing the same screen, the total number of tags on one screen are counted. When accessing other screens, the total number of tags on accessed screens are counted.

Example 1

When multiple users display the same screen (same data set)

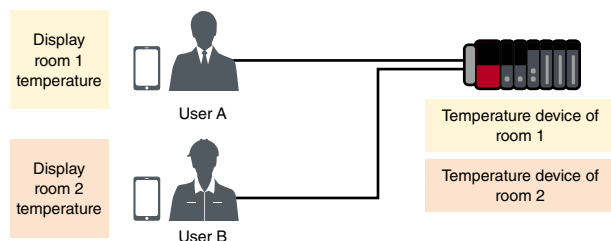
Only room 1 temperature is read, it is counted as **one tag**.



Example 2

When multiple users display different screens (different data sets)

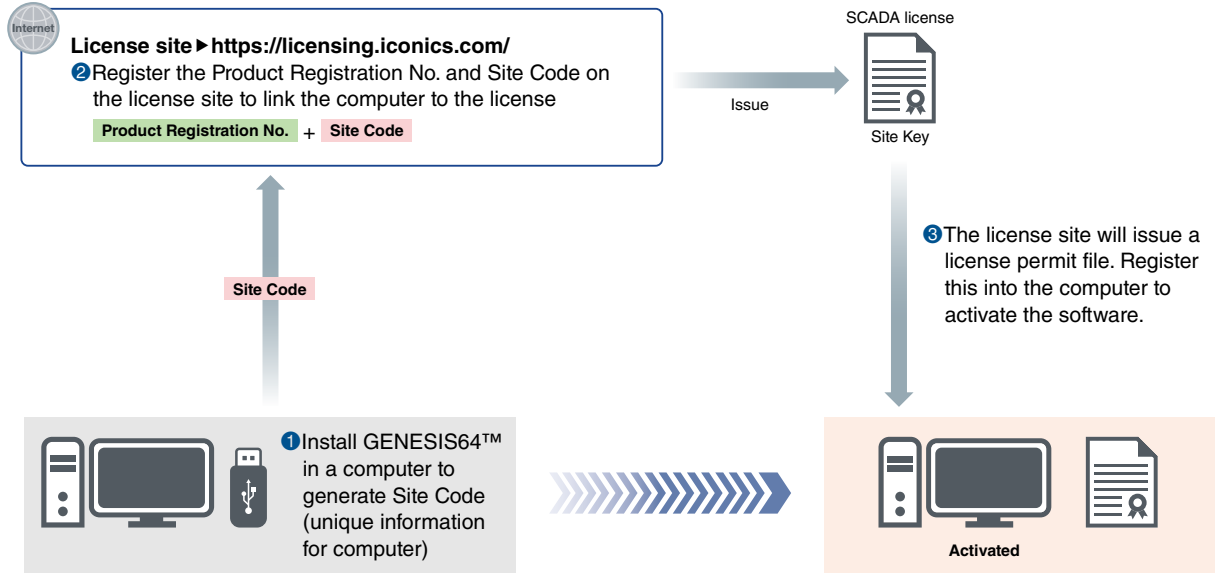
Room 1 and 2 temperatures are read, it is counted as **two tags**.



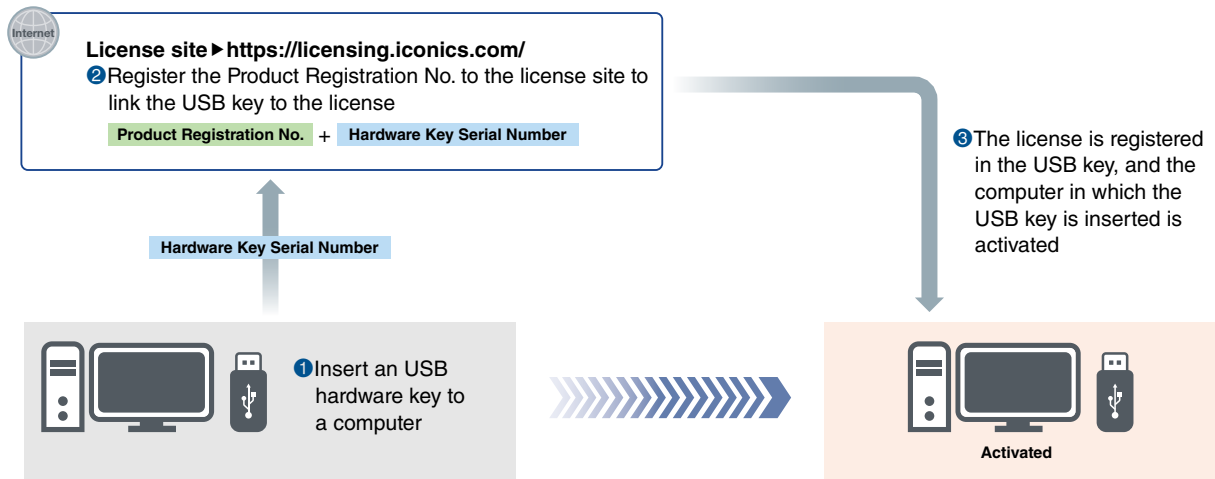
License registration procedure

Upon purchase of a product, a license to use GENESIS64™ is provided.

Software license



USB hardware key



Extensive global support coverage providing expert help whenever needed

■ Global FA centers

■ EMEA

Europe FA Center

MITSUBISHI ELECTRIC EUROPE B.V. Polish Branch
Tel: +48-12-347-65-81

Germany FA Center

MITSUBISHI ELECTRIC EUROPE B.V. German Branch
Tel: +49-2102-486-0 / Fax: +49-2102-486-1120

UK FA Center

MITSUBISHI ELECTRIC EUROPE B.V. UK Branch
Tel: +44-1707-27-8780 / Fax: +44-1707-27-8695

Czech Republic FA Center

MITSUBISHI ELECTRIC EUROPE B.V. Czech Branch
Tel: +420-255 719 200

Italy FA Center

MITSUBISHI ELECTRIC EUROPE B.V. Italian Branch
Tel: +39-039-60531 / Fax: +39-039-6053-312

Russia FA Center

MITSUBISHI ELECTRIC (RUSSIA) LLC ST.
Petersburg Branch
Tel: +7-812-633-3497 / Fax: +7-812-633-3499

Turkey FA Center

MITSUBISHI ELECTRIC TURKEY Elektrik Urunleri A.S.
Tel: +90-216-969-2500 / Fax: +90-216-661-4447

■ Asia-Pacific

China

Beijing FA Center

MITSUBISHI ELECTRIC AUTOMATION (CHINA) LTD.
Beijing FA Center
Tel: +86-10-6518-8830 / Fax: +86-10-6518-2938

Guangzhou FA Center

MITSUBISHI ELECTRIC AUTOMATION (CHINA) LTD.
Guangzhou FA Center
Tel: +86-20-8923-6730 / Fax: +86-20-8923-6715

Shanghai FA Center

MITSUBISHI ELECTRIC AUTOMATION (CHINA) LTD.
Shanghai FA Center
Tel: +86-21-2322-3030 / Fax: +86-21-2322-3000

Tianjin FA Center

MITSUBISHI ELECTRIC AUTOMATION (CHINA) LTD.
Tianjin FA Center
Tel: +86-22-2813-1015 / Fax: +86-22-2813-1017

Taiwan

Taipei FA Center

SETSUYO ENTERPRISE CO., LTD.
Tel: +886-2-2299-9917 / Fax: +886-2-2299-9963

Korea

Korea FA Center

MITSUBISHI ELECTRIC AUTOMATION KOREA CO., LTD.
Tel: +82-2-3660-9632 / Fax: +82-2-3664-0475

Thailand

Thailand FA Center

MITSUBISHI ELECTRIC FACTORY AUTOMATION
(THAILAND) CO., LTD.
Tel: +66-2682-6522-31 / Fax: +66-2682-6020

ASEAN

ASEAN FA Center

MITSUBISHI ELECTRIC ASIA PTE. LTD.
Tel: +65-6470-2480 / Fax: +65-6476-7439

Indonesia

Indonesia FA Center

PT. MITSUBISHI ELECTRIC INDONESIA
Cikarang Office
Tel: +62-21-2961-7797 / Fax: +62-21-2961-7794

Vietnam

Hanoi FA Center

MITSUBISHI ELECTRIC VIETNAM COMPANY LIMITED
Hanoi Branch Office
Tel: +84-24-3937-8075 / Fax: +84-24-3937-8076

Ho Chi Minh FA Center

MITSUBISHI ELECTRIC VIETNAM COMPANY LIMITED
Tel: +84-28-3910-5945 / Fax: +84-28-3910-5947

Philippines

Philippines FA Center

MELCO Factory Automation Philippines Inc.
Tel: +63-(0)2-8256-8042

India

India Ahmedabad FA Center

MITSUBISHI ELECTRIC INDIA PVT. LTD.
Ahmedabad Branch
Tel: +91-7965120063

India Bangalore FA Center

MITSUBISHI ELECTRIC INDIA PVT. LTD.
Bangalore Branch
Tel: +91-80-4020-1600 / Fax: +91-80-4020-1699

India Chennai FA Center

MITSUBISHI ELECTRIC INDIA PVT. LTD.
Chennai Branch
Tel: +91-4445548772 / Fax: +91-4445548773

India Coimbatore FA Center

MITSUBISHI ELECTRIC INDIA PVT. LTD.
Coimbatore Branch
Tel: +91-422-438-5606

India Gurgaon FA Center

MITSUBISHI ELECTRIC INDIA PVT. LTD.
Gurgaon Head Office
Tel: +91-124-463-0300 / Fax: +91-124-463-0399

India Pune FA Center

MITSUBISHI ELECTRIC INDIA PVT. LTD.
Pune Branch
Tel: +91-20-2710-2000 / Fax: +91-20-2710-2100

■ Americas

USA

North America FA Center

MITSUBISHI ELECTRIC AUTOMATION, INC.
Tel: +1-847-478-2469 / Fax: +1-847-478-2253

Mexico

Mexico City FA Center

MITSUBISHI ELECTRIC AUTOMATION, INC.
Mexico Branch
Tel: +52-55-3067-7511

Mexico FA Center

MITSUBISHI ELECTRIC AUTOMATION, INC.
Queretaro Office
Tel: +52-442-153-6014

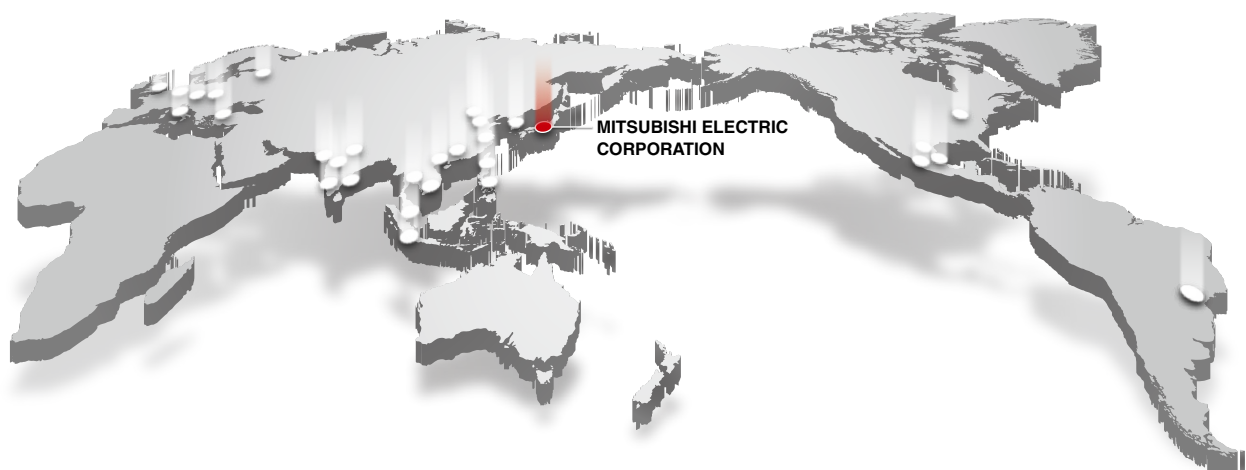
Mexico Monterrey FA Center

MITSUBISHI ELECTRIC AUTOMATION, INC.
Monterrey Office
Tel: +52-55-3067-7521

Brazil

Brazil FA Center

MITSUBISHI ELECTRIC DO BRASIL COMERCIO E
SERVICOS LTDA.
Tel: +55-11-4689-3000 / Fax: +55-11-4689-3016



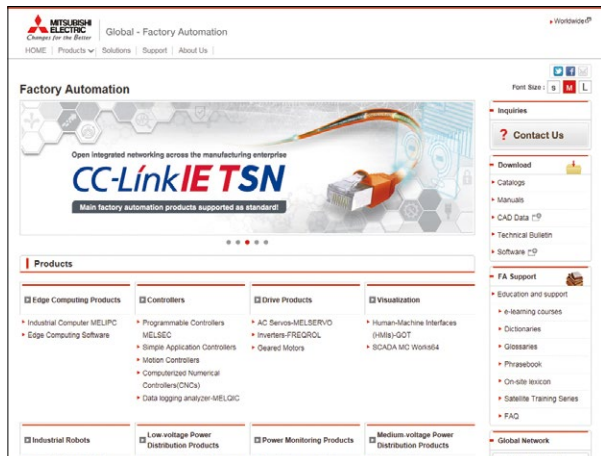
Factory Automation Global website

Mitsubishi Electric Factory Automation provides a mix of services to support its customers worldwide. A consolidated global website is the main portal, offering a selection of support tools and a window to its local Mitsubishi Electric sales and support network.

■ From here you can find:

- Overview of available factory automation products
- Library of downloadable literature
- Support tools such as online e-learning courses, terminology dictionary, etc.
- Global sales and service network portal
- Latest news related to Mitsubishi Electric factory automation

**Mitsubishi Electric Factory Automation
Global website:
www.MitsubishiElectric.com/fa**



Online e-learning

An extensive library of e-learning courses covering the factory automation product range has been prepared. Courses from beginner to advanced levels of difficulty are available in various languages.



■ Beginner level

Designed for newcomers to Mitsubishi Electric Factory Automation products gaining a background of the fundamentals and an overview of various products related to the course.

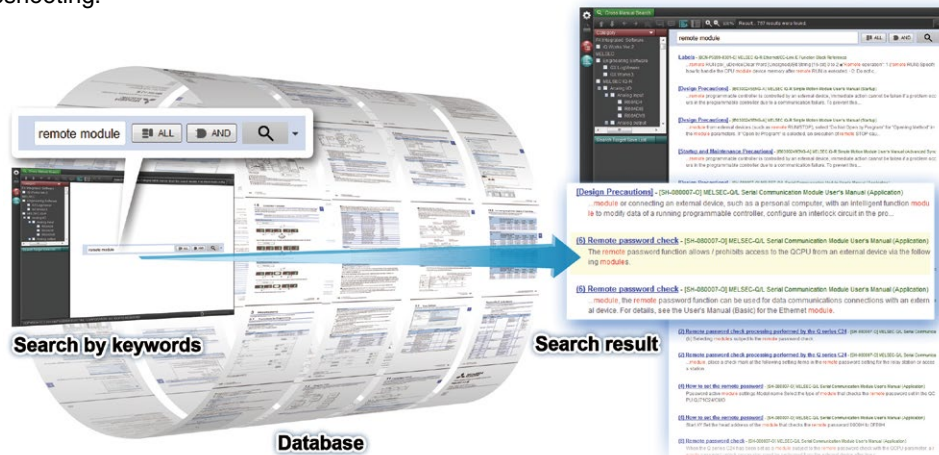
■ Basic to Advanced levels

These courses are designed to provide education at all levels. Various different features are explained with application examples providing an easy and informative resource for in-house company training.

Innovative next-generation, e-Manual

e-Manual Viewer

The e-Manual viewer is a next-generation digital manual offered by Mitsubishi Electric that consolidates factory automation products manuals into an easy-to-use package with various useful features integrated into the viewer. The e-Manual allows multiple manuals to be cross-searched at once, further reducing time for setting up products and troubleshooting.



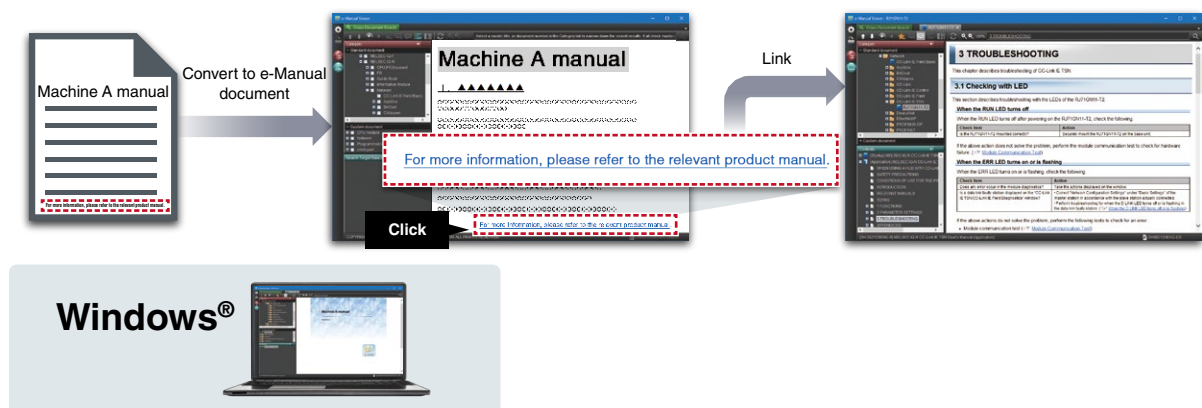
Key features included

- One-stop database containing all required manuals, with local file cache
- Included with GX Works3 engineering software
- Also available in tablet version
- Easily download manuals all at once
- Multiple users can share the latest manuals and knowhow with document sharing function
- Directly port sample programs within manuals to GX Works3
- Downloaded manuals are usable offline



e-Manual Create

e-Manual Create is software for converting word files and chm files to e-Manual documents. e-Manual Create allows users to directly refer to Mitsubishi Electric e-Manuals from user's customized device maintenance manuals and such, supporting quick troubleshooting and reduction in document creation process.



* To obtain the Windows® version of e-Manual Viewer and e-Manual Create, please contact your local Mitsubishi Electric sales office or representative.

Server product

System requirements

Item	Specifications
CPU	Quad Core 64-bit processor or better
RAM	8 GB or larger
Storage	4 GB or larger (adequate physical memory for the actual data to be saved)
Virtual memory	16 GB or larger (2x RAM capacity recommended)
Operating System (OS)*1	64-bit Windows® OS
Display	Resolution: 1024 × 768 pixels or more
Database*2	Microsoft® SQL Server®
Microsoft® .NET Framework	4.7.2
Web server*3	Microsoft® Internet Information Services (IIS) 7.0 or later
Web browser*3	Microsoft Edge®, Firefox®, Safari®, Google Chrome™, or Internet Explorer® 11*4

*1. Please refer to "Supported OS table for details.

*2. Please refer to "Supported database table for details.

*3. Use when displaying a screen on the client. For details on supported web browsers, please refer to "Supported web browser table.

*4. Internet Explorer® 11 only supported for Windows® Presentation Foundation (WPF) WebHMI™, not HTML5 WebHMI™.

Supported OS

OS*5	GENESIS64™	Hyper Historian™	Energy AnalytiX® Facility AnalytiX® Quality AnalytiX®
Windows® 10*6	●	●	-
Windows® 8.1*7	●	●	-
Microsoft® Windows Server® 2019	●	●	●
Microsoft® Windows Server® 2016	●	●	●
Microsoft® Windows Server® 2012 R2	●	●	●
Microsoft® Windows Server® 2012	●	●	●

*5. Operation on Embedded system is not supported.

*6. Operation on Windows® 10 Professional and Enterprise (including 2019 LTSC/2016 LTSB) is supported.

*7. Operation on Windows® 8.1 Professional and Enterprise is supported.

Supported database

Database	GENESIS64™
Microsoft® SQL Server® 2019 (including Express)*8	●
Microsoft® SQL Server® 2017 (including Express)*8	●
Microsoft® SQL Server® 2016 (including Express)*8	●
Microsoft® SQL Server® 2014 (including Express)*8	●

*8. When using Microsoft® SQL Server® Express (free edition), a capacity of one database is limited to 10 GB.

IoT device

System requirements

Item	Specifications
CPU	Intel Atom® 38xx Dual Core/Arm® 32v7 Dual Core, or comparable processor
RAM	2 GB (4 GB recommended)
Storage	32 GB or larger
OS	Raspbian-stretch (Arm® 32) Ubuntu 16.04 (AMD 64) Ubuntu 18.04 (AMD 64) Ubuntu Server 16.04 (AMD 64) Ubuntu Server 18.04 (AMD 64)
Microsoft® Azure® service	Microsoft® Azure® IoT Hub (tier S1 or higher), Microsoft® Azure® Storage Account
Communication	Ethernet, Wi-Fi, or cellular (3G/4G)

Screen display

Supported web browser

Web browser	HTML5 technology	Windows® Presentation Foundation (WPF) technology
Microsoft Edge®	●	-
Firefox®	●	-
Safari®	●	-
Google Chrome™	●	-
Internet Explorer® 11	-	●

GENESIS64™ server product

Product name	Model	Number of tags	Outline
GENESIS64™ Basic SCADA	GEN64-BASIC	75, 150, 500, 1500, 5k	Server for configuration and runtime with modular licensing for small to medium applications.
GENESIS64™ Advanced*1	GEN64-APP	75, 150, 500, 1500, 5k, 15k, 50k, 100k, 250k	Server for configuration and runtime with comprehensive licensing for large and distributed applications.

*1. Runtime-only license version is available. Please consult us when you are requesting for quotation.

GENESIS64™ client product

Product name	Model	Number of clients	Outline
Client for monitoring control*2*3	WEBHMI-BRWSR	1, 5, 25, 100, 500	Fully interactive read/write clients for use on desktops, web browsers using WPF or HTML5, or as mobile app clients.
Client for monitoring control*3 (for mobile application)	MOBILEHMI-CLIENT	1, 5, 25, 100, 500	Fully interactive read/write clients dedicated to access via the MobileHMI™ app on smartphones, tablets, or AR devices.

*2. License for development (multiple persons can develop simultaneously on one server) is available.

*3. Read-only and browser-only client licensing is available.

Optional products*4

Product name	Model	Unit	Outline
Hyper Historian™	GEN64-HH-STD GEN64-HH-ENT GEN64-HH-R	75, 150, 500, 1500, 5k, 15k, 50k, 100k, 250k, 500k, 1M (tag)	Time series data historian collecting large amounts of shop floor data at high speed. STD: Supports performance calculations and predefined aggregates. ENT/R: In addition to the above, supports remote collectors, advanced data compression and redundancy. (Model numbers R include two ENT licenses for redundant system).*5
BridgeWorX™	BRIDGEWORX64	SVR (1 transaction) LITE (5 transactions) STD (25 transactions) ENT (100 transactions)	Graphical data bridging tool to execute simple to very complex data transaction scenarios between automation and enterprise systems. The number of concurrently executing transactions determines which license to choose.*6
ReportWorX™	REPORTWORX64	SVR (1 report) LITE (5 reports) STD (25 reports) ENT(100 reports)	Report generation engine to configure and run reports on schedule or on demand. Finished reports can be delivered via email, SMS, and file copy. (Supported formats: Excel®, PDF, HTML, CSV). Number of concurrently executing reports determines which license to choose.*7
Energy AnalytiX®	AX-EA-A	-	Energy monitoring, analysis, and management system delivering rich, real-time visualization for energy demand, consumption and cost.*8*9
	AX-EA-METER	1, 5, 25, 100, 500, 1500, 5K, 10K (meter)	Additional Energy AnalytiX® meters.
Quality AnalytiX®	AX-QA-A	-	This quality control package uses highly specialized Statistical Process Control (SPC) calculations for manufacturing quality management, and drive corrective actions based on process trends.*8
Facility AnalytiX®	AX-FA-A	-	This package provides advanced fault detection and diagnostics significantly reducing system downtime and improving operational efficiency.*10
	AX-FA-ASSET	1, 5, 25, 100, 500, 1500, 5K, 10K (asset)	Additional Facility AnalytiX® assets.
CFSWorX™	CFSWORX	-	This package can alert field service workers to respond to equipment service needs based on location. Worker availability and location is monitored. The package tracks field service worker responses and maintains a full audit trail.
IoTWorX™	IOT-CV IOT-CVCA IOT-CVCA-JSON-500 IOT-CVCA-JSON-5000	1, 5, 25, 100 (device)	A solution package running on IoT devices at the edge to monitor shop floor data in the cloud (annual license).*11 IOT-CV: Publish shop floor data to cloud platforms providing bidirectional real-time communication. On-premise visualization for read-only access to local data. IOT-CVCA: In addition to the above, store and forward of historical data points and merge in the cloud. Includes lightweight analytics module for fault detection. IOT-CVCA-JSON-500/5000: In addition to the above, send data in JSON format. Data sharing with third-party applications in the cloud.

*4. This list does not include options available for GENESIS64™ Basic SCADA only. For details, please refer to the function list (🔗 server product) on page 34.

*5. For difference of product functions, please refer to the function list (Hyper Historian™ products) on page 35.

*6. Other transaction product is available.

*7. Other report product is available.

*8. Hyper Historian™ license is separately required.

*9. License per instrument (meter). This license includes 5 meters.

*10. License per device (asset). This license includes 5 assets.

*11. This license applies to IoT devices.

USB hardware key

Product name	Model	Outline
USB hardware key	HW KEY-USB	USB device to store server/client /optional license. Just inserting this product to the server will activate stored license.*12

*12. Applying license to the server is possible. Please refer to the license registration procedure on page 40.

AnalytiX and its respective modules are registered trademarks of ICONICS, Inc.
 Android, Google Chrome, Google Maps, and Google Play are trademarks of Google LLC.
 Apache Kafka and Apache Hadoop are registered trademarks of the Apache Software Foundation.
 Apple, App Store, Apple Watch, Safari are trademarks of Apple Inc., registered in the U.S. and other countries.
 Arm is a registered trademark of Arm Limited (or its subsidiaries) in the US and/or elsewhere.
 Autodesk is the registered trademark of Autodesk, Inc. in the US and other countries.
 BACnet is a registered trademark of the American Society of Heating, Refrigerating and Air-Conditioning Engineers, Inc.
 COLLADA is a trademark of the Khronos Group Inc.
 Esri is a trademark of Environmental Systems Research Institute, Inc.
 Ethernet is a trademark of Xerox Corporation.
 EtherNet/IP is a trademark of ODVA, Inc.
 Firefox is the registered trademark of Mozilla Foundation in the US and other countries.
 GENESIS64, Hyper Historian, IoTWorX, KPIWorX, MobileHMI, WebHMI and their respective modules, Make the Invisible Visible, and ICONICS company logo, are trademarks of ICONICS, Inc.
 Intel Atom is a trademark of Intel Corporation or its subsidiaries in the U.S. and/or other countries.
 IOS is a registered trademark of Cisco in the U.S. and other countries and is used under license.
 Microsoft, Windows, Access, Azure, Bing, Microsoft Edge, Excel, Internet Explorer, SQL Server, and Windows Server are registered trademarks of Microsoft Corporation in the United States and other countries.
 MODBUS is a registered trademark of Schneider Electric USA, Inc.
 OPC is a trademark of OPC Foundation.
 Oracle is a registered trademark of Oracle Corporation and/or its affiliates.
 QR Code is a trademark or a registered trademark of DENSO WAVE INCORPORATED in JAPAN, the United States and/or other countries.
 SAP is a SAP and SAP affiliate company registered trademark in Germany and other countries and corresponding common-noun descriptors.
 All other company names and product names used in this document are trademarks or registered trademarks of their respective companies.

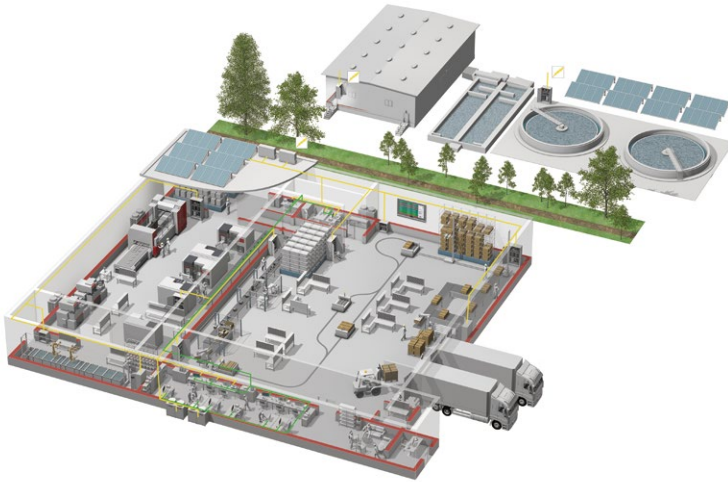
Precautions before use

This publication explains the typical features and functions of the products herein and does not provide restrictions or other information related to usage and module combinations. Before using the products, always read the product user manuals. Mitsubishi Electric will not be held liable for damage caused by factors found not to be the cause of Mitsubishi Electric; opportunity loss or lost profits caused by faults in Mitsubishi Electric products; damage, secondary damage, or accident compensation, whether foreseeable or not, caused by special factors; damage to products other than Mitsubishi Electric products; or any other duties.

For safe use

- To use the products given in this publication properly, always read the relevant manuals before beginning operation.
- The products have been manufactured as general-purpose parts for general industries, and are not designed or manufactured to be incorporated in a device or system used in purposes related to human life.
- Before using the products for special purposes such as nuclear power, electric power, aerospace, medicine or passenger-carrying vehicles, consult with Mitsubishi Electric.
- The products have been manufactured under strict quality control. However, when installing the products where major accidents or losses could occur if the products fail, install appropriate backup or fail-safe functions in the system.

YOUR SOLUTION PARTNER



Mitsubishi Electric offers a wide range of automation equipment from PLCs and HMIs to CNC and EDM machines.

A NAME TO TRUST

Since its beginnings in 1870, some 45 companies use the Mitsubishi name, covering a spectrum of finance, commerce and industry.

The Mitsubishi brand name is recognized around the world as a symbol of premium quality.

Mitsubishi Electric Corporation, established in 1921, is active in space development, transportation, semi-conductors, energy systems, communications and information processing, audio visual equipment and home electronics, building and energy management and automation systems, and has 183 factories, laboratories and offices worldwide in over 140 countries.

This is why you can rely on Mitsubishi Electric automation solution - because we know first hand about the need for reliable, efficient, easy-to-use automation and control in our own factories.

As one of the world's leading companies with a global turnover of over 4 trillion Yen (over \$40 billion), employing over 146,000 people, Mitsubishi Electric has the resource and the commitment to deliver the ultimate in service and support as well as the best products.



Low voltage: MCCB, MCB, ACB



Medium voltage: VCB, VCC



Power monitoring, energy management



Compact and Modular Controllers



Inverters, Servos and Motors



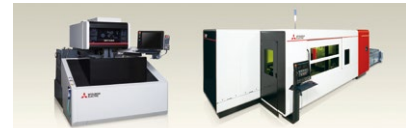
Visualization: HMIs



Numerical Control (NC)



Industrial / Collaborative Robots



Processing machines: EDM, Lasers, IDS

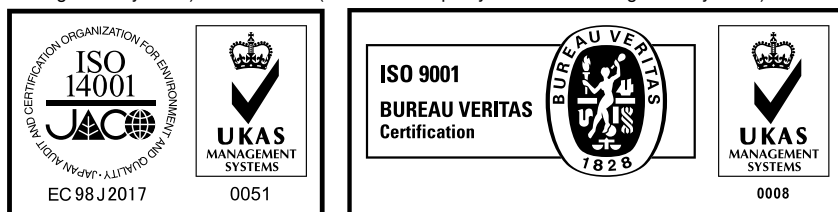


Transformers, Air conditioning, Photovoltaic systems

* Not all products are available in all countries.

Country/Region	Sales office	Tel/Fax
USA	MITSUBISHI ELECTRIC AUTOMATION, INC. 500 Corporate Woods Parkway, Vernon Hills, IL 60061, U.S.A.	Tel : +1-847-478-2100 Fax : +1-847-478-2253
Mexico	MITSUBISHI ELECTRIC AUTOMATION, INC. Mexico Branch Boulevard Miguel de Cervantes Saavedra 301, Torre Norte Piso 5, Ampliacion Granada, Miguel Hidalgo, Ciudad de Mexico, Mexico, C.P.115200	Tel : +52-55-3067-7512
Brazil	MITSUBISHI ELECTRIC DO BRASIL COMERCIO E SERVICOS LTDA. Avenida Adelino Cardana, 293, 21 andar, Bethaville, Barueri SP, Brasil	Tel : +55-11-4689-3000 Fax : +55-11-4689-3016
Germany	MITSUBISHI ELECTRIC EUROPE B.V. German Branch Mitsubishi-Electric-Platz 1, 40882 Ratingen, Germany	Tel : +49-2102-486-0 Fax : +49-2102-486-7780
UK	MITSUBISHI ELECTRIC EUROPE B.V. UK Branch Travellers Lane, UK-Hatfield, Hertfordshire, AL10 8XB, U.K.	Tel : +44-1707-28-8780 Fax : +44-1707-27-8695
Ireland	MITSUBISHI ELECTRIC EUROPE B.V. Irish Branch Westgate Business Park, Ballymount, Dublin 24, Ireland	Tel : +353-1-4198800 Fax : +353-1-4198890
Italy	MITSUBISHI ELECTRIC EUROPE B.V. Italian Branch Centro Direzionale Colleoni - Palazzo Sirio, Viale Colleoni 7, 20864 Agrate Brianza (MB), Italy	Tel : +39-039-60531 Fax : +39-039-6053-312
Spain	MITSUBISHI ELECTRIC EUROPE, B.V. Spanish Branch Carretera de Rubi, 76-80-Apdo. 420, E-08190 Sant Cugat del Valles (Barcelona), Spain	Tel : +34-935-65-3131 Fax : +34-935-89-1579
France	MITSUBISHI ELECTRIC EUROPE B.V. French Branch 25, Boulevard des Bouvets, 92741 Nanterre Cedex, France	Tel : +33-1-55-68-55-68 Fax : +33-1-55-68-57-57
Czech Republic	MITSUBISHI ELECTRIC EUROPE B.V. Czech Branch, Prague Office Pekarska 621/7, 155 00 Praha 5, Czech Republic	Tel : +420-255-719-200
Poland	MITSUBISHI ELECTRIC EUROPE B.V. Polish Branch ul. Krakowska 48, 32-083 Balice, Poland	Tel : +48-12-347-65-00
Sweden	MITSUBISHI ELECTRIC EUROPE B.V. (Scandinavia) Hedvig Mollersgata 6, 223 55 Lund, Sweden	Tel : +46-8-625-10-00 Fax : +46-46-39-70-18
Russia	MITSUBISHI ELECTRIC (RUSSIA) LLC St. Petersburg Branch Piskarevsky pr. 2, bld 2, lit "Sch", BC "Benua", office 720; 195027 St. Petersburg, Russia	Tel : +7-812-633-3497 Fax : +7-812-633-3499
Turkey	MITSUBISHI ELECTRIC TURKEY Elektrik Urunleri A.S. Serifali Mah. Kale Sok. No: 41 TR 34775 Umraniye, Istanbul/Turkey	Tel : +90-216-969-2500 Fax : +90-216-661-4447
UAE	MITSUBISHI ELECTRIC EUROPE B.V. Dubai Branch Dubai Silicon Oasis, P.O.BOX 341241, Dubai, U.A.E.	Tel : +971-4-3724716 Fax : +971-4-3724721
South Africa	ADROIT TECHNOLOGIES 20 Waterford Office Park, 189 Witkoppen Road, Fourways, South Africa	Tel : +27-11-658-8100 Fax : +27-11-658-8101
China	MITSUBISHI ELECTRIC AUTOMATION (CHINA) LTD. Mitsubishi Electric Automation Center, No.1386 Hongqiao Road, Shanghai, China	Tel : +86-21-2322-3030 Fax : +86-21-2322-3000
Taiwan	SETSUYO ENTERPRISE CO., LTD. 6F, No.105, Wugong 3rd Road, Wugu District, New Taipei City 24889, Taiwan	Tel : +886-2-2299-2499 Fax : +886-2-2299-2509
Korea	MITSUBISHI ELECTRIC AUTOMATION KOREA CO., LTD. 7F to 9F, Gangseo Hangang Xi-tower A, 401, Yangcheon-ro, Gangseo-Gu, Seoul 07528, Korea	Tel : +82-2-3660-9569 Fax : +82-2-3664-8372
Singapore	MITSUBISHI ELECTRIC ASIA PTE. LTD. 307 Alexandra Road, Mitsubishi Electric Building, Singapore 159943	Tel : +65-6473-2308 Fax : +65-6476-7439
Thailand	MITSUBISHI ELECTRIC FACTORY AUTOMATION (THAILAND) CO., LTD. 12th Floor, SV.City Building, Office Tower 1, No. 896/19 and 20 Rama 3 Road, Kwaeng Bangpongpan, Khet Yannawa, Bangkok 10120, Thailand	Tel : +66-2682-6522-31 Fax : +66-2682-6020
Vietnam	MITSUBISHI ELECTRIC VIETNAM COMPANY LIMITED Unit 01-04, 10th Floor, Vincom Center, 72 Le Thanh Ton Street, District 1, Ho Chi Minh City, Vietnam	Tel : +84-28-3910-5945 Fax : +84-28-3910-5947
Indonesia	PT. MITSUBISHI ELECTRIC INDONESIA Gedung Jaya 8th Floor, JL. MH. Thamrin No.12, Jakarta Pusat 10340, Indonesia	Tel : +62-21-31926461 Fax : +62-21-31923942
India	MITSUBISHI ELECTRIC INDIA PVT. LTD. Pune Branch Emerald House, EL-3, J Block, M.I.D.C., Bhosari, Pune-411026, Maharashtra, India	Tel : +91-20-2710-2000 Fax : +91-20-2710-2100
Australia	MITSUBISHI ELECTRIC AUSTRALIA PTY. LTD. 348 Victoria Road, P.O. Box 11, Rydalmere, N.S.W 2116, Australia	Tel : +61-2-9684-7777 Fax : +61-2-9684-7245

Mitsubishi Electric Corporation Nagoya Works is a factory certified for ISO 14001 (standards for environmental management systems) and ISO 9001 (standards for quality assurance management systems).



MITSUBISHI ELECTRIC CORPORATION

HEAD OFFICE: TOKYO BLDG., 2-7-3, MARUNOUCHI, CHIYODA-KU, TOKYO 100-8310, JAPAN
www.MitsubishiElectric.com