

May. 2020
GT Works3 Ver.1.235V

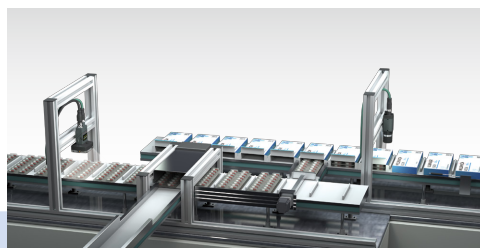
Graphic Operation Terminal

GOT2000 NEWS Vol.11

Top Five News of the GOT2000 Series

NEWS
1

Construct an inspection and measurement system easily at less cost



NEWS
2

Expanded models that can be connected with GOT Drive



NEWS
3

**GT Designer3 is easier to use than ever
and reduces screen design man hour**



NEWS
4

Panel Mount HMI Speaker has been released

* Manufactured by MITSUBISHI ELECTRIC ENGINEERING COMPANY LIMITED



NEWS
5

Enhanced password security that supports FDA 21 CFR Part 11



For details ▶▶▶▶▶▶▶▶▶▶

OPEN

NEWS 1

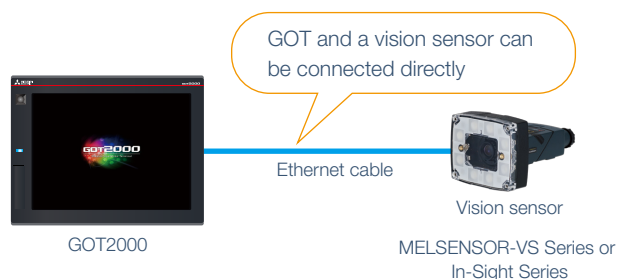
Construct an inspection and measurement system easily at less cost

■ Vision sensor monitor function **NEW**

✓GT27 ✓GT25 □GT23 □GT21 □GS21 □SoftGOT

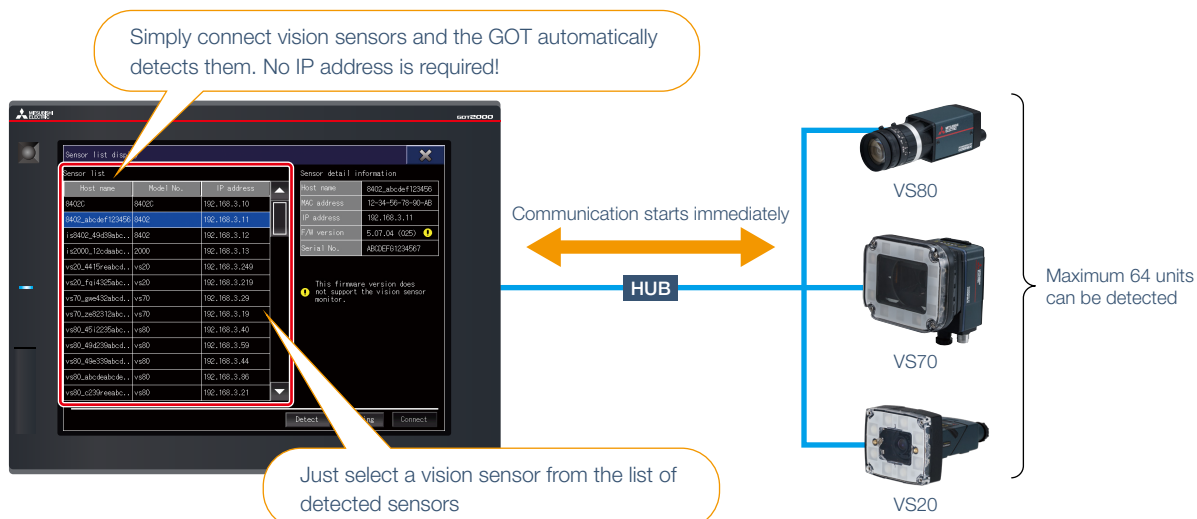
Build a vision sensor system easily by linking GOT with MELSENSOR Vision Sensors. It can be built only with GOT, vision sensors, and an Ethernet cable.

Since GOT has a dedicated screen to monitor vision sensors and edit the parameters, it is possible to operate the vision sensor system without a personal computer.



Point 1

Easy connection to vision sensors

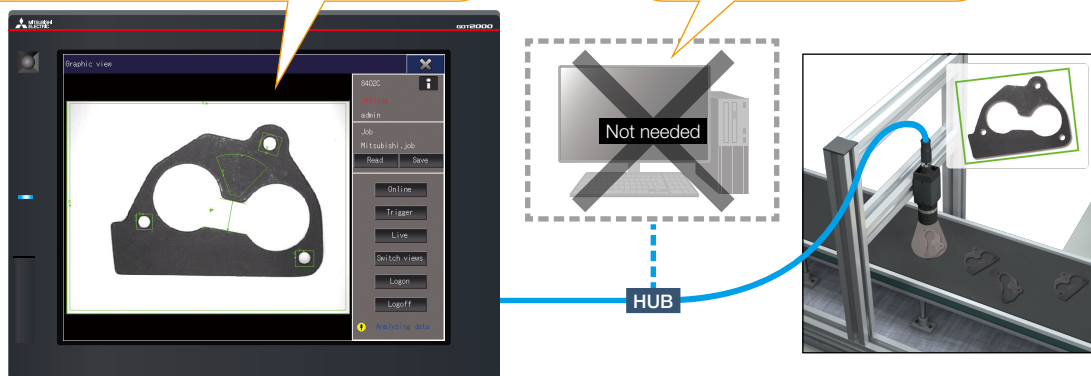


Point 2

No personal computer and monitor needed

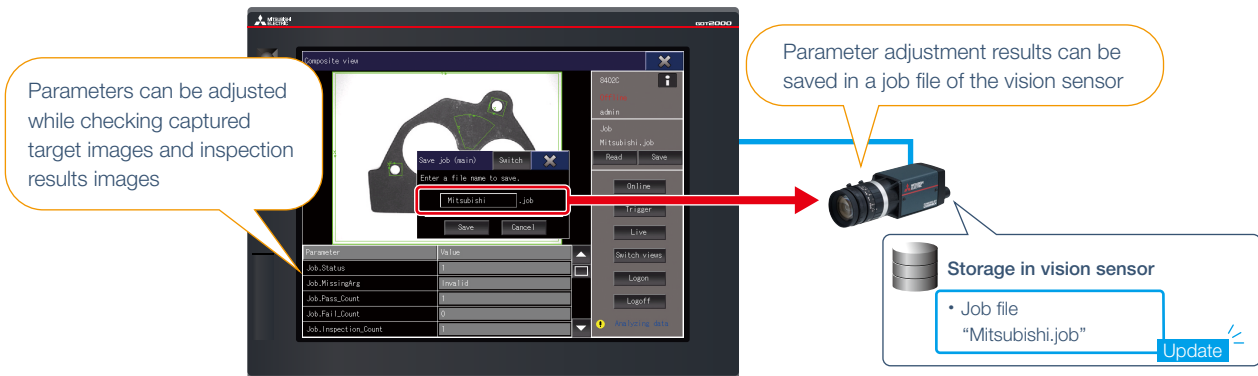
Captured target images and inspection results images are shown overlapped on the GOT screen

No separate personal computer and monitor are required



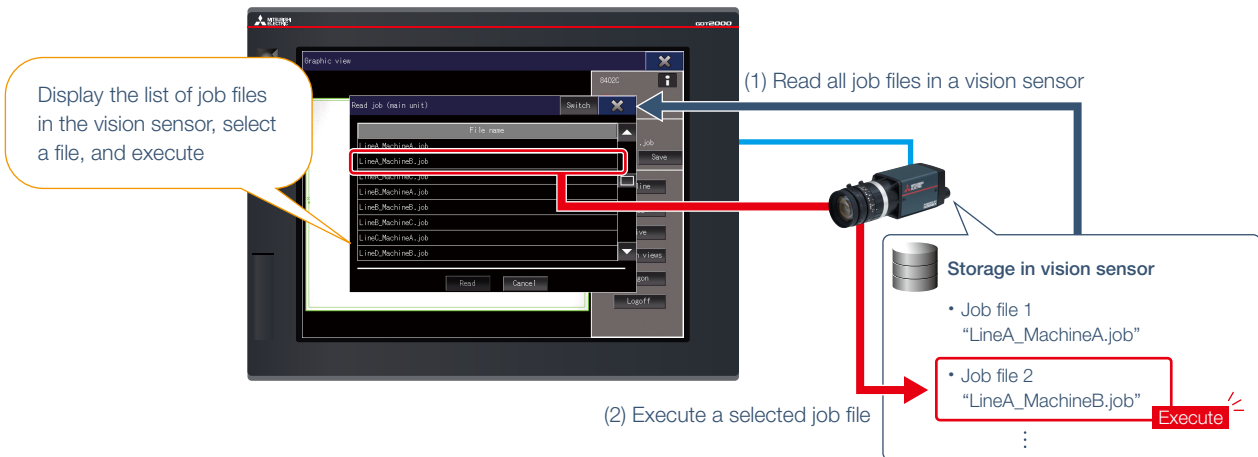
Point 3

Set up vision sensors on GOT



Point 4

Change and execute job files according to the work



Vision sensor monitor function specifications

Item	Specifications
Number of detectable vision sensors	Maximum 64 units
Number of monitorable/editable job files	Maximum 100 files
Editable parameters	Parameters to correct items except for inspection areas and model areas
Creating new job files	Not allowed *1
Vertical display	Not allowed

*1 To create a new job file, use In-Sight Explorer for MELSENSOR or In-Sight Explorer.

Manufacturer	Supported models	Model/series	F/W version
Mitsubishi Electric Corporation	MELSENSOR-VS Series	VS80, VS70, VS20	Ver. 5.7.5 or later
Cognex Corporation	In-Sight Series	In-Sight8000, In-Sight7000, In-Sight2000	Ver. 5.8.0 or later

NEWS 2 Expanded models that can be connected with GOT Drive



■ Connection to FR-E800 inverters and sample screens NEW

☒GT27
 ☒GT25
 ☒GT23*1
 ☒GT21*1
 ☒GS21*1
 ☒SoftGOT*1

Connection to new FR-E800 inverters has been supported. Sample screens are available for helping you visualize connection easily.

*1 Sample screens are not supported by GT23, GT21, GS21, and GT SoftGOT.

[Sample screen functions]

- Current value batch monitor
- Life diagnosis
- Parameter adjustment
- Machine diagnosis
- Simple backup/restoration of parameters
- Operation command
- Alarm history

[How to obtain sample screens]

Sample screens are included in GT Works3 (Version 1.235V or later). For the details, please contact your local sales office.

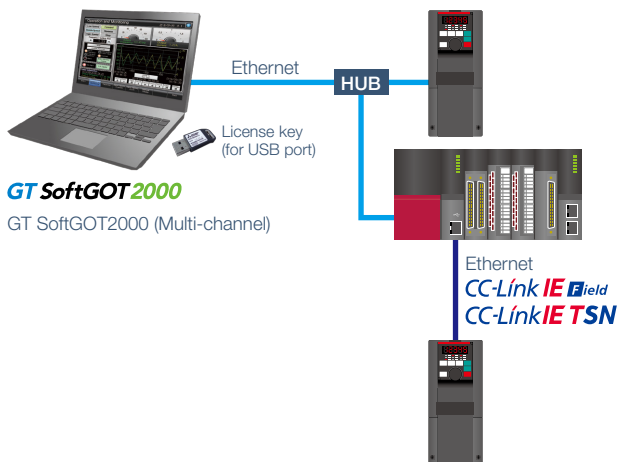


■ GT SoftGOT2000 supported inverter connection NEW

GT SoftGOT2000 now supports connection to inverters, enabling you to monitor inverters and adjust the parameters.

* Sample screens are not supported by GT SoftGOT.

Supported system configuration



Supported models *1

Series	Model
FR-A800	FR-A8□□
	FR-A8□□-E
	FR-A8□□-GF
	FR-A8□□-GN
FR-A800 Plus	FR-A8□□-CRN
	FR-A8□□-E-CRN
	FR-A8□□-R2R
	FR-A8□□-E-R2R
FR-F800	FR-F8□□
	FR-F8□□-E
FR-E800	FR-E8□□-E
FR-E700	FR-E7□□-NE

*1 Supported connection types vary depending on the inverter model. For the details, please refer to the GT SoftGOT2000 Version1 Operating Manual.

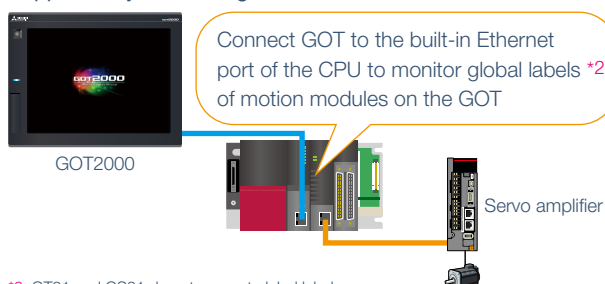
■ Support global labels of motion modules NEW

☒GT27
 ☒GT25
 ☒GT23
 ☐GT21
 ☐GS21
 ☒SoftGOT*1

By connecting to the built-in Ethernet port of MELSEC iQ-R Series programmable controllers, GOT2000 monitors global labels *2 of motion modules that support MELSERVO-J5. Visualizing the latest servo systems with GOT2000 adds value to the equipment.

*1 Only available to GT SoftGOT2000 (Multi-channel).

Supported system configuration



*2 GT21 and GS21 do not support global labels.

Supported models

Series	Model
CPU	R□CPU
	R□ENCPU
Motion module	RD78G4
	RD78G8
	RD78G16
	RD78G32
	RD78G64

NEWS 3

GT Designer3 is easier to use than ever and reduces screen design man hour

■ Consecutive copy Upgraded

Upgraded features of consecutive copy can reduce screen creation time.

Consecutive copy can be used to copy and paste selected figures and objects (switches, lamps, etc.) at a time based on the settings. [Comment Group No.], [Comment No.], [User ID], and [Move Destination ID] have now been added to the increment target to allow for more efficient screen design work.

Previously

The text of the same comment No. was shown because the comment No. was not incremented.

NEW

The comment No. is incremented as well. There is no need to change the setting.

■ Improved Ethernet settings Upgraded

Visibility of the system tree for Ethernet settings has been improved.

In addition, by showing IP addresses used in the project in a list, it is easy to notice setting errors such as address duplication.

Improved visibility by listing controllers and IP addresses in the Controller Setting section of the system tree.

Controller/Setting Name	IP Address	Port No.	Communication	Net No.	Station
GOT IP Address Setting - Standard Port	192.168.3.40				
Multimedia - File Server	192.168.3.40	21			
Network Drive	192.168.3.101				
Printer	192.168.3.100				
RCPU (Used in CH1)	192.168.3.39	5006	UDP		1

*Yellow cell: Overlapping IP address

[IP Address List] docking window

Duplicated IP addresses are notified by changing the color of the cells to yellow.

NEWS 4 Panel Mount HMI Speaker has been released

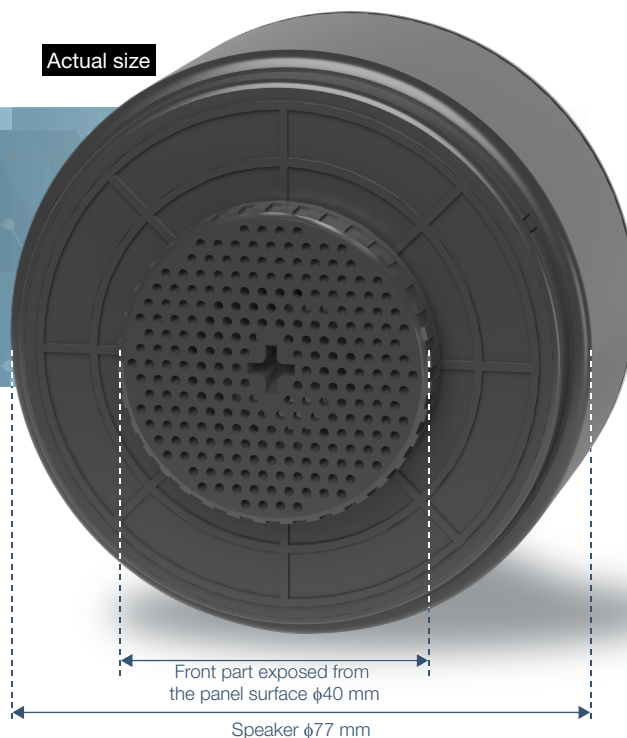
NEW

* Manufactured by MITSUBISHI ELECTRIC ENGINEERING COMPANY LIMITED

A speaker with a built-in amplifier that can be used with GOT2000 or MI3000 has been released. Attaching the speaker from the front and back of the panel completes the installation. Using the speaker with the sound output function of GOT2000/MI3000 makes it easy to build a sound notification system.

✓GT27 ✓GT25 □GT23 □GT21 □GS21 ✓MI3000

MITSUBISHI ELECTRIC ENGINEERING COMPANY LIMITED



Features

Easy and neat to install

Attaching the speaker from the front and back of the panel completes the installation. The speaker and the GOT panel surfaces are at the same level.

Easy to connect

One audio cable connects the GOT and the speaker (with a built-in amplifier).

Rugged

The speaker is suited for use in the factory environment. *1

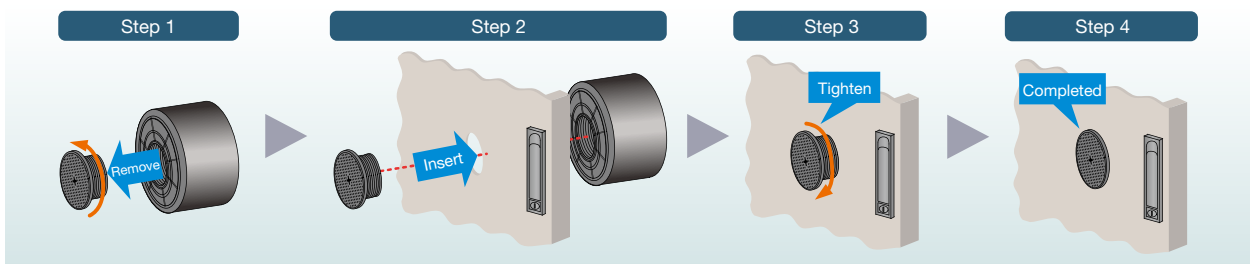
Volume control

The volume can be adjusted in 10 levels (90 dB max.) depending on the worksite environment.

*1 For the details, please refer to "Specifications" (page 7).

Easy and neat to install

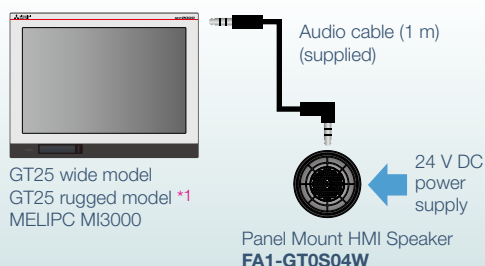
Attach the speaker from the front and back of the panel.



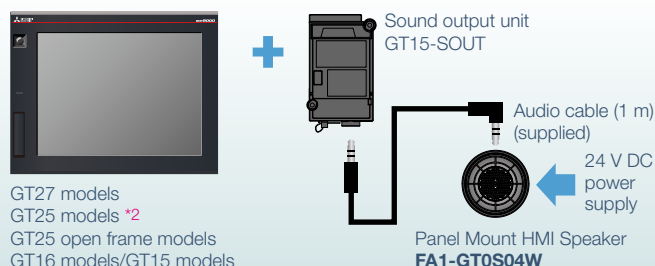
Easy to connect

Easily connectable using the audio cable.

For the GOTs with a sound output interface



For mounting a sound output unit (GT15-SOUT) on the extension interface of the GOT

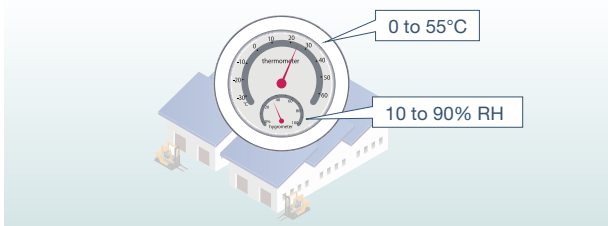


*1 The model can be used within the specification range of the Panel Mount HMI Speaker. For the details, please refer to "Specifications" (page 7).

*2 Excluding GT2505-VTBD and GT25 handy GOT.

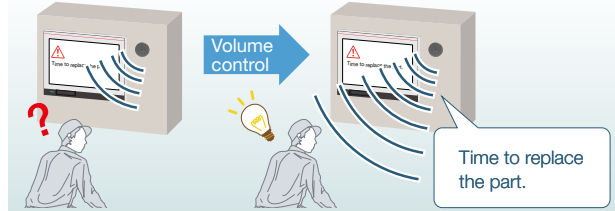
Rugged

Usable at factory temperature and humidity.
(For the details, please refer to "Specifications".)



Volume control

The volume is adjustable in 10 levels (90 dB max.) depending on the noise environment.
(For the details, please refer to "Specifications".)



Specifications *1

Item		Specifications	
Operating ambient temperature		0 to 55°C	
Operating ambient humidity		10 to 90% RH, non-condensing	
Protective structure		IP2X	
Weight		175 g	
External dimensions		Front part exposed from the panel surface: $\phi 40$ mm, speaker (inside the panel): $\phi 77$ mm, depth (inside the panel): 46.3 mm (excluding the power supply connector)	
Installation	Installation hole processing dimensions	$\phi 30^{+0.1}_{-0}$ mm	
	Applicable panel thickness	1.5 to 6 mm	
Power supply	Power supply voltage	24 V DC +20%, -15%	
	Current consumption	0.28 A	
Sound specifications	Input terminal	$\phi 3.5$ minijack	
	Maximum output	3.5 W	
	Sound pressure level	90 dB max. at 1 m *2 Equivalent to the noise of railroad underpasses	
	Volume control	10 levels (Use the rotary switch of the speaker.)	
Connectable models	GOT2000 Series	GT25 wide models with a built-in sound output interface GT25 rugged model *3 with a built-in sound output interface	
	GOT1000 Series	GT27 models, GT25 models *4, GT25 open frame models	Sound output unit (GT15-SOUT) needs to be mounted on the extension interface.
		GT16 models, GT15 models	
	MELIPC Series	MELIPC MI3000 with a built-in sound output interface	HDMI splitter with an aux. port needs to be connected.
		MELIPC MI5000, MI1000	

*1 For detailed specifications, please refer to the user's manual of the speaker. For the user's manual, please contact your local sales office of MITSUBISHI ELECTRIC ENGINEERING COMPANY LIMITED.

*2 For GT25 wide models: The sound pressure level varies with the sound source and usage environment.

*3 The model can be used within the specification range of the Panel Mount HMI Speaker.

*4 Excluding GT2505-VTBD and GT25 handy GOT.

Product

Product name	Model	Items included in product package
Panel Mount HMI Speaker	FA1-GT0S04W	Speaker, audio cable (1 m), power supply connector, cable clamp, user's manual

* For the details of the product, please contact MITSUBISHI ELECTRIC ENGINEERING COMPANY LIMITED.

NEWS 5 Enhanced password security that supports FDA 21 CFR Part 11

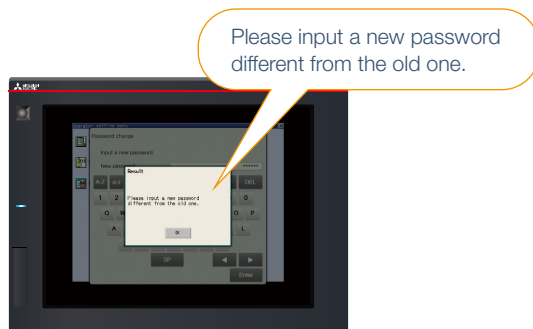
Enhanced passwords in the operator authentication Upgraded

✓GT27 ✓GT25 ✓GT23 □GT21 □GS21 ✓SoftGOT

The operator authentication function has been improved to further support FDA 21 CFR Part 11, which is a standard for electronically recording the traceability information required in the food and pharmaceutical industries.

A new function has been added to prohibit the setting of passwords that were used in the past. By disabling the use of the passwords that are saved in history, it is possible to ensure security and prevent impersonation when passwords are compromised.

* The number of password histories can be set from 0 to 5. Setting 0 disables the function.



GOT2000

Graphic Operation Terminal

The release date varies depending on the product and your region. For details, please contact your local sales office.

The actual color may differ slightly from the pictures in this catalog.
The actual display may differ from what are shown on GOT screen images.

Precautions for safe use

To use the products given in this publication properly, always read the relevant manuals before beginning operation.

Trademarks and registered trademarks

All product and company names used herein are either trademarks or registered trademarks of their respective owners.

MITSUBISHI ELECTRIC CORPORATION

HEAD OFFICE: TOKYO BLDG., 2-7-3, MARUNOUCHI, CHIYODA-KU, TOKYO 100-8310, JAPAN
NAGOYA WORKS: 1-14, YADA-MINAMI 5, HIGASHI-KU, NAGOYA, JAPAN

Country/Region	Sales office
USA	+1-847-478-2100
Mexico	+52-55-3067-7512
Brazil	+55-11-4689-3000
China	+86-21-2322-3030
Taiwan	+886-2-2299-2499
Korea	+82-2-3660-9569

Singapore	+65-6473-2308
Thailand	+66-2092-8600
Indonesia	+62-21-3192-6461
Vietnam	+84-28-3910-5945
India	+91-20-2710-2000
Australia	+61-2-9684-7777

Germany	+49-2102-486-0
UK	+44-1707-28-8780
Italy	+39-039-60531
Spain	+34-935-65-3131
France	+33-1-55-68-55-68
Czech	+420-255-719-200

Turkey	+90-216-526-3990
Poland	+48-12-347-65-00
Russia	+7-812-633-3497
South Africa	+27-11-658-8100