

iQ Platform-compatible PAC System Recorder

e-Factory

Total maintenance solution



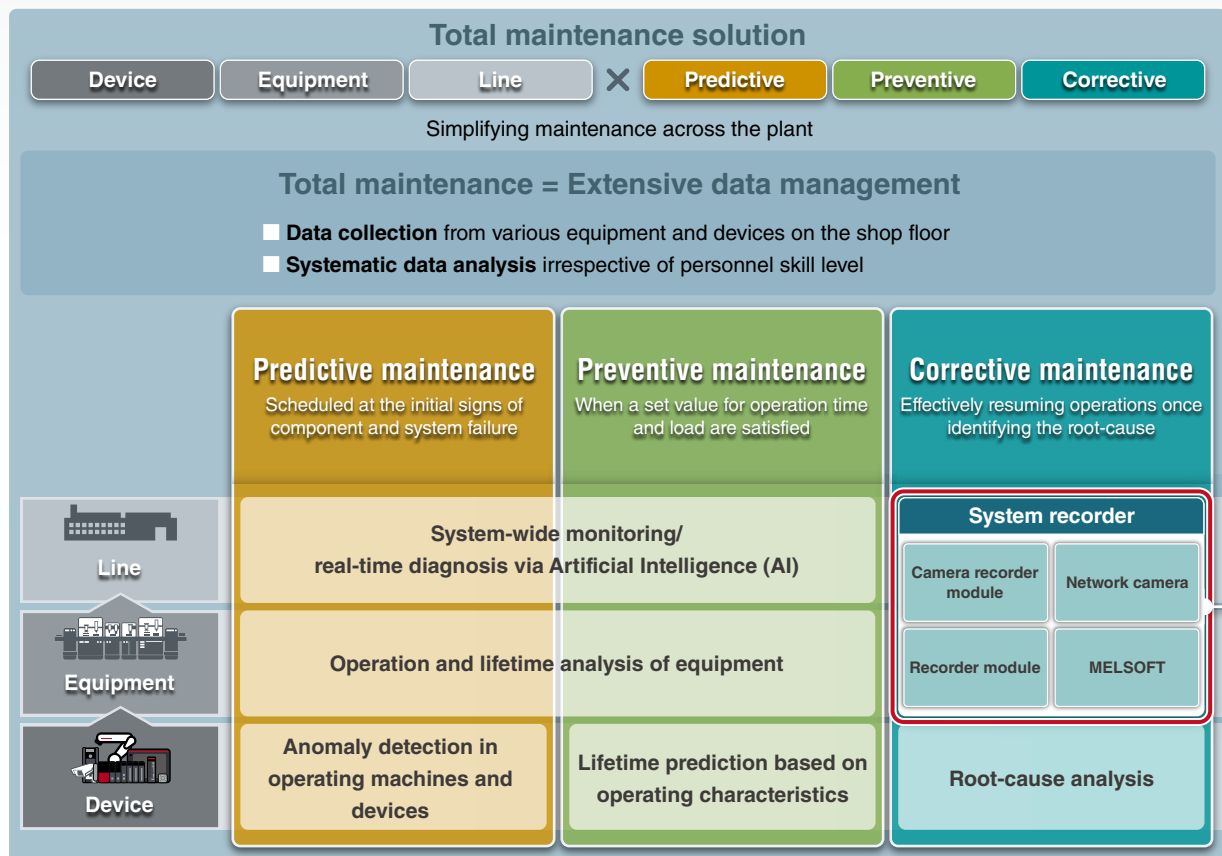
Bringing maintenance data
management to the next level

MELSEC iQ-R
series

Mitsubishi Electric's solution for improving productivity through easier data management

Maintenance is critical for ensuring continuous production. Maintenance includes ① **predictive maintenance** to detect signs of error, periodical ② **preventive maintenance**, and ③ **corrective maintenance** for **prompt troubleshooting** at the time of failure. Mitsubishi Electric proposes an enhanced maintenance solution by recording and sampling production and machine operating data and utilizing this data within various stages of maintenance.

The system recorder is a ③ **corrective maintenance** solution that ensures prompt troubleshooting and error prevention.



| | |
|--|-----------|
| System-wide recording | 4 |
| Control data | 5 |
| Device/label collection every (programmable controller) scan..... | 5 |
| Recording method according to applications..... | 6 |
| Extensive recording trigger settings..... | 6 |
| Automatic saving to file server..... | 7 |
| Record video feeds at the moment an error occurs with network cameras..... | 7 |
| Video data | 8 |
| Optimized focusing on camera subject..... | 8 |
| Support high resolution and long-duration recording..... | 8 |
| Collecting all servo axis data in real-time..... | 8 |
| Co-recording function enables easier error cause identification by recording entire system data within compatible modules*1 NEW | 9 |
| Error cause identification via network across entire system by co-recording compatible modules*1 NEW | 9 |
| Event history | 10 |
| Record event history..... | 10 |
| Record operation log and alarm history..... | 10 |

| | |
|--|-----------|
| Simplified analysis | 11 |
| Log marker function..... | 12 |
| GX VideoViewer Pro GX VideoViewer GX LogViewer GX Works3 | |
| Difference extraction function..... | 12 |
| GX VideoViewer Pro | |
| Offline monitoring..... | 13 |
| GX LogViewer GX Works3 GT Designer3 | |
| Data flow analysis function..... | 14 |
| GX Works3 | |
| Simplified analysis of motion control..... | 14 |
| GX LogViewer | |
| Simplified analysis using panel computer..... | 14 |
| GX Works3 GX LogViewer GT Designer3 GX VideoViewer | |

*1. The recorder module, camera recorder module, and motion CPU module are supported. The motion module will be supported in the future.

System recorder

The system recorder is a corrective maintenance solution that ensures effective resumption of operations reducing downtime through its extensive system-wide data recording and simplified analysis software features.

System-wide recording and simplified analysis

System-wide recording

■ Extensive recording ensures simpler cause analysis

Error cause identification is made simpler by the extensive recording of various equipment and device data together with a real-time video feed reducing the need for multiple retesting due to insufficient data.

■ System-wide recording

Irregularities between various equipment including control and drive systems together with operations are all linked.

■ Automatic system-wide recording

Recording of errors that can occur outside standard operating shifts.



- A Programmable controller CPU (entire bit, word data, project data)
- B Servo status (command position, actual position, speed, torque)
- C Network camera video feed
- D Display and operation log of GOT (HMI)

Simplified analysis

■ Extensive data shown in the same timeline

Waveform, data, program, operations log, and video feeds are shown in sequence ready for analysis.

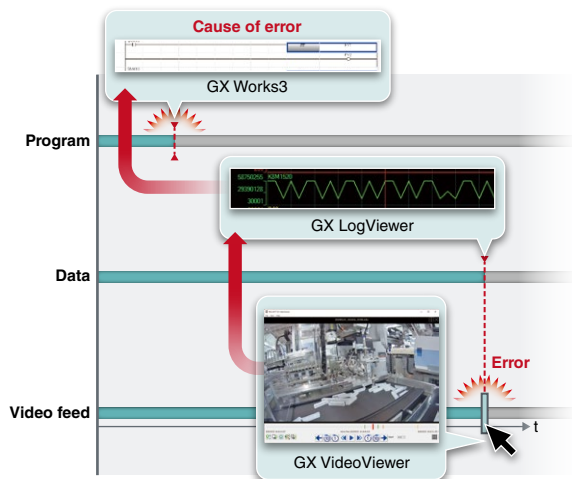
■ Easier cause identification

Data flow analysis makes understanding the root-cause of failures easier by showing the relationship between failed and normal devices.

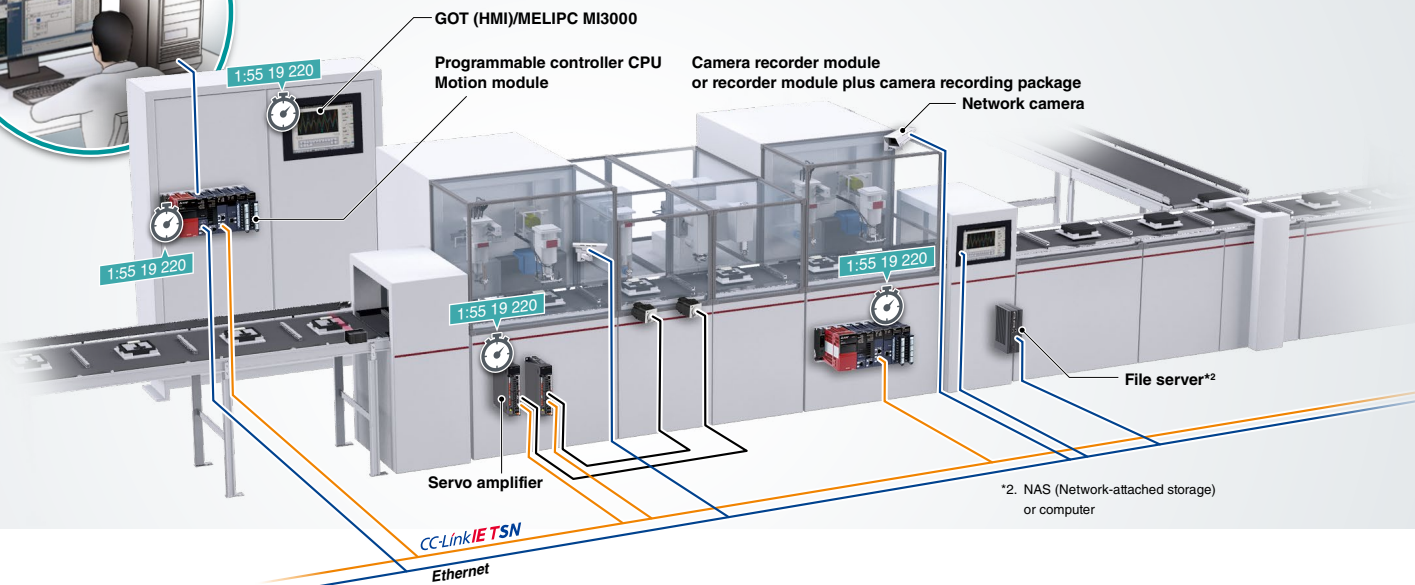
■ Structured program ensures easier troubleshooting

Supports structured programs and device labels enabling easier resolution of problems, thereby reducing TCO*1.

*1. TCO: Total Cost of Ownership



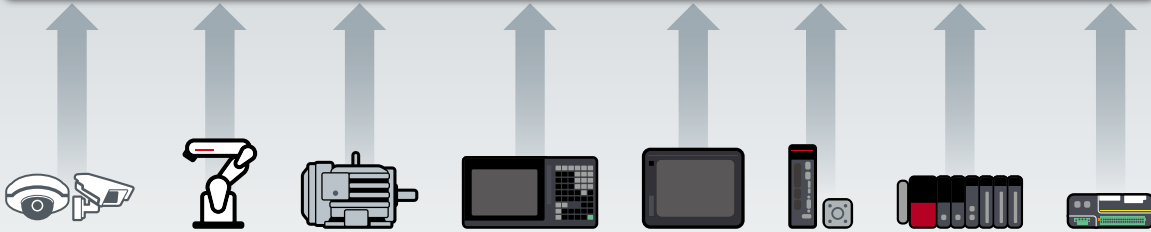
- MELSOFT
 - GX LogViewer
 - GX Works3
 - GX VideoViewer
 - GX VideoViewer Pro
- GT Designer3
- GT SoftGOT2000
- MR Configurator2



*2. NAS (Network-attached storage) or computer

System-wide recording

System-wide total data recording

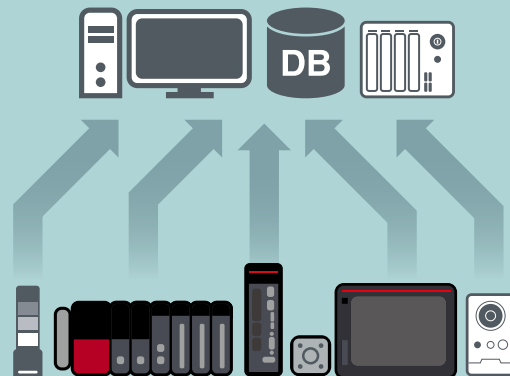


Without the system recorder

- Difficult to identify the error cause from data after an error event. Need to collect as much data as possible for evidence
- Unable to stay to wait for an anomaly that rarely occurs
- When an error occurs, saving video feed is not possible
- One programmable controller CPU data is not enough to solve problems in large and expanding systems

With the system recorder

- Record all device/label per programmable controller scan
- Video feeds can also be recorded with easy and extensive trigger settings
- In addition to devices/labels; motion module/motion CPU module control data, event history from the programmable controller, GOT (HMI) operation history can also be recorded



System-wide recording Control data

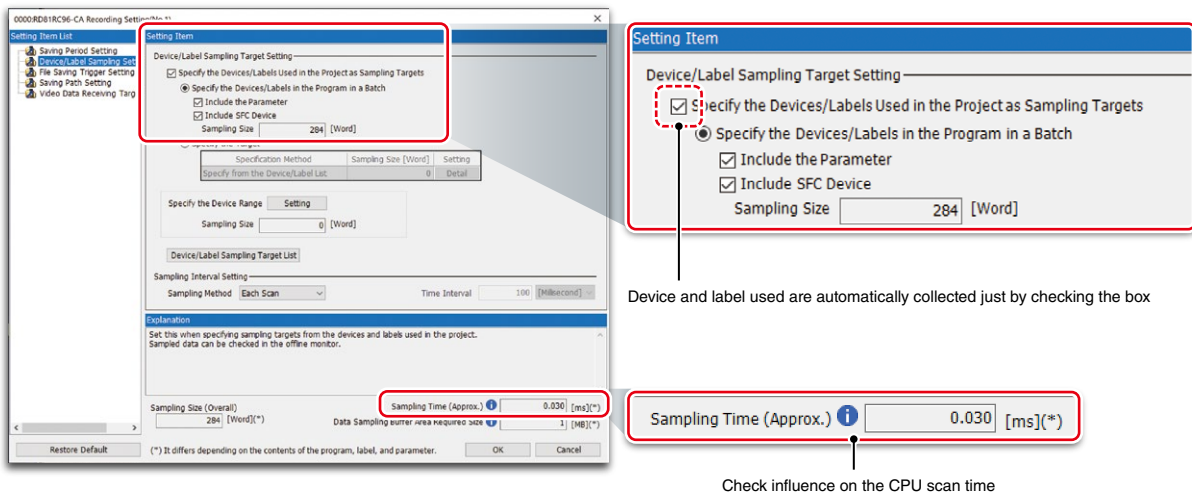
Device/label collection every (programmable controller) scan

① Collecting of all device and label data

- The MELSEC iQ-R Series recorder module and camera recorder module can automatically collect all device and label data per programmable controller scan prior to and after an error event (together with a time-stamp)
- Complete collection of data necessary for analysis ensures simpler error analysis, reducing the recovery time of the control system
- Safety device and label collection are also supported

② Easy setting

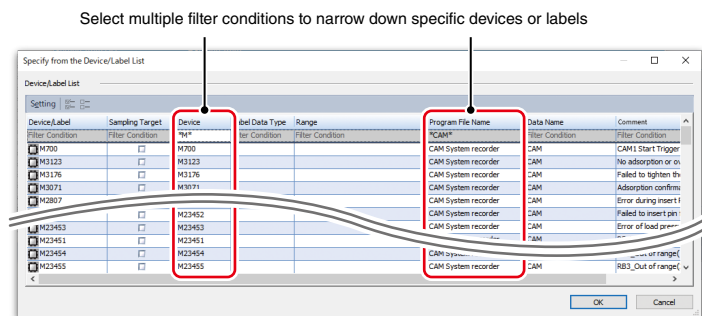
- The recorder module and camera recorder module can be set within the intuitive engineering software GX Works3
- Target device and labels to be recorded are automatically set by checking the box
- Influence on the CPU scan time can be checked



③ Minimal impact on the scan time

- The modules are designed to separate load from the CPU module, minimizing impact to control
- Influence on the CPU scan time is further minimized by filtering of devices and labels
- Collecting targets can be quickly set by narrowing down with filter conditions

| Specifying the collection target |
|----------------------------------|
| Device/label |
| Sampling target |
| Label data type |
| Range |
| Program file name |
| Data name |
| Comment |



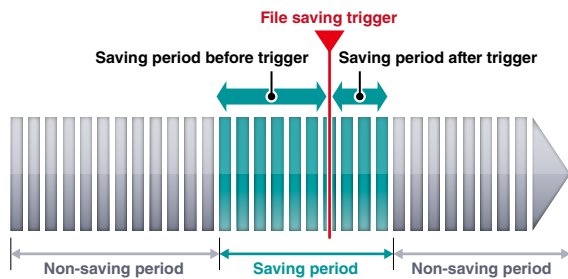
Recording method according to applications

Recording of data prior to and after an error event

- Two saving period settings are available with the MELSEC iQ-R Series recorder module/camera recorder module. In addition to recording of data prior to and after the event, data can be recorded starting from the beginning of the equipment cycle

① Record prior to and after an error event (file saving trigger only)

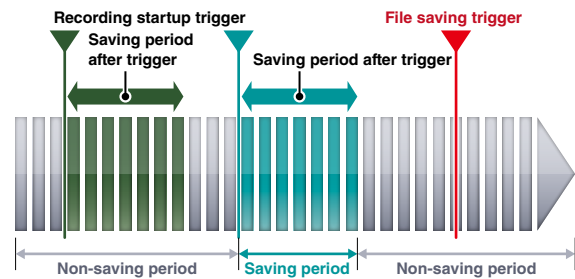
Record data prior to and after a file saving trigger for a specified time. Setting equipment alarm relay as a file saving trigger enables recording of data prior to and after the error event.



- The total of the saving periods before and after trigger can be set within a range from 1 to 86400 seconds
- When the recording buffer capacity is exceeded, the old data is overwritten

② Record equipment cycle (recording startup trigger + file saving trigger)

Record data after a recording startup trigger for a specified time. Setting starting relay of equipment cycle as a recording startup trigger enables recording from cycle start.

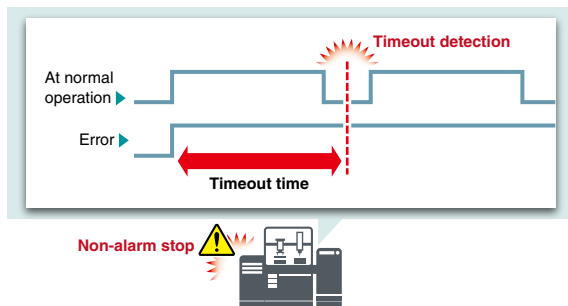


- If recording startup trigger and such are set, data is saved without a file saving trigger
- The previous recording buffer is overwritten per recording startup trigger
- If the data exceeds the recording buffer capacity in a single recording, old data is prioritized and the data exceeding the capacity is discarded

Extensive recording trigger settings

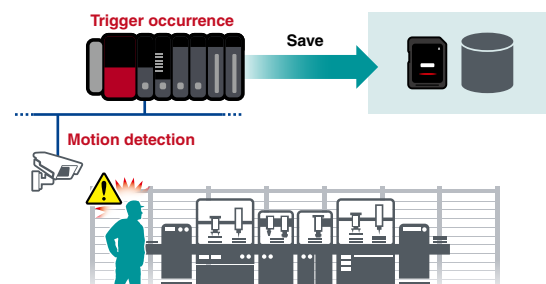
- The recorder module/camera recorder module are available with extensive triggers for recording which can be used according to requirements
- Setting triggers enables non-alarm stop detection and motion detection, errors previously undetectable can now be detected

Non-alarm stop detection



- Active signals are monitored periodically to detect a signal which remains unchanged for a certain period as timeout
- Used to detect a machine that stops without alarm

Motion detection

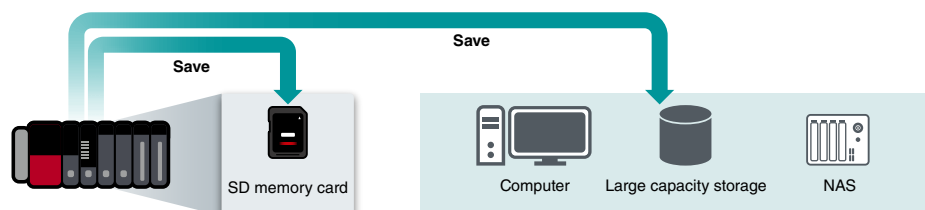


- Monitor equipment and operators with network cameras to trigger when motions are detected

* Motion detection is supported by the camera recorder module only.
* For details of compatible camera, please refer to the technical bulletin (FA-A-0326).

Automatic saving to file server

- As a recording file storage, an SD memory card for the system recorder modules or a file server (such as a NAS or computer) can be selected
- A file server (such as a NAS or computer) can be used as storage for a large capacity data. Remote retrieval of collected data directly from the file server is supported without requiring access on the shop floor

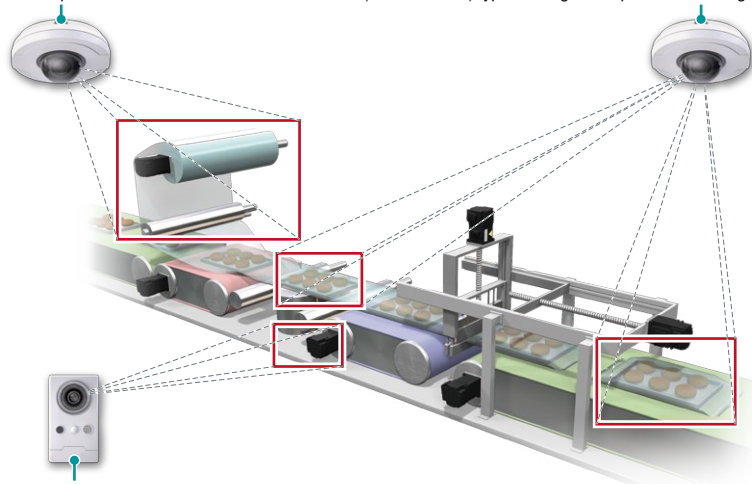


Record video feeds at the moment an error occurs with network cameras

- By supporting available network cameras, the camera recorder module offers a wide choice of functions, specific to an application and installation environment
- Network cameras (such as image resolution, frame rate) can be set within GX Works3 without requiring individual setup

Wide angle/fish-eye lens type:
Enables panoramic view of an entire production line

Optical zoom type: Provides detailed and vivid video feeds
PTZ (Pan-Tilt-Zoom) type: Pre-registered positions allowing multiple areas with a single camera.



Modular type: Installable within control enclosures with limited space
Wireless type: Greater installation flexibility as communication cables are not required

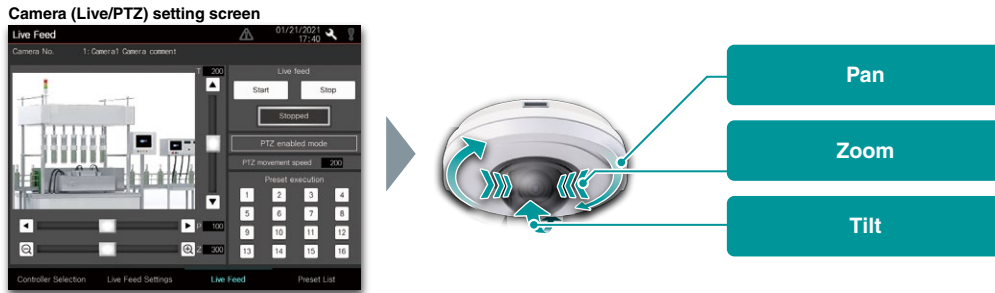
| Installation environment | Applicable cameras |
|--|---|
| <ul style="list-style-type: none"> • Wide-area coverage capturing entire process area • Recording personnel operations | Wide angle/fish-eye lens type |
| <ul style="list-style-type: none"> • Detailed view • Multiple viewing positions | Optical zoom type PTZ (Pan-Tilt-Zoom) type |
| <ul style="list-style-type: none"> • Limited installation space • Difficulty installing communications cabling | Modular type Wireless type |

* For details of compatible cameras, please refer to the technical bulletin (FA-A-0326).

System-wide recording Video data

Optimized focusing on camera subject

- Live image streaming of the network camera on the GOT (HMI) and MELIPC MI3000 and also PTZ (Pan-Tilt-Zoom) control are possible
- Machine movement can be checked from the GOT (HMI) and MELIPC MI3000
- Fine adjustments are supported while monitoring the live video feed on the shop floor



Support high resolution and long-duration recording

- The system recorder stores high-definition video feeds for a long time using the H.264 codec which compresses the data, making space utilization more efficient
- Since it uses a general-purpose video format, there is no need to move or process the storage location of the video file. In addition, recorded video feeds can be checked instantly by a general video replay software as well as dedicated GX VideoViewer and GX VideoViewer Pro

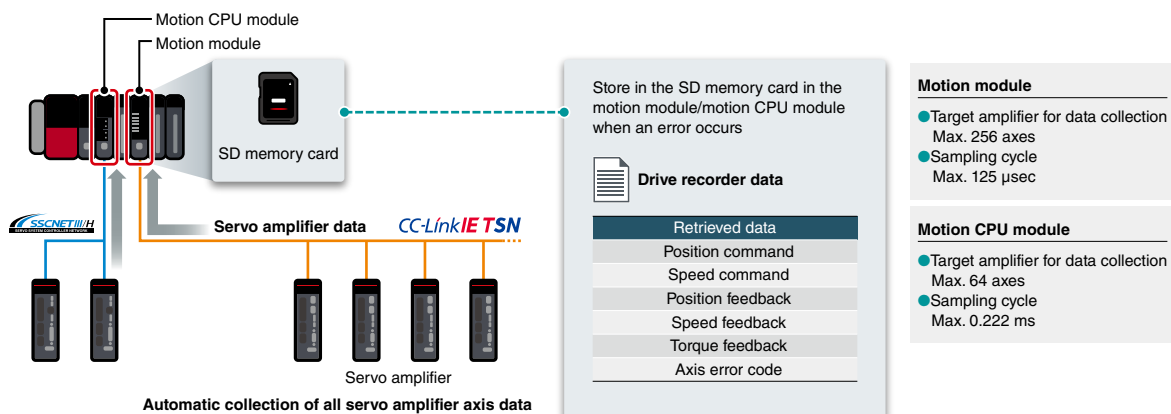
Collecting all servo axis data in real-time

① Recording of positional data from servo

- Servo systems tend to operate at a much faster cycle time compared with a programmable controller making it difficult to capture. Control data of the motion CPU module and motion module can be recorded with a time-stamp
- Detailed positional data from the servo can be recorded

② Automatic collection without requiring a program

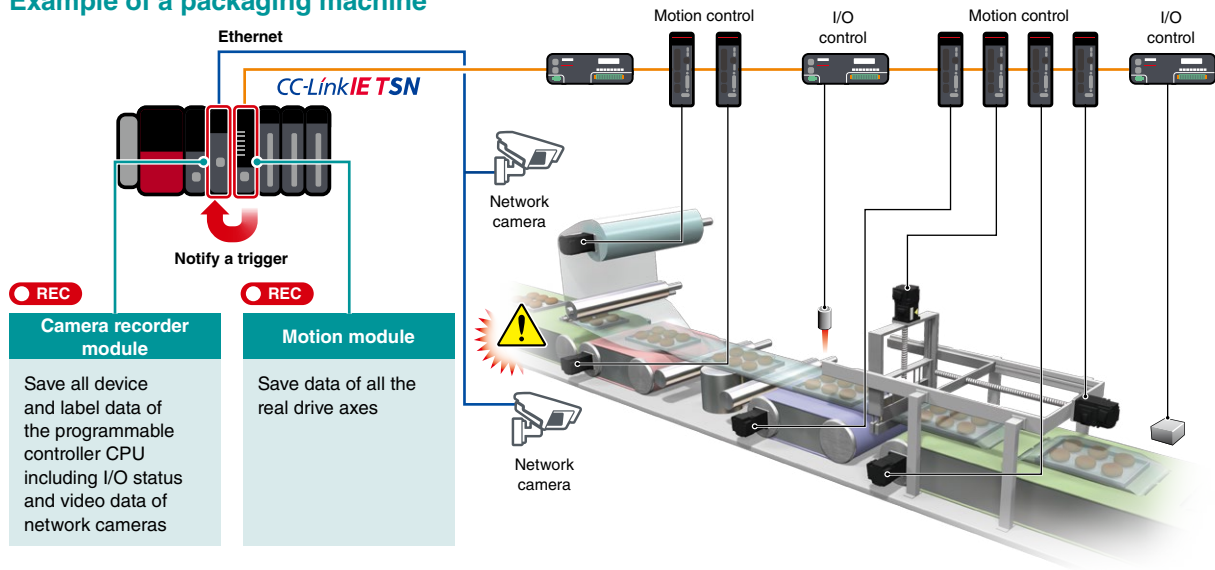
- Simple parameter settings enable the data collection without programming
- Speed/torque/positional data of the MELSERVO-J5/MELSERVO-J4 Series servo amplifier connected with the MELSEC iQ-R Series motion module/motion CPU module are automatically collected as logging data when an error occurs
- Data with a time-stamp is saved in the SD memory card of the motion module/motion CPU module



Co-recording function enables easier error cause identification by recording entire system data within compatible modules*1 NEW

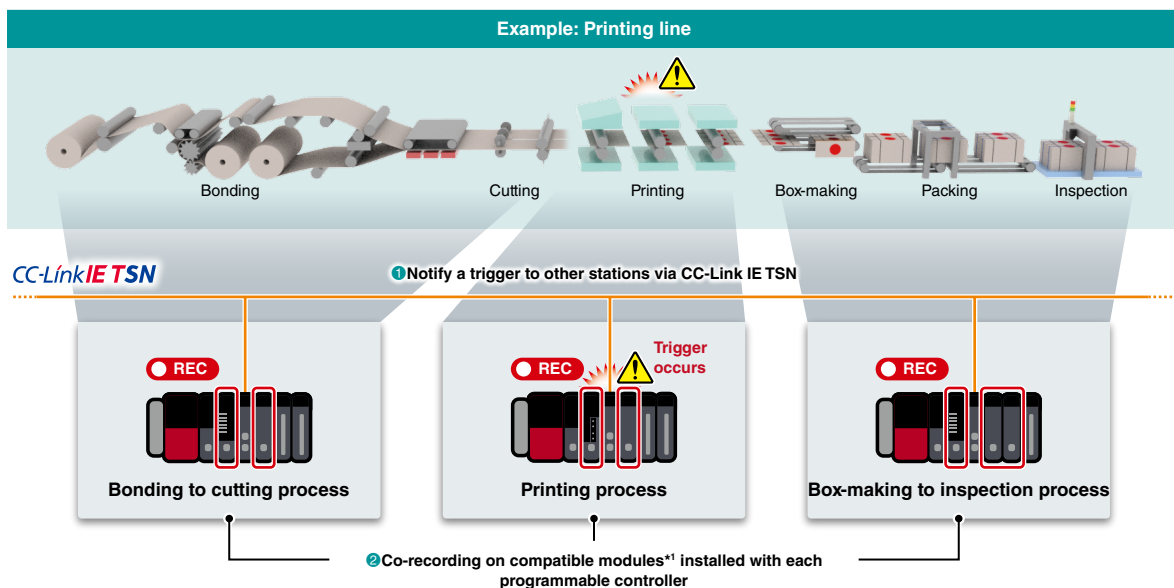
- When any of the compatible modules*1 detects an error, all data recorded in the system is saved at the same time
- By comparing the control data for each module and video feeds when an error occurs, the error cause within multiple devices can be easily analyzed

Example of a packaging machine



Error cause identification via network across entire system by co-recording compatible modules*1 NEW

- Errors detected by any of compatible modules*1 are notified to other stations via CC-Link IE TSN
- Even in a large-scale production line with multiple equipment/processes, error factors across programmable controllers can be easily analyzed by aligning a specific timeline

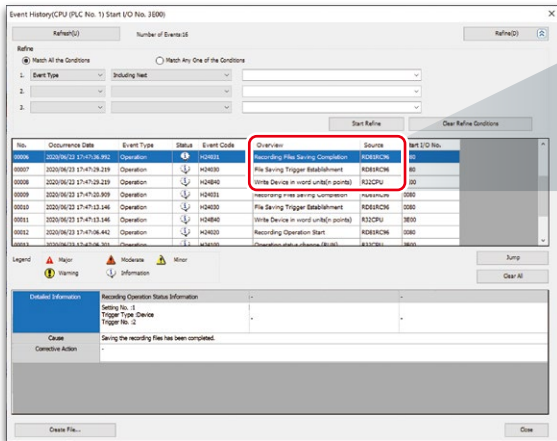


*1. The recorder module, camera recorder module, and motion CPU module are supported. The motion module will be supported in the future.

System-wide recording Event history

Record event history

- Operation from engineering software and device/label operation from external devices can be recorded as historical events
- By analyzing event history with records of device/label changes when an error occurs, an error due to data write from an external device or a mistake with operator's procedure can be checked



| Overview | Source |
|--------------------------------------|----------|
| Recording Files Saving Completion | RD81RC96 |
| File Saving Trigger Establishment | RD81RC96 |
| Write Device in word units(n points) | R32CPU |

| Recorded items |
|---|
| Operation from engineering software |
| Device and label data registration via SLMP*1 Ethernet protocol |
| Device and label data registration using instructions (from other stations or machines) |
| Device and label registration using "Simple CPU communications" (from external device) |

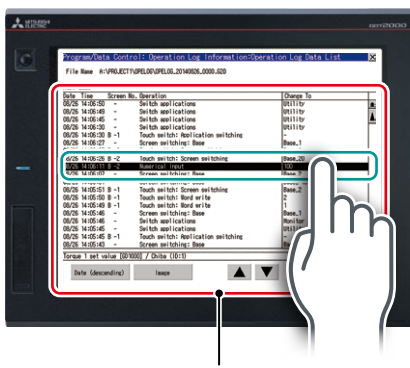
*1. SLMP: Seamless Message Protocol

Record operation log and alarm history

① Easier to identify error cause from operation log

- Operation logs can be recorded as operation log in an SD memory card or USB memory and can be confirmed in the GOT (HMI) or MELIPC MI3000 on the shop floor
- Data such as operation logs and alarm history can be checked on a computer in time-series
- In addition to operator authentication, recording of specific operator logs can be identified easily

Operation log list



Focus on log

Check log profile

Detailed information

Date/time : 06/26/2020 14:06:11
 Function : NUM_VAL
 Numerical Input
 Screen No : Base_2
 Operation : Torque 1 set value
 Operator : Chiba (ID:1)
 User ID : -
 Action No : 1
 Data type : B1N16
 Device : #01000
 Change To : 100
 Change To(Oper.): 100
 Chng From : 10
 Chng From(Disp): 10

Check log details

Check log image



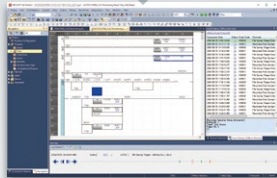
Image (GOT2000)

② Recording of system alarm history

System errors that have occurred are logged in the GOT (HMI) situated on the shop floor. Alarms related to each device with detailed logs showing specific network station number are supported. These features are ideal for large-scale systems.

Simplified analysis

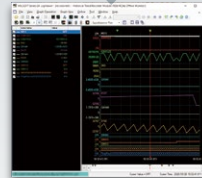
Analysis of recorded data



Program monitoring and event history



Replay the video



Waveform data check



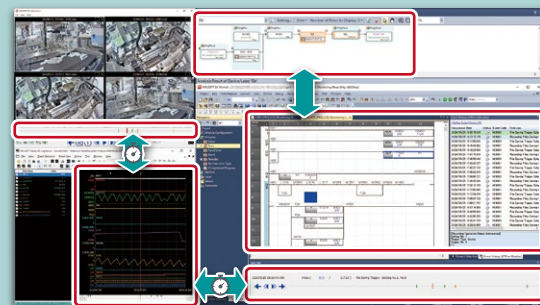
GOT (HMI) display

Without the system recorder

- A lot of data when an error occurs is recorded, but linking data is troublesome
- Difficult to trace a program with varying outputs
- Takes time to understand programs created by others
- Troublesome to find reference points for concerns from a video feed

With the system recorder

- The related video feeds, programs, and devices can be linked to check in the same timeline, allowing easier reproduction of the process at an error
- Analysis of programs created by others is easy as relationships of device values and program can be visualized within the flowchart
- As unusual motion is extracted from a video feed and automatically marked, the reference points for concerns can be narrowed down



Log marker function

Faster cause analysis by synchronized video feed, program and waveform monitoring

1 Register milestone points on the timeline

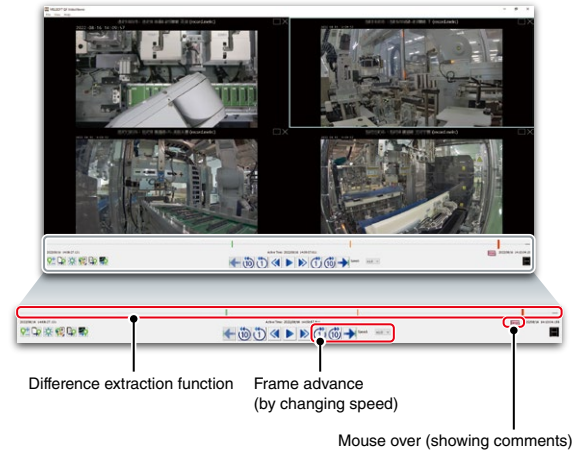
Milestone points (log marker) can be added to the moment when an error occurs. These points can be saved for later use or for distributing amongst other support personnel enabling multiple people even in the remote location to analyze the problem area of the application.

2 Categorize registered milestone points

Log markers can be color-coded according to importance and event type with support of commenting, realizing efficient analysis.

3 Confirming video feed with collected data

After checking the video feed, outputs causing an error and related devices can be tracked as well as programs that change devices. The milestone points (log markers) are synchronized with each software and reproduced at different playback speeds offering a realistic view of the process together with the control data collected.



Difference extraction function



AI technology that extracts differences from the target video by comparing “appearance” and “operation” without deep learning

In addition to the GX VideoViewer functions, differences in a video feed are extracted and marked just with simple setting.

*1. Based on Mitsubishi Electric research as of April 28, 2022

1 Automatically mark differences in the recorded video feed

- Extracts differences in the video feed that differ from normal patterns and adds a mark in the video feed and on the seek bar
- AI analyzes differences of appearance and operation with unique algorithm, enabling easier error analysis
- Significantly reduce the time to find errors and such occurring at a high-speed which cannot follow with the human eye

2 Easy 2-step setting

Automatic extraction by unique algorithms can be set up in 2 simple steps:

- STEP 1** Set camera images of normal operation. (generation of normal pattern)
- STEP 2** Execute difference extraction.

Differences are extracted according to changes in “appearance” and “operation”, then marked on the video feed automatically. The log markers can be synchronized with other software.

| Conventionally | Differences from normal patterns are checked by an operator | Possible differences from normal patterns are automatically extracted |
|----------------|---|---|
| | | <div style="border: 1px solid black; padding: 5px;"> <p>■ : Different area in the video</p> <p>- - - : Different area duration displayed on the seek bar</p> </div> |

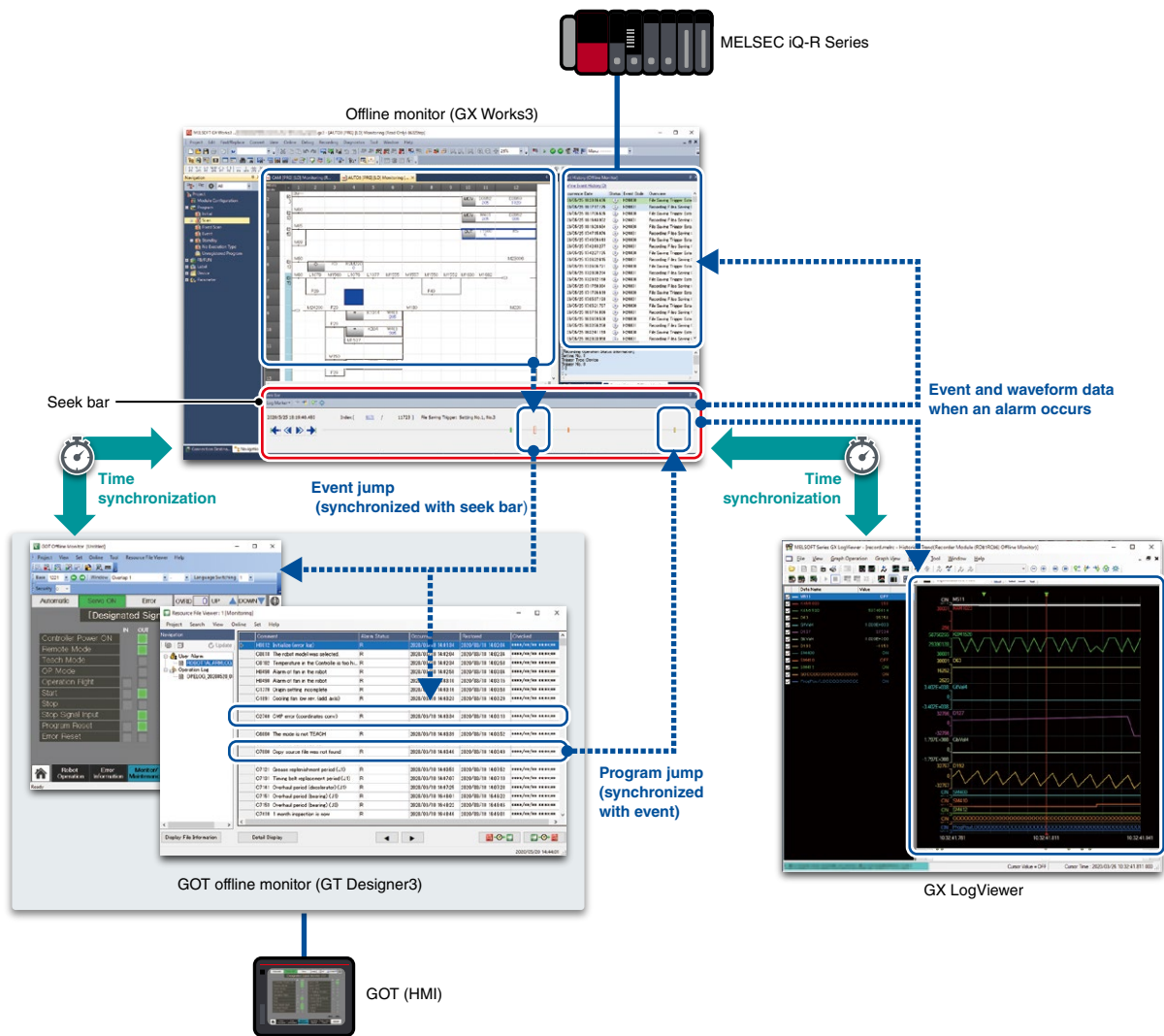
User benefits

Differences are automatically extracted from the recorded video feed, saving labor time in identifying the cause of abnormalities

Offline monitoring

Synchronized playback of program, waveform data, GOT (HMI) (screens, operation logs, alarm history)

- Playback of data can be done very simply just by loading the recorded data into GX Works3, automatically executing all other necessary tools
- Using the “seek bar” enables to jump back and forth within the timeline synchronizing data between GX Works3 program monitoring (circuit monitor), GX LogViewer (waveform display), and GOT (HMI) (screens, operation logs, alarm history)
- Programming languages such as ladder, ST, FBD, and SFC are supported



Data flow analysis function

① Visualize affected area of device/label

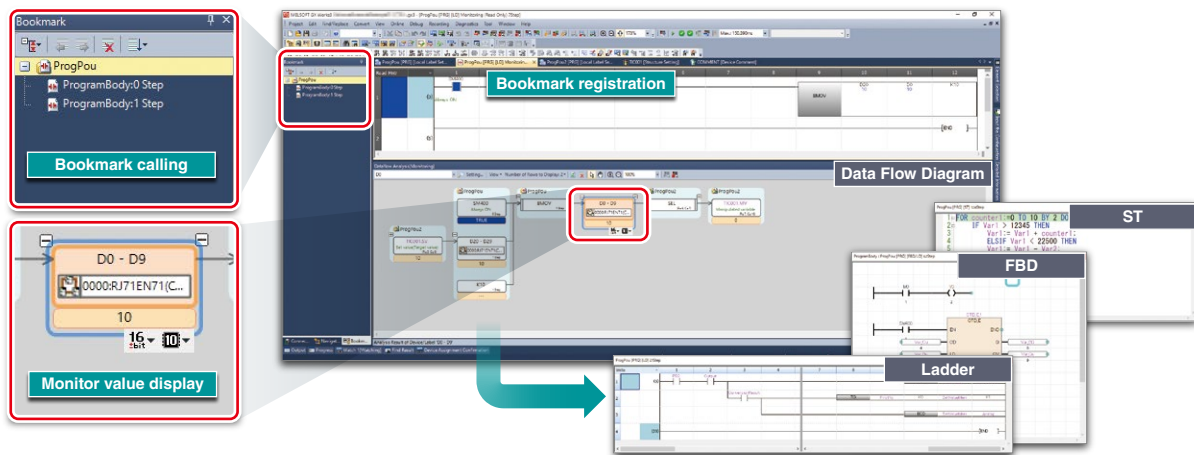
Device and labels together with the affected area can be visualized within the flowchart. The process flow from comments, instruction names, event history, and monitored values can be checked easily identifying the cause of an error.

② Bookmark milestone points

Bookmark milestone points to check speedily.

③ Main program languages supported

Analysis can be done for ladder programs, function block diagram (FBD), SFC (within Zoom) and ST language programs.

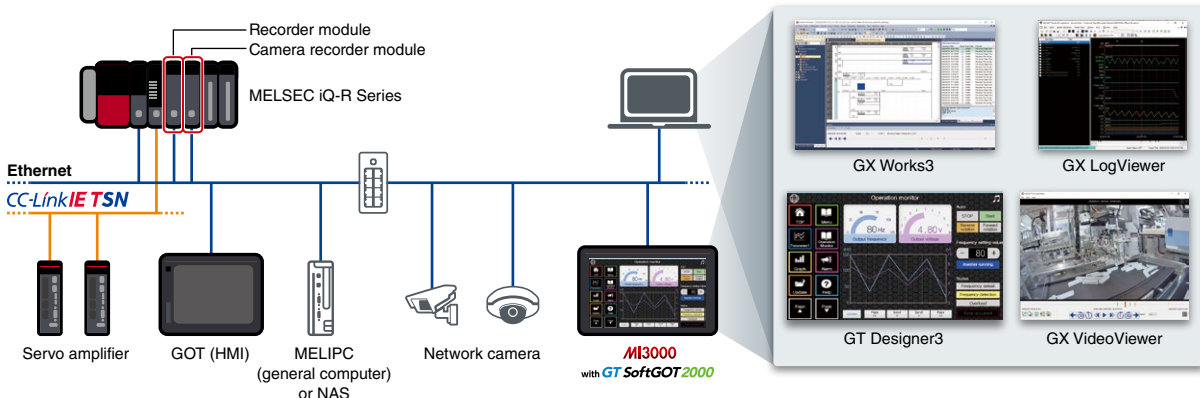


Simplified analysis of motion control

By loading the motion module/motion CPU module data to GX LogViewer, the axis data shown as a waveform can be easily compared with the programmable controller device data for analysis.

Simplified analysis using panel computer

Multiple data can be reproduced on a panel computer such as the MELIPC MI3000 (embedded Windows® OS). Considering the panel computer is situated on the shop floor, various historical alarms and operation logs can be confirmed efficiently at the point where a problem occurs.



System recorder related products specifications

System-wide recording Recording function (device and label collection, image recording)

Recorder module RD81RC96 Camera recorder module RD81RC96-CA

Automatic collection of all device changes per programmable controller scan time

(with time-stamp) prior to and after an error occurs.

- Collect all device/label and event history data
- Easily register device trigger and recording time before and after the event
- Network camera image recording (RD81RC96-CA only)



Recorder module, camera recorder module specifications

| Item | | RD81RC96 | RD81RC96-CA |
|-------------------------------|-------------------|---|---|
| Recording target | | Device/label, event history | Device/label, event history, video data |
| Number of recording settings | | Up to 4 | |
| Recording method | | File saving trigger only, recording startup trigger + file saving trigger | |
| File saving trigger | | Device of the control CPU module (rise, fall, timeout), specified time after completion of data accumulation, control CPU module stop error | Device of the control CPU module (rise, fall, timeout), specified time after completion of data accumulation, control CPU module stop error, camera event |
| Recording startup trigger | | Rise/fall (1 per recording setting) | |
| Sampling method | | Each scan, time specification, trigger instruction, safety cycle time | |
| Number of connectable modules | | One recorder module per control CPU | Four camera recorder modules per control CPU |
| Applicable cameras*1 | Camera type | - | ONVIF® Profile S compliant network camera |
| | Number of cameras | - | Max. 4 per module*2 |
| Storage type | | SD memory card, file server | |
| Compatible CPU module | | R04/08/16/32/120(EN)CPU, R08/16/32/120SF CPU*3 | |

*1. For details of compatible camera, please refer to the technical bulletin (FA-A-0326).

*2. Up to two units when the recording operation setting is "main" and four units when the recording operation setting is "sub." For details, please refer to the relevant product manual.

*3. Compatible CPU modules can be checked from product information. Please refer to System recorder device configuration on P.18 and "MELSEC iQ-R CPU User's Manual (Application) (SH-081264ENG)";

System-wide recording Image recording

Camera recording package*4

Dedicated function blocks (FB) used in combination with the recorder module.

Camera recording package specifications

| Item | | Camera recording package |
|--------------------|----------------------------|---|
| Applicable cameras | Camera | AXIS® COMMUNICATIONS (AXIS®) Network camera*5 |
| | Amount (max.) | RnCPU:16, RnENCPU:64, RJ71EN71:112*6 |
| Save destination | | File server |
| Included item | FB | Time setting, recording direction, virtual input port control |
| | Connection guideline | Commercially available network camera and connection and setup guideline for included FBs |
| Compatible module | CPU embedded Ethernet port | R00/01/02CPU, R04/08/16/32/120(EN)CPU |
| | Ethernet interface module | RJ71EN71 |

*4. For information on obtaining the package, please contact your local Mitsubishi Electric sales office or representative.

*5. For details of compatible camera, please refer to the technical bulletin (FA-A-0306).

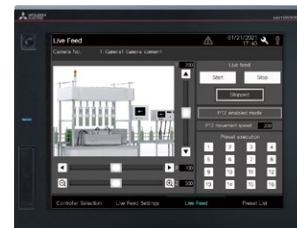
*6. The maximum number of cameras depends on the amount of available connections not used by other devices. For more information, please refer to "MELSEC iQ-R Ethernet/CC-Link IE User's Manual (Startup) (SH-081256ENG)";

System-wide recording Network camera (Live/PTZ) setting screen

■ Camera adjustment on the operation panel*1 MI3000 GOT2000 (GT27, GT25)

Sample screens supporting live image streaming and PTZ adjustment of the network camera via the MELSEC iQ-R camera recorder module are available.

*1. For information on obtaining the sample screens, please contact your local Mitsubishi Electric sales office or representative.



System-wide recording Servo system recorder

■ Motion module

RD78G4 RD78G64
RD78G8 RD78GHV
RD78G16 RD78GHW
RD78G32

■ Motion CPU module

R16MTCPU
R32MTCPU
R64MTCPU

Automatic collection of all servo control system drive axes data from the motion module and motion CPU module when an error occurs. Can be used for easy troubleshooting based on command and feedback values.

- Collect servo system recorder data without programming
- Data collection of all drive system axes
- Compare axis data with other logged data on GX LogViewer



RD78G

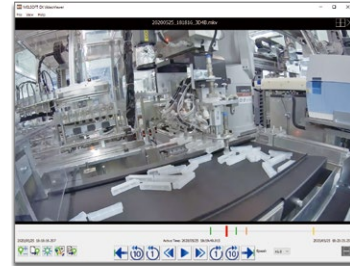
R64MTCPU

Android, Google Play, and Google Play logo are trademarks of Google LLC.
App Store is a service mark of Apple Inc.
Windows is a registered trademark of Microsoft Corporation in the United States and other countries.
AXIS is a registered trademark of Axis AB in various jurisdictions.
ONVIF is a trademark of Onvif, Inc.
QR Code is a trademark or a registered trademark of DENSO WAVE INCORPORATED in JAPAN, the United States and/or other countries.
All other company names and product names used in this document are trademarks or registered trademarks of their respective companies.

■ System recorder related software

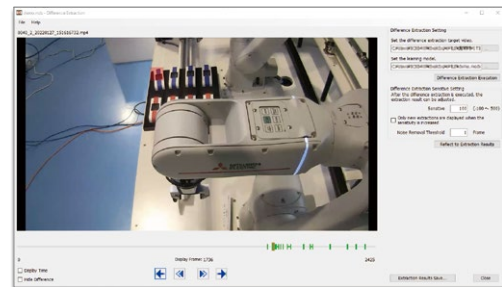
GX VideoViewer

Playback of recorded video up to four screens, while freely playing forward one frame, fast-forwarding, and rewinding. Each video can be linked to check in the same timeline. Color-coded log markers can be added to the video timeline, which is useful for analyzing among multiple personnel and inspection. Log markers are synchronized with related engineering software.



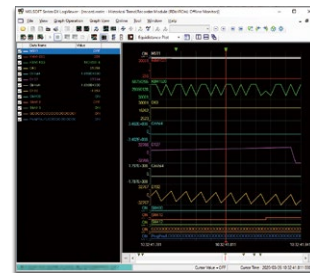
GX VideoViewer Pro

In addition to the GX VideoViewer functions, GX VideoViewer Pro automatically extracts differences in a video feed and easily identify an error cause. Differences in the video feed from normal patterns generated during normal operation are extracted based on “appearance (color, shape, position, etc.)” and “operation (movement amount in unit time);” then log markers are automatically added. The error cause can be easily identified in two steps; model generation and difference extraction.



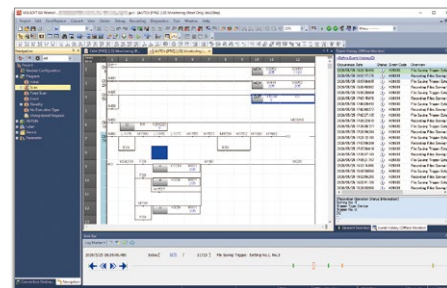
GX LogViewer

GX LogViewer allows observation of device values, which represent quantities that change over time, by zooming in and out of waveforms similar to an oscilloscope. Difference can be checked by superimposing multiple waveforms and observed from repeated patterns and such.



GX Works3

Program steps can be followed and device value changes can be checked by synchronizing the recorded system recorder data with log markers. Data flow analysis visualizes device values and programs affecting the data value change, helping to identify the cause of faults. This can reduce analysis time. Supported programs which synchronize with log markers include not only ladder programs but also function blocks that are easy to follow from the program.



GT Designer3

Screen creation software for GOT (HMI).

GOT (HMI) display/operation log/alarm history can be displayed offline by synchronizing with other applications, making it easier to visualize an error.



* For details on how to obtain the above software, please contact your local Mitsubishi Electric sales office or representative.

System recorder device configuration

Basic configuration

Collecting of all device and label data

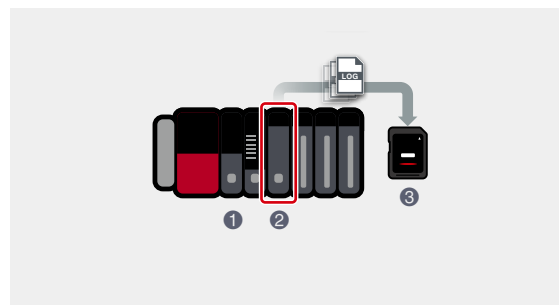
- ① MELSEC iQ-R Series CPU module*1
- ② Recorder module*2
- ③ SD memory card

*1. CPU modules with product information (3rd and 4th digits) stated below support collecting of all device and label data.

| Model | Product information | Model | Product information | Model | Product information |
|---------|---------------------|-----------|---------------------|------------|---------------------|
| R04CPU | "19" or later | R04ENCPU | "32" or later | R08SFPCPU | "05" or later |
| R08CPU | "20" or later | R08ENCPU | "30" or later | R16SFPCPU | |
| R16CPU | "20" or later | R16ENCPU | "27" or later | R32SFPCPU | |
| R32CPU | "17" or later | R32ENCPU | "30" or later | R120SFPCPU | |
| R120CPU | "17" or later | R120ENCPU | "22" or later | | |

For how to check product information, please refer to the "MELSEC iQ-R Module Configuration Manual (SH-081262ENG)"; Module firmware update may be required depending on modules.

- *2. GX Works3 (Ver.1.065T or later) is necessary for recording setting and module setting.
GX Works3 (Ver.1.070Y or later) is necessary when using RnSFPCPU.



Basic configuration + Camera recording package

Collecting of all device and label data and recording instructions to network camera from software

- ① MELSEC iQ-R Series CPU module*3
- ② Network camera*4
- ③ Camera recording package (FB and guideline)
- ④ Recorder module*5
- ⑤ SD memory card or file server (NAS or computer)
- ⑥ PoE switching hub (IEEE802.3at (PoE+) compliant)*6

*3. CPU modules with product information (3rd and 4th digits) stated below support collecting of all device and label data.

| Model | Product information | Model | Product information |
|---------|---------------------|-----------|---------------------|
| R04CPU | "19" or later | R04ENCPU | "32" or later |
| R08CPU | "20" or later | R08ENCPU | "30" or later |
| R16CPU | "20" or later | R16ENCPU | "27" or later |
| R32CPU | "17" or later | R32ENCPU | "30" or later |
| R120CPU | "17" or later | R120ENCPU | "22" or later |

For how to check product information, please refer to the "MELSEC iQ-R Module Configuration Manual (SH-081262ENG)"; Module firmware update may be required depending on modules.

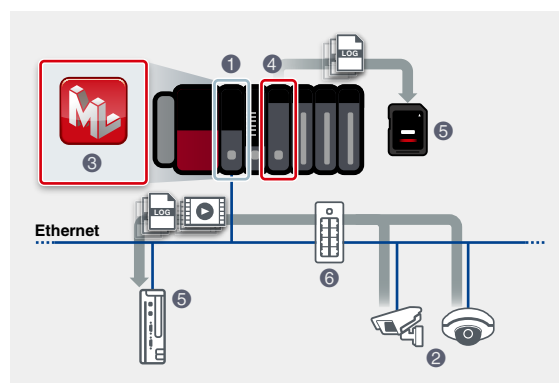
To use camera video recording only, below CPU modules can be used.

- R00/01/02/04/08/16/32/120CPU, R04/08/16/32/120ENCPU (no restriction to product information)
- In addition to the above CPU Ethernet ports, the Ethernet interface module (RJ71EN71) can also be used

*4. For details of compatible AXIS® COMMUNICATIONS (AXIS®) Network cameras, please refer to the technical bulletin (FA-A-0306).

*5. GX Works3 (Ver.1.065T or later) is necessary for recording setting and module setting. GX Works3 (Ver.1.070Y or later) is necessary when using RnSFPCPU.

*6. PoE: Power over Ethernet



Basic configuration + Camera recorder module

Collecting of all device and label data, storage of video data from network camera

- ① MELSEC iQ-R Series CPU module*7*8
- ② Network camera*9
- ③ Camera recorder module*8
- ④ SD memory card or file server (NAS or computer)
- ⑤ PoE switching hub (IEEE802.3at (PoE+) compliant)

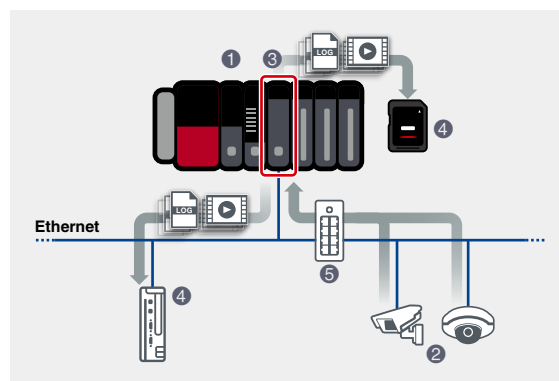
*7. CPU modules with product information (3rd and 4th digits) stated below support collecting of all device and label data.

| Model | Product information | Model | Product information | Model | Product information |
|---------|---------------------|-----------|---------------------|------------|---------------------|
| R04CPU | "19" or later | R04ENCPU | "32" or later | R08SFPCPU | "05" or later |
| R08CPU | "20" or later | R08ENCPU | "30" or later | R16SFPCPU | |
| R16CPU | "20" or later | R16ENCPU | "27" or later | R32SFPCPU | |
| R32CPU | "17" or later | R32ENCPU | "30" or later | R120SFPCPU | |
| R120CPU | "17" or later | R120ENCPU | "22" or later | | |

For how to check product information, please refer to the "MELSEC iQ-R Module Configuration Manual (SH-081262ENG)"; Module firmware update may be required depending on modules.

*8. GX Works3 (Ver.1.072A or later) is necessary for recording setting and module and camera setting (not yet supported).

*9. For details of ONVIF® Profile S compatible network camera and other compatible cameras, please refer to the technical bulletin (FA-A-0326).



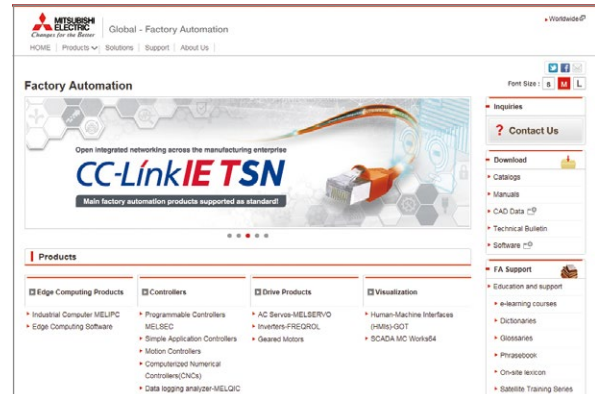
Discover the latest information in Factory Automation

Factory Automation Global website

Mitsubishi Electric Factory Automation provides a mix of services to support its customers worldwide. A consolidated global website is the main portal, offering a selection of support tools and a window to its local Mitsubishi Electric sales and support network.

From here you can find:

- Overview of available factory automation products
- Library of downloadable literature
- Support tools such as online e-learning courses, terminology dictionary, etc.
- Global sales and service network portal
- Latest news related to Mitsubishi Electric factory automation



Mitsubishi Electric Factory Automation Global website:
www.MitsubishiElectric.com/fa

Mitsubishi Electric FA e-Learning

An extensive library of e-learning courses covering the factory automation product range. Courses from beginner to advanced levels of difficulty are available anytime anywhere.



Beginner level

Designed for newcomers to Mitsubishi Electric Factory Automation products gaining a background of the fundamentals and an overview of various products related to the course.

Basic to Advanced levels

Various different features are explained along with setup, programming, and network configuration.

Innovative next-generation e-Manual

A next-generation digital manual that consolidates factory automation products manuals into an easy-to-use package with various useful features.

e-Manual Viewer

Multiple manuals can be cross-searched at once. Multiple users can share the latest manuals and knowhow with document sharing function.



e-Manual Create

Software for converting word files and chm files to e-Manual documents. User's customized machine manuals can be converted to e-Manual documents, allowing consolidated management of user's maintenance information and Mitsubishi Electric product information.

Country/Region Sales office

| Country/Region | Sales office | Tel/Fax |
|----------------|--|--|
| USA | MITSUBISHI ELECTRIC AUTOMATION, INC. 500 Corporate Woods Parkway, Vernon Hills, IL 60061, U.S.A. | Tel : +1-847-478-2100 Fax : +1-847-478-2253 |
| Mexico | MITSUBISHI ELECTRIC AUTOMATION, INC. Mexico Branch Boulevard Miguel de Cervantes Saavedra 301, Torre Norte Piso 5, Ampliacion Granada, Miguel Hidalgo, Ciudad de Mexico, Mexico, C.P.115200 | Tel : +52-55-3067-7512 |
| Brazil | MITSUBISHI ELECTRIC DO BRASIL COMERCIO E SERVICOS LTDA. Avenida Adelino Cardana, 293, 21 andar, Bethaville, Barueri SP, Brasil | Tel : +55-11-4689-3000 Fax : +55-11-4689-3016 |
| Germany | MITSUBISHI ELECTRIC EUROPE B.V. German Branch Mitsubishi-Electric-Platz 1, 40882 Ratingen, Germany | Tel : +49-2102-486-0 Fax : +49-2102-486-7780 |
| UK | MITSUBISHI ELECTRIC EUROPE B.V. UK Branch Travellers Lane, UK-Hatfield, Hertfordshire, AL10 8XB, U.K. | Tel : +44-1707-28-8780 Fax : +44-1707-27-8695 |
| Ireland | MITSUBISHI ELECTRIC EUROPE B.V. Irish Branch Westgate Business Park, Ballymount, Dublin 24, Ireland | Tel : +353-1-4198800 Fax : +353-1-4198890 |
| Italy | MITSUBISHI ELECTRIC EUROPE B.V. Italian Branch Centro Direzionale Colleoni - Palazzo Sirio, Viale Colleoni 7, 20864 Agrate Brianza (MB), Italy | Tel : +39-039-60531 Fax : +39-039-6053-312 |
| Spain | MITSUBISHI ELECTRIC EUROPE, B.V. Spanish Branch Carretera de Rubi, 76-80-Apdo. 420, E-08190 Sant Cugat del Valles (Barcelona), Spain | Tel : +34-935-65-3131 Fax : +34-935-89-1579 |
| France | MITSUBISHI ELECTRIC EUROPE B.V. French Branch 25, Boulevard des Bouvets, 92741 Nanterre Cedex, France | Tel : +33-1-55-68-55-68 Fax : +33-1-55-68-57-57 |
| Czech Republic | MITSUBISHI ELECTRIC EUROPE B.V. Czech Branch, Prague Office Pekarska 621/7, 155 00 Praha 5, Czech Republic | Tel : +420-255-719-200 |
| Poland | MITSUBISHI ELECTRIC EUROPE B.V. Polish Branch ul. Krakowska 48, 32-083 Balice, Poland | Tel : +48-12-347-65-00 |
| Sweden | MITSUBISHI ELECTRIC EUROPE B.V. (Scandinavia) Hedvig Mollersgata 6, 223 55 Lund, Sweden | Tel : +46-8-625-10-00 Fax : +46-46-39-70-18 |
| Russia | MITSUBISHI ELECTRIC (RUSSIA) LLC St. Petersburg Branch Piskarevsky pr. 2, bld 2, lit "Sch", BC "Benua", office 720; 195027 St. Petersburg, Russia | Tel : +7-812-633-3497 Fax : +7-812-633-3499 |
| Turkey | MITSUBISHI ELECTRIC TURKEY A.S. Umraniye Branch Serifali Mah. Kale Sok. No:41 34775 Umraniye - Istanbul, Turkey | Tel : +90-216-969-2500 Fax : +90-216-661-4447 |
| UAE | MITSUBISHI ELECTRIC EUROPE B.V. Dubai Branch Dubai Silicon Oasis, P.O.BOX 341241, Dubai, U.A.E. | Tel : +971-4-3724716 Fax : +971-4-3724721 |
| South Africa | ADROIT TECHNOLOGIES 20 Waterford Office Park, 189 Witkoppen Road, Fourways, South Africa | Tel : +27-11-658-8100 Fax : +27-11-658-8101 |
| China | MITSUBISHI ELECTRIC AUTOMATION (CHINA) LTD. Mitsubishi Electric Automation Center, No.1386 Hongqiao Road, Shanghai, China | Tel : +86-21-2322-3030 Fax : +86-21-2322-3000 |
| Taiwan | SETSUYO ENTERPRISE CO., LTD. 6F, No.105, Wugong 3rd Road, Wugu District, New Taipei City 24889, Taiwan | Tel : +886-2-2299-2499 Fax : +886-2-2299-2509 |
| Korea | MITSUBISHI ELECTRIC AUTOMATION KOREA CO., LTD. 7F to 9F, Gangseo Hangang Xi-tower A, 401, Yangcheon-ro, Gangseo-Gu, Seoul 07528, Korea | Tel : +82-2-3660-9569 Fax : +82-2-3664-8372 |
| Singapore | MITSUBISHI ELECTRIC ASIA PTE. LTD. 307 Alexandra Road, Mitsubishi Electric Building, Singapore 159943 | Tel : +65-6473-2308 Fax : +65-6476-7439 |
| Thailand | MITSUBISHI ELECTRIC FACTORY AUTOMATION (THAILAND) CO., LTD. 12th Floor, SV.City Building, Office Tower 1, No. 896/19 and 20 Rama 3 Road, Kwaeng Bangpongpan, Khet Yannawa, Bangkok 10120, Thailand | Tel : +66-2682-6522-31 Fax : +66-2682-6020 |
| Vietnam | MITSUBISHI ELECTRIC VIETNAM COMPANY LIMITED Unit 01-04, 10th Floor, Vincom Center, 72 Le Thanh Ton Street, District 1, Ho Chi Minh City, Vietnam | Tel : +84-28-3910-5945 Fax : +84-28-3910-5947 |
| Indonesia | PT. MITSUBISHI ELECTRIC INDONESIA Gedung Jaya 8th Floor, JL. MH. Thamrin No.12, Jakarta Pusat 10340, Indonesia | Tel : +62-21-31926461 Fax : +62-21-31923942 |
| India | MITSUBISHI ELECTRIC INDIA PVT. LTD. Pune Branch Emerald House, EL-3, J Block, M.I.D.C., Bhosari, Pune-411026, Maharashtra, India | Tel : +91-20-2710-2000 Fax : +91-20-2710-2100 |
| Australia | MITSUBISHI ELECTRIC AUSTRALIA PTY. LTD. 348 Victoria Road, P.O. Box 11, Rydalmere, N.S.W 2116, Australia | Tel : +61-2-9684-7777 Fax : +61-2-9684-7245 |



Mitsubishi Electric's e-F@ctory concept utilizes both FA and IT technologies, to reduce the total cost of development, production and maintenance, with the aim of achieving manufacturing that is a "step ahead of the times". It is supported by the e-F@ctory Alliance Partners covering software, devices, and system integration, creating the optimal e-F@ctory architecture to meet the end users needs and investment plans.



MITSUBISHI ELECTRIC CORPORATION

HEAD OFFICE: TOKYO BLDG., 2-7-3, MARUNOUCHI, CHIYODA-KU, TOKYO 100-8310, JAPAN
www.MitsubishiElectric.com