

MELSENSOR
Vision Sensor

e-Factory



MELSENSOR 

GLOBAL IMPACT OF MITSUBISHI ELECTRIC



Through Mitsubishi Electric's vision, "Changes for the Better" are possible for a brighter future.

Changes for the Better

We bring together the best minds to create the best technologies. At Mitsubishi Electric, we understand that technology is the driving force of change in our lives. By bringing greater comfort to daily life, maximizing the efficiency of businesses and keeping things running across society, we integrate technology and innovation to bring changes for the better.

Mitsubishi Electric is involved in many areas including the following

Energy and Electric Systems

A wide range of power and electrical products from generators to large-scale displays.

Electronic Devices

A wide portfolio of cutting-edge semiconductor devices for systems and products.

Home Appliance

Dependable consumer products like air conditioners and home entertainment systems.

Information and Communication Systems

Commercial and consumer-centric equipment, products and systems.

Industrial Automation Systems

Maximizing productivity and efficiency with cutting-edge automation technology.

Easily automate inspection and measurement, enabling quality improvement

Mitsubishi Electric vision sensor is light integrated and compact size, realizing “Easy to Use” in various shop floors.



INDEX	03
Vision sensor	04
VS20	06
Configuration tool	10
Applications	12
Product list	13
Specifications	14
External dimensions	16

Powered by
COGNEX

This product is manufactured
by Cognex Corporation.

The vision sensor is the key device in the shop floor that detects data necessary for e-F@ctory in real-time. Mitsubishi Electric vision sensor VS20 is SLMP^{*1}-ready and highly compatible with Mitsubishi Electric factory automation products. Measuring results are seamlessly coordinated with the edge computing level, realizing smooth analysis for reducing TCO^{*2}.

Integrated lighting and compact size

Camera, lighting, and image processing are integrated in a palm sized device.
External lighting and image processing module are not necessary, allowing installation in a constrained space.

Easy installation and intuitive setting

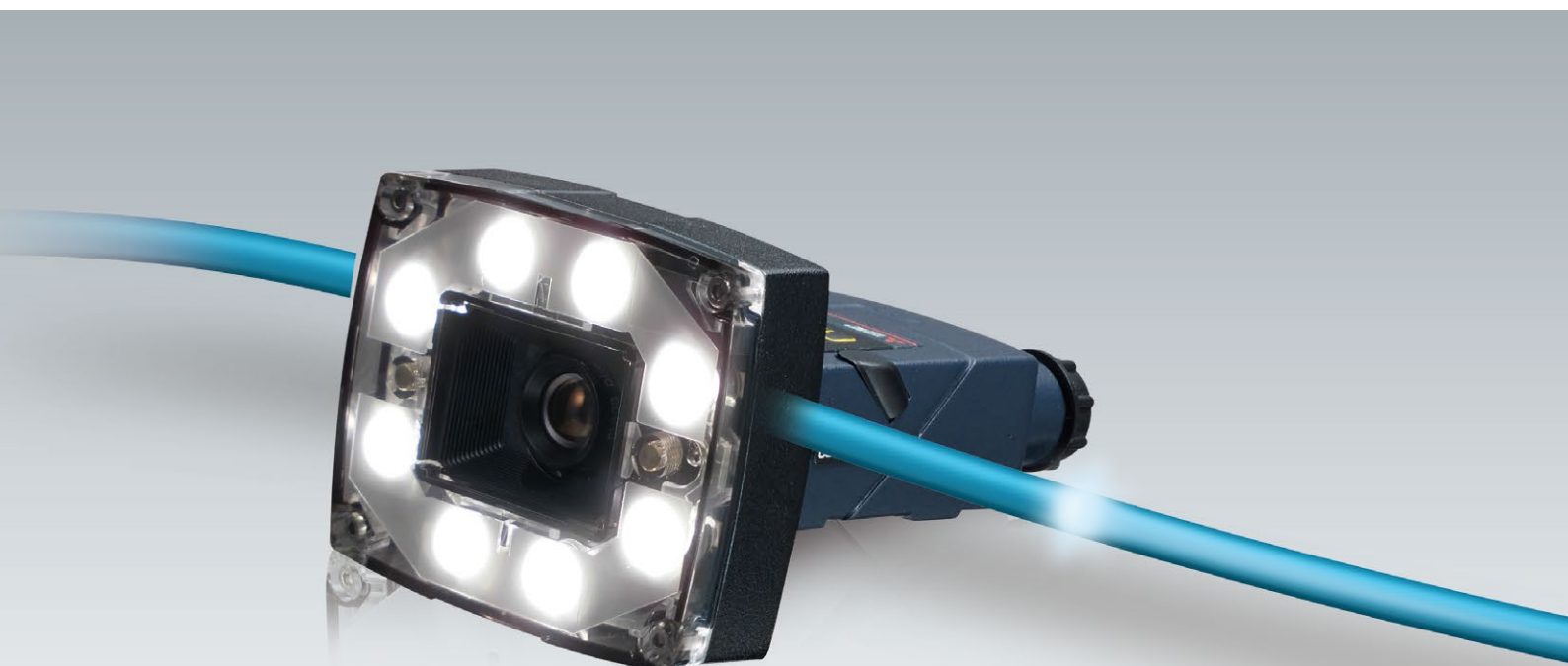
Equipped with a high-intensity LED ring light, setup of an external light is not required. Even novice users can install the vision sensor easily.
Dedicated software enables intuitive engineering, allowing first-time users to configure highly reliable inspection system for different applications.

Highly compatible with Mitsubishi Electric products

With SLMP, the vision sensor can be easily connected with Mitsubishi Electric factory automation products. Recognition images of the vision sensor are transferred to the GOT (HMI) or IT system via an FTP server, realizing traceability by comparing recognition result and recognition image.

^{*1}. SLMP: Seamless Message Protocol

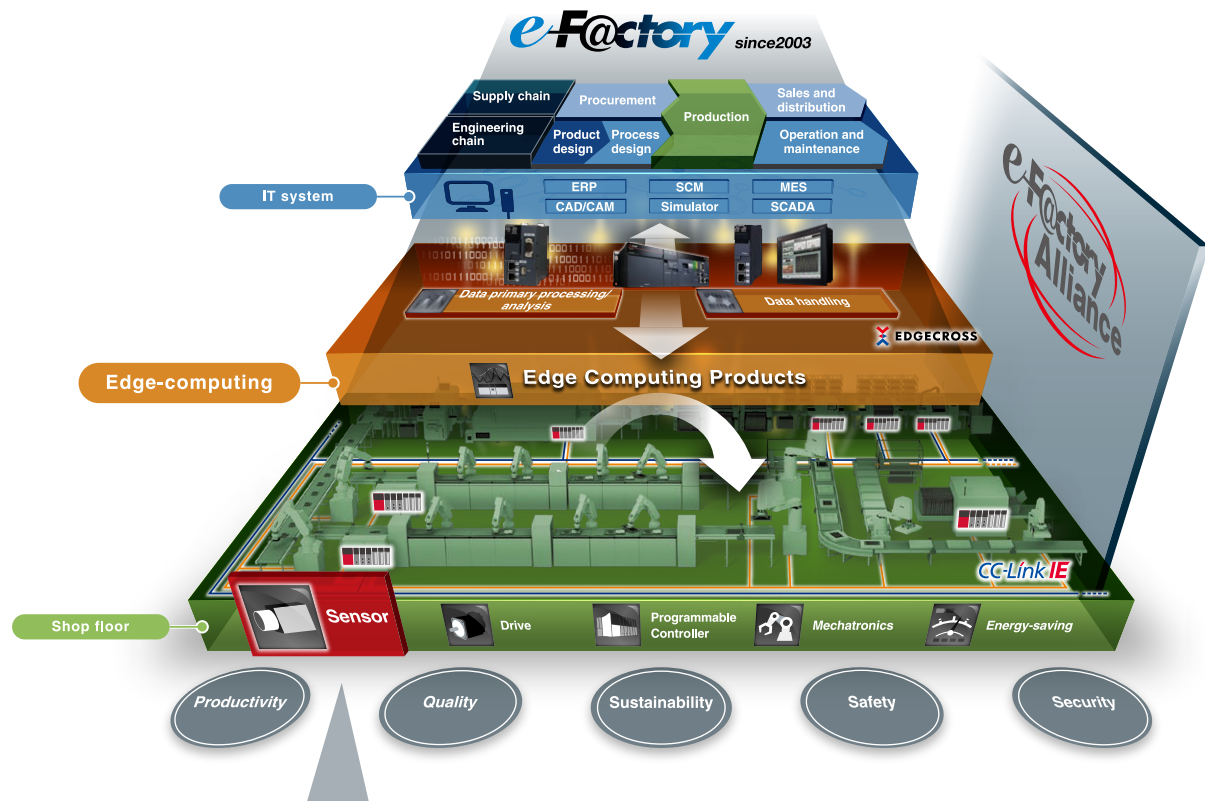
^{*2}. TCO: Total Cost of Ownership



Highly compatible with Mitsubishi Electric
factory automation products

MELSENSOR VS20

e-F@ctory is the Mitsubishi Electric solution for improving the performance of any manufacturing enterprise by enhancing productivity, and reducing the maintenance and operations costs together with seamless information flow throughout the plant by using a combination of factory automation and IT technologies.



Ideal for simple presence/absence inspection

Vision Sensor VS20

- PatMax RedLine®
- Waterproof
- Integrated lighting
- Autofocus



Integrated lighting and filter

High-intensity LED ring light can be fitted to the front of the product, eliminating the need for external lighting. Even novice users can install the sensor easily. Integrated dedicated filter saves the trouble of fitting a filter to the lighting/lens.



Lighting according to measured item characteristics

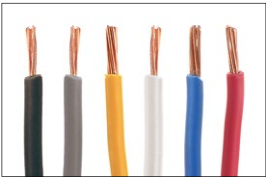
Lighting can be changed according to measured object and color.

Color	Features	General applications
	Visualizes all wavelength except black. Ideal for color camera.	For color verification. For shooting objects traveling at high speed.
	Wavelength highest in sensitivity.	For shooting red objects.
	Visualizes tiny objects with high scattering rate.	For inspecting blue objects. For finding minor defect at high resolution.

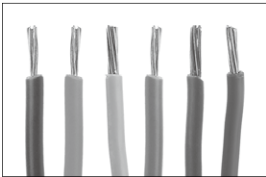


Support color verification

Color sensor model supports presence/absence applications, including color verification.



Color model

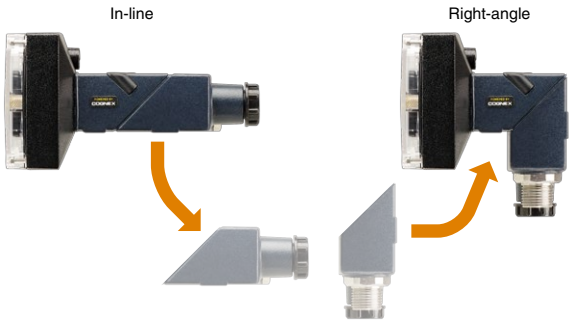


Monochrome model

Field customizable to your applications

Compact palm-sized

Integrated compact size ideal for installation in space-constrained production lines. The design can be changed according to the installation space.



Lens/lighting can be selected according to the operating environment

Lens/lighting can be selected from options according to the system.



Product lineup

Different models according to applications are available.

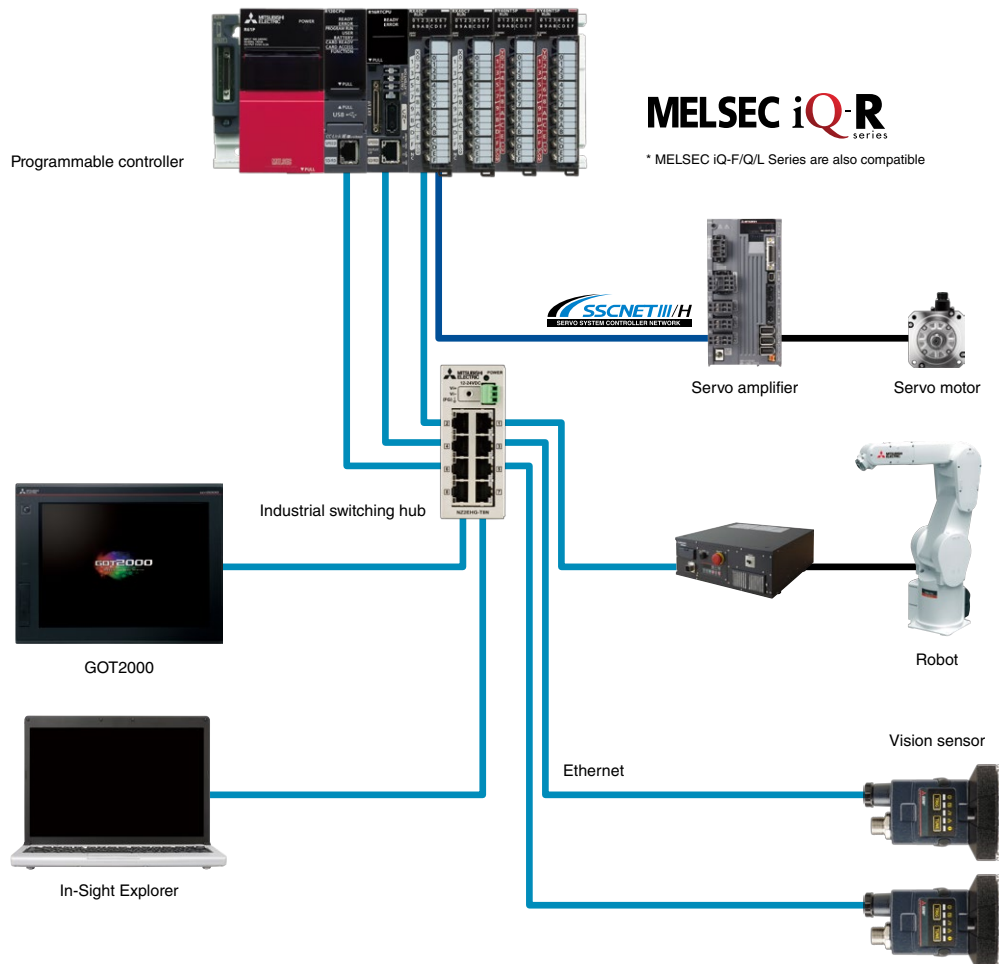
Item		VS20M-11F310	VS20M-12F410	VS20C-12F410	VS20M-13F410	VS20C-13F410
Imagery		Monochrome	Monochrome	Color	Monochrome	Color
Image resolution (pixel)	640 × 480 (standard)	●	●	●	●	●
	640 × 480 (2 × image magnification)	-	●	●	●	●
	800 × 600 (2 × image magnification)	-	-	-	●	●
Maximum image acquisition speed [frame/s]		40	75	55	75	55
Processor performance*1 [Times]		1	2	2	2	2
Location tools	Pattern	●	●	●	●	●
	Edge, edge intersection, and circle*2	-	-	-	●	●
Presence/absence tools	Pattern	●	●	●	●	●
	Color pixel count, brightness, contrast	-	●	●	●	●
	Edge, circle	-	-	-	●	●
Measurement tools	Distance, angle, and diameter of circle	-	-	-	●	●
Counting tools	Pattern, edge	-	-	-	●	●
Communication		SLMP scanner, SLMP, MODBUS®/TCP, TCP/IP, UDP, FTP, Telnet (native mode), RS-232				
I/O		Opto-isolated image acquisition trigger input 1 point, opto-isolated general input 1 point, opto-isolated high-speed output 4 points				

*1. Considering VS20M-11F310 as 1.

*2. Location information detected can be used for inspection by other tools.

Compatibility with Mitsubishi Electric factory automation products

- The vision sensor is compatible with iQSS and SLMP, enabling easier connection to Mitsubishi Electric products such as programmable controllers, robots, and motion controllers.
- Control/monitoring/parameter setting and result acquisition of the vision sensor can be done from the programmable controller.
- Recognition images of the vision sensor are transferred to the GOT (HMI) or IT system via an FTP server, realizing traceability by comparing recognition result and recognition image.



CC-Link IE Field Network Basic compatible Future support

CC-Link IE Field Network Basic interface functions are embedded, realizing high-compatibility with the programmable controller such as easier setup. Setting values and judgment results are acquired via network. In addition, settings of the vision sensor can be checked and changed from the programmable controller.

iQSS compatible

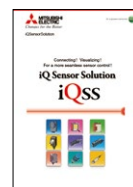
Automatic detection of the vision sensor and linkage with dedicated tools enable reduction in total cost in development/setup/operation/maintenance.

iQSS enables setup and monitoring with engineering tool of the programmable controller

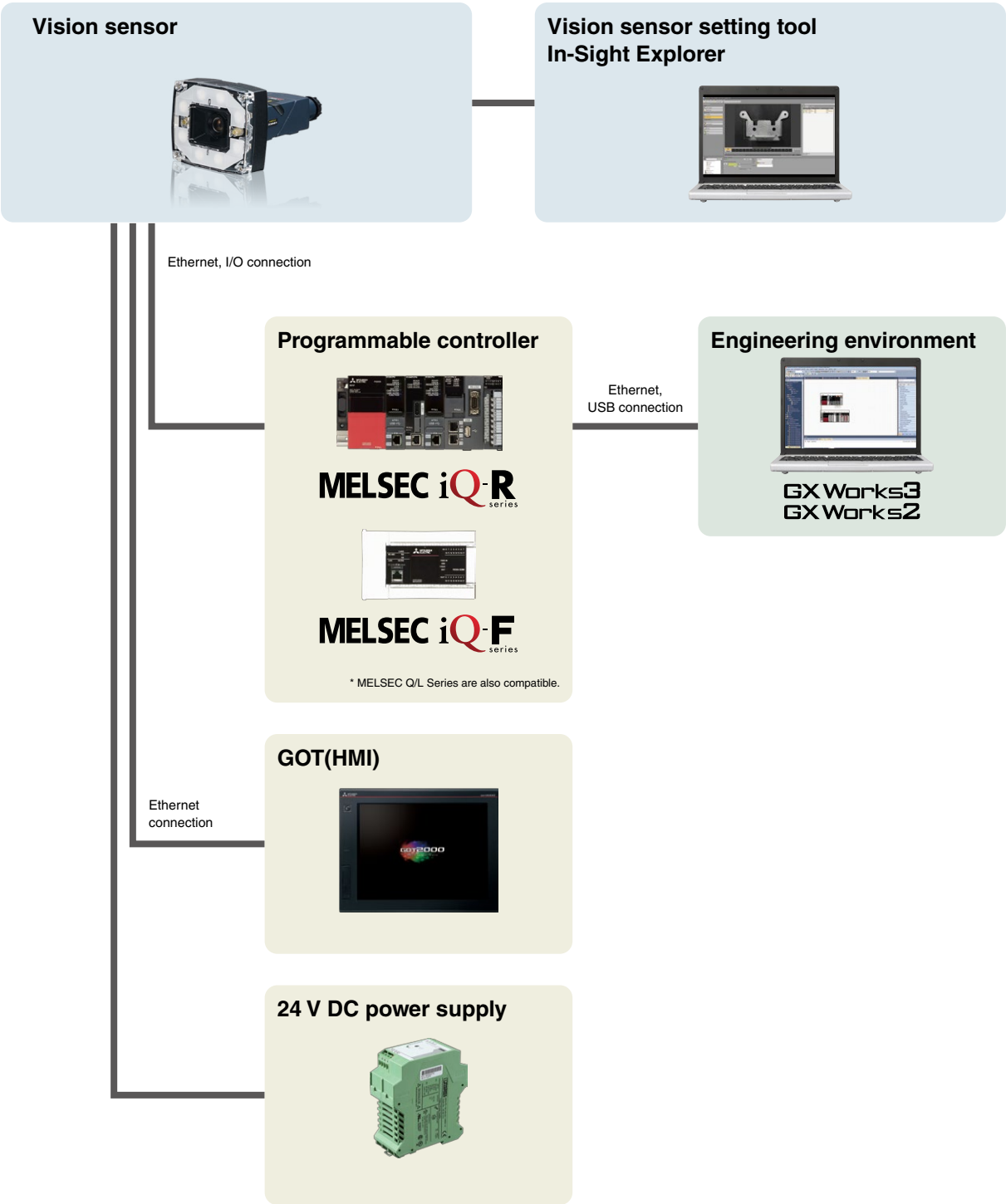
iQ Sensor Solution (iQSS) provides a solution at the sensor level in e-F@ctory.

- Easy setup
- Sensor monitor
- Dedicated tool linkage

For further details,
"iQ Sensor Solution
L(NA)16029ENG"



System configuration



Vision sensor

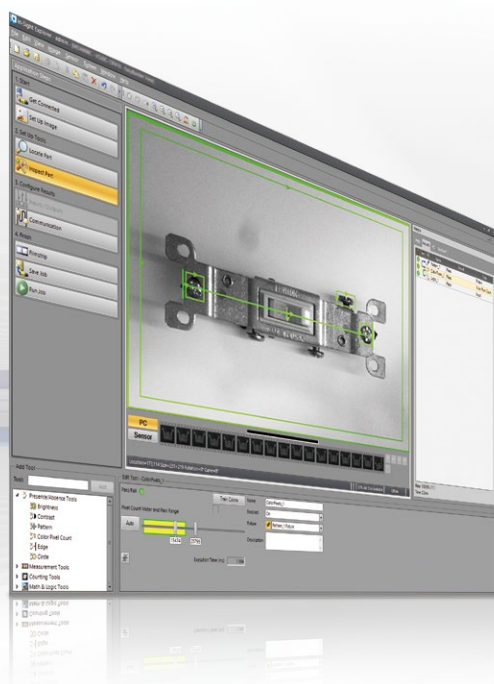
Configuration tool

Applications

Product list

Specifications

External dimensions



High-speed/high-accuracy/
highly-reliable image processing tool
brings innovation to the shop floor

In-Sight Explorer

for MELSENSOR Vision

Quick intuitive setup

Ease-of-use In-Sight Explorer enables configuration from image acquisition to result output in four steps. Both novice and experienced users can handle the tool easily.

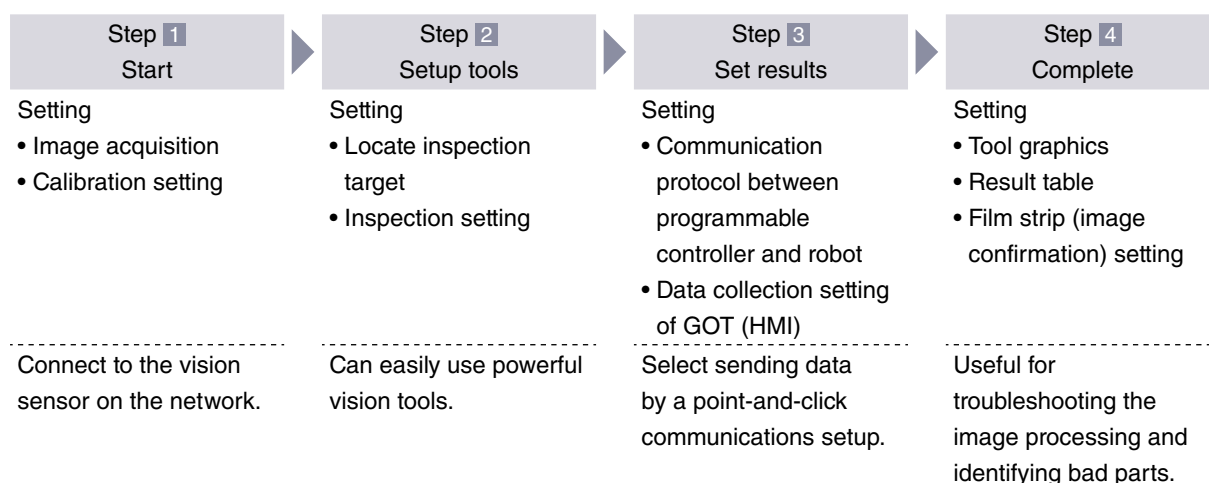
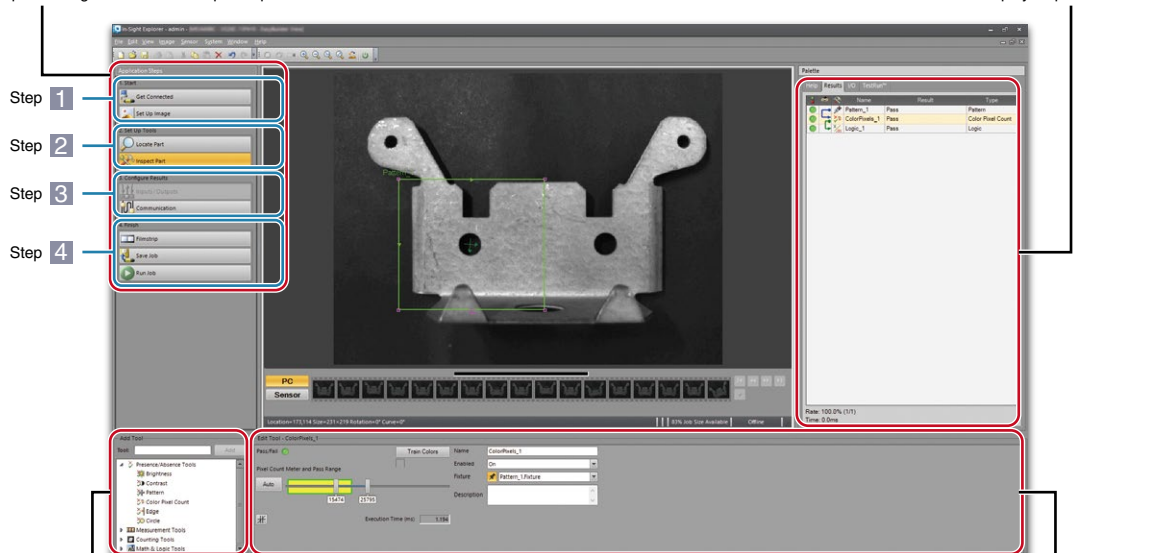


Image processing can be set in simple steps

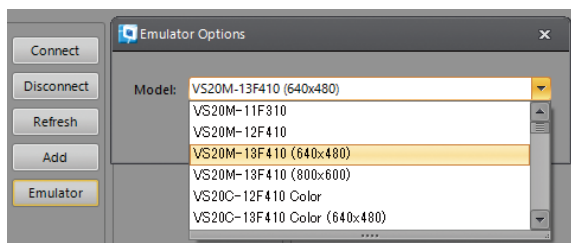


Select tools added to inspection from the list

Point-and-click easy setting

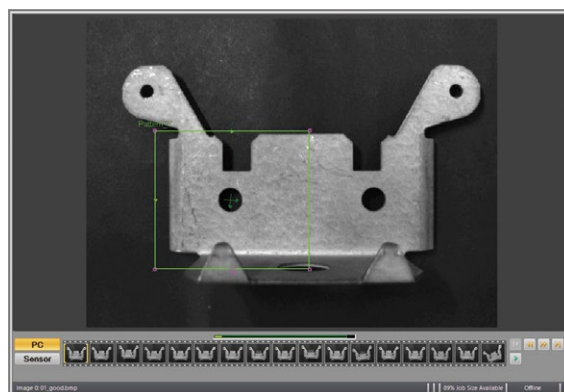
Emulation

Even if a vision sensor is not connected, selecting a vision sensor from the list enables operation check and job creation. If the image of inspection target is available, operation check or job change can be done on the spot.



Film strip

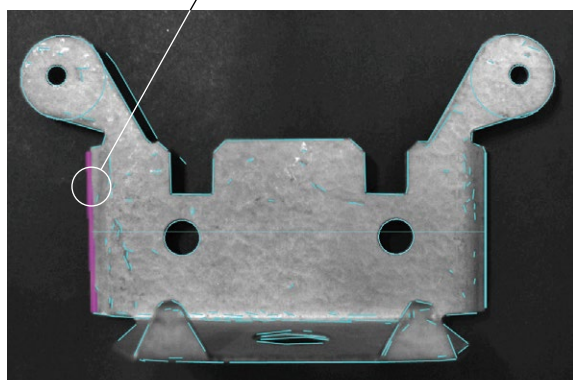
Up to 20 images of inspection history can be stored inside the vision sensor, allowing reference any time without affecting inspection. The images can be stored in the external FTP server also.



Click to specify measurement area

Image processing can be easily configured with intuitive operation as EasyBuilder*¹ automatically extracts possible measurement points.

Simply select possible measurement area automatically extracted with "EasyBuilder"

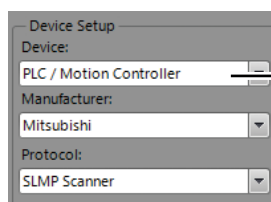


*1. EasyBuilder: Environment where image processing is configured by menu selection without a program

Easy communication setting

Communication with various factory automation products such as programmable controllers, robots, and motion controllers is possible just by selecting a communication target. Communication setting time can be substantially reduced.

Communication target selection



Simply select the connection target device

Communication setting

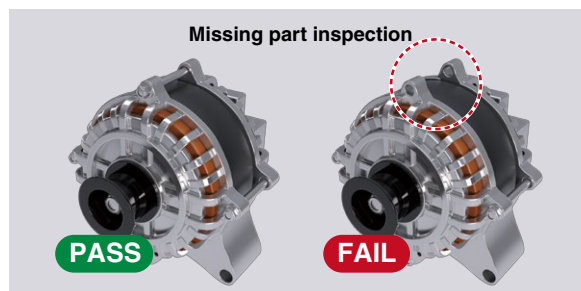


[Download](#) * Free download

URL: www.MitsubishiElectric.co.jp/fa/ref/vs

Vision sensor VS20 is ideal for presence/absence inspection and measurement of the work size.

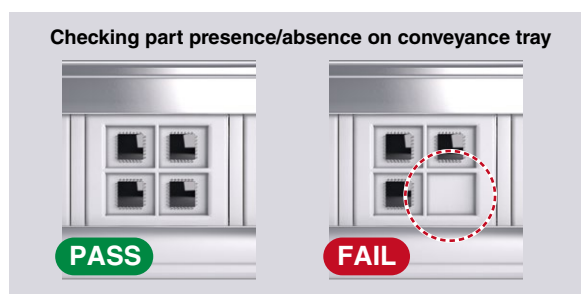
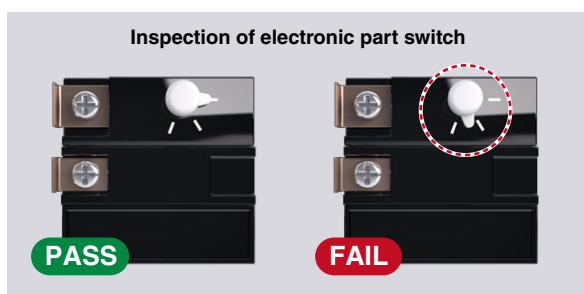
Automotive industry



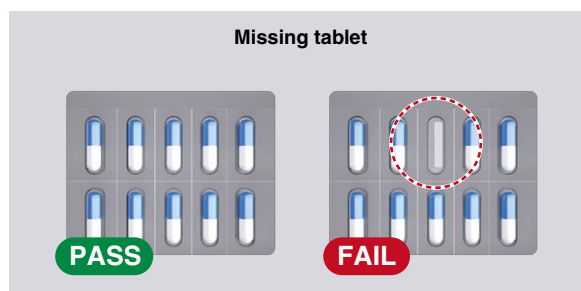
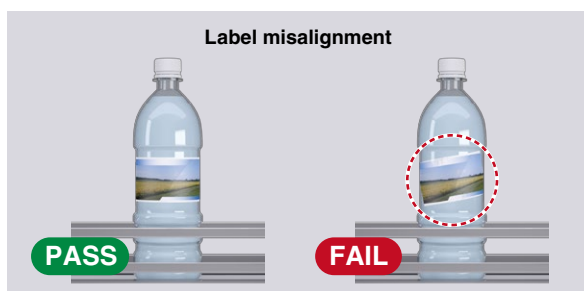
Semiconductor/liquid crystal industry



Electrical/electronics industry



Food/chemical industry



Product list

Vision sensor

Type	Model	Outline
VS20	VS20M-11F310	Monochrome, 640 x 480 (standard), processor performance x 1
	VS20M-12F410	Monochrome, 640 x 480 (standard, 2 x image magnification), processor performance x 2
	VS20C-12F410	Color, 640 x 480 (standard, 2 x image magnification), processor performance x 2
	VS20M-13F410	Monochrome, 640 x 480 (standard, 2 x image magnification)/800 x 600 (2 x image magnification), processor performance x 2
	VS20C-13F410	Color, 640 x 480 (standard, 2 x image magnification)/800 x 600 (2 image magnification), processor performance x 2

Option

*Options are manufactured by Cognex Inc. and other companies.

Product name	Model	Outline
Lens		
S-mount (M12) lens	LM12-03-01	3.6 mm F2.0 fixed aperture lens
	LM12-06-01	6 mm F2 fixed aperture lens
	LM12-08-01-F25	8 mm F2.5 fixed aperture lens
	LM12-12-01	12 mm F1.9 fixed aperture lens
	LM12-16-01	16 mm F2.5 fixed aperture lens
	LM12-25-01	25 mm F2 fixed aperture lens
Spacer		
Lens spacer (M12)	LM12-SPACER-16-01	Use together with 16 mm lens
	LM12-SPACER-25-01	Use together with 25 mm lens
Filter and light cover		
Polarizer	IMPF-2000-POLAR	Polarization plate
Filter	IMRF-2000-BP635	Red bandpass filter
	IMBF-2000-BP470	Blue bandpass filter
	IMIF-2000-BP850	IR bandpass filter
Light cover	IFS-2000-HBRING-CV	Replacement ring light cover
Light		
LED ring light	IFS-2000-HBRING-RD	High-intensity red
	IFS-2000-HBRING-WH	High-intensity white
	IFS-2000-HBRING-BL	High-intensity blue
	IFS-2000-HBRING-IR	High-intensity near infrared
Cable		
Ethernet cable	CCB-84901-2001-02	Cable length 2 m, M12 connector⇔RJ-45 connector, in-line
	CCB-84901-2001-05	Cable length 5 m, M12 connector⇔RJ-45 connector, in-line
	CCB-84901-2001-10	Cable length 10 m, M12 connector⇔RJ-45 connector, in-line
	CCB-84901-2001-15	Cable length 15 m, M12 connector⇔RJ-45 connector, in-line
	CCB-84901-2001-30	Cable length 30 m, M12 connector⇔RJ-45 connector, in-line
	CCB-84901-2002-02	Cable length 2 m, M12 connector⇔RJ-45 connector, right-angle
	CCB-84901-2002-05	Cable length 5 m, M12 connector⇔RJ-45 connector, right-angle
	CCB-84901-2002-10	Cable length 10 m, M12 connector⇔RJ-45 connector, right-angle
Breakout cable	CCB-PWRIO-05(R)	Cable length 5 m, M12 connector⇔12 stranded wires, twisted pair, in-line (right-angle)
	CCB-PWRIO-10(R)	Cable length 10 m, M12 connector⇔12 stranded wires, twisted pair, in-line (right-angle)
	CCB-PWRIO-15(R)	Cable length 15 m, M12 connector⇔12 stranded wires, twisted pair, in-line (right-angle)
Power supply		
Power supply	ACC-24I	24 V DC power supply
Power cord	CBLI-24VDJP	Japanese power cord
	CBLI-24VDUS	North America power cord
	CBLI-24VDUK	United Kingdom power cord
	CBLI-24VDEU	Europe power cord
Mounting bracket		
Mounting bracket	DM100-UBRK-000	Universal mounting bracket
	DM100-PIVOTM-00	Pivot mounting bracket
Plate adapter	BKT-2000-ADAPT-00	Flat surface mounting plate adapter
I/O module		
I/O module	CIO-1400	I/O extension module
I/O module cable	CCB-PWRIO-MOD-02	Cable length 2 m, M12 connector⇔15pin connector (DB15)
	CCB-PWRIO-MOD-05	Cable length 5 m, M12 connector⇔15pin connector (DB15)

Specifications

General Specifications

Item	Specifications
Ambient operating temperature	0...40°C
Ambient storage temperature	-10...60°C
Maximum humidity	Less than 95% RH, non-condensing
Vibration resistance	IEC 60068-2-6: A vibration of 10 G (10 to 500 Hz at 100 m/s ² with 15 mm width) was applied to each X, Y, and Z direction for 2 hours.
Shock resistance	IEC 60068-2-27: 1000 half sinusoidal shocks with 11 G in 10 ms were applied.
Operating atmosphere	There is no danger of corrosive gases, flammable gases, and strong alkaline substances to adhere.
Protective structure	IP65 (when all connectors are attached to cables or shielded by a sealing cap)

Performance Specifications

VS20

Specifications		VS20M-11F310	VS20M-12F410	VS20C-12F410	VS20M-13F410	VS20C-13F410
Memory		32 MB flash memory Unlimited storage when storing in the remote network device Image processing: 128 MB SDRAM				
Imager type		1/3-inch CMOS, 4.80 mm × 3.60 mm (W × H), 3.75 μm sq. pixels				
Imagery		Monochrome	Monochrome	Color	Monochrome	Color
Lens		S-Mount/M12, 8 mm (standard), options: 3.6 mm, 6 mm, 12 mm, 16 mm, 25 mm				
Maximum image resolution (pixels)		640 × 480 (standard)	640 × 480 (standard), 640 × 480 (2 × image magnification mode)		640 × 480 (standard), 640 × 480 (2 × image magnification mode), 800 × 600 (2 × image magnification mode)*1	
Bit depth		256 gray levels (8 bits/pixel)		24-bit color	256 gray levels (8 bits/pixel)	24-bit color
Lighting		Equipped as standard: LED ring light (white), option: LED ring light (red, blue, near-infrared)				
Electronic shutter speed		1μs...1000 ms				
Frames per second*2*3		40 full frames	75 full frames	55 full frames	75 full frames	55 full frames
Power consumption		24 V DC ± 10%, 48 W (2.0 A) maximum when the illumination is ON.				
Trigger		• Opto-isolated image acquisition trigger input × 1				
		• Remote software commands via Ethernet				
		• ON: 15...24 V DC (standard 24 V DC) • OFF: 0...5 V DC (standard 0 V DC)				
	Voltage					
	Current	• 3.6 mA/12 V DC • 7.5 mA/24 V DC				
		• Resistance: Max. 5.48 kΩ				
Discrete inputs		• Opto-isolated general-purpose input × 1				
		• General-purpose input × 7: available when connecting a CIO-1400 I/O module and an I/O module cable*3				
		• ON: 15...24 V DC (standard 24 V DC) • OFF: 0...5 V DC (standard 0 V DC)				
	Voltage					
	Current	• 3.6 mA/12 V DC • 7.5 mA/24 V DC				
		• Resistance: Max. 5.48 kΩ				
Discrete outputs		• Opto-isolated high-speed output × 4				
		• High-speed output × 2, general-purpose output × 6: available when connecting a CIO-1400 I/O module and an I/O module cable				
		28 V DC maximum through external load				
	Voltage					
	Current*4	• ON status: Max. 50 mA (sink or source) • Leakage current in OFF status: Max. 100 μA • External load resistance: 240 Ω to 10 kΩ				
		Each line is rated at a maximum 50 mA and protected against over-current, short circuits, and transients from switching inductive loads. A protection diode is required for a high inductive load.				
Network communication		SLMP scanners, SLMP, MODBUS®/TCP, TCP/IP, UDP, FTP, Telnet (native mode), DHCP (default at shipment from the factory), fixed and link local IP address setting				
Other communications		RS-232 (R × D, T × D (TIA/EIA-232-F compliant))				
Material		Aluminum housing				
Mounting		M3 screw holes × 4				
Dimensions		In-line configuration: 92 mm × 60 mm × 52 mm, right-angle configuration: 62 mm × 60 mm × 67 mm				
Weight		200 g				

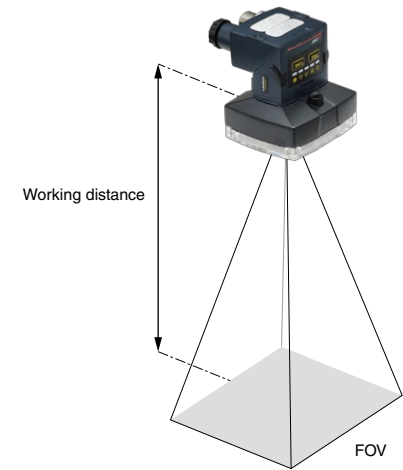
*1. The resolutions of VS20M-13F410 and VS20C-13F410 are 640 × 480 pixels. The resolutions can be set as 800 × 600 pixels in In-Sight Explorer.
For details, refer to In-Sight Explorer Help.

*2. Maximum frame rate at minimum exposure. No connection of In-Sight Explorer. Image resolution: 640 × 480

*3. For VS20M-12F410/13F410, the speed when 2 × image magnification is ON.

*4. When an I/O module is connected, the high speed output is only sink current up to 50 mA, and the general-purpose output is sink or source current up to 100 mA which can be set by the user.

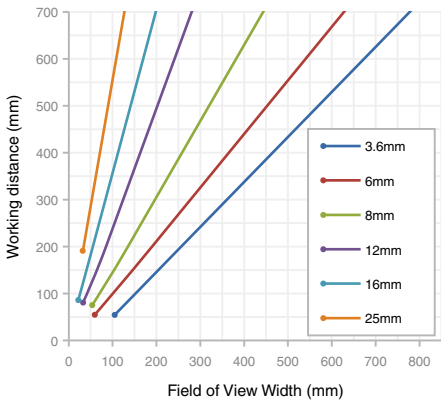
Working distance



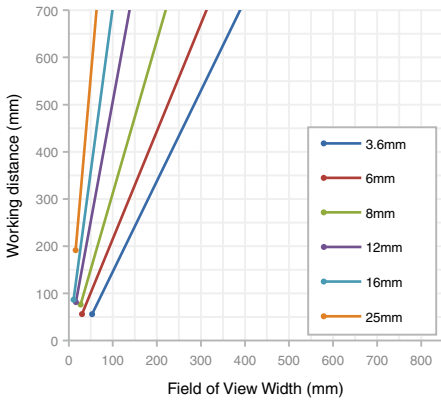
Select working distance*1 and lens in accordance with the field of view referring to the graph below.

*1. The distance from a lens to an inspection target

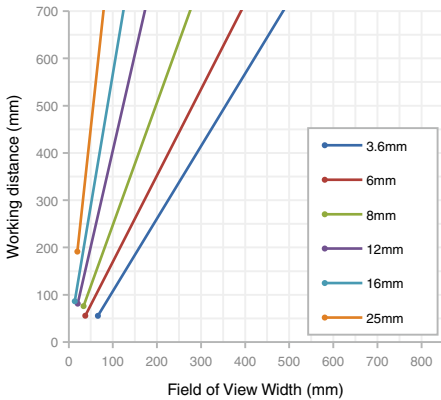
Horizontal Field of View
(640 × 480 (default))



Horizontal Field of View
(640 × 480 (2 × image magnification mode))



Horizontal Field of View
(800 × 600 (2 × image magnification mode))

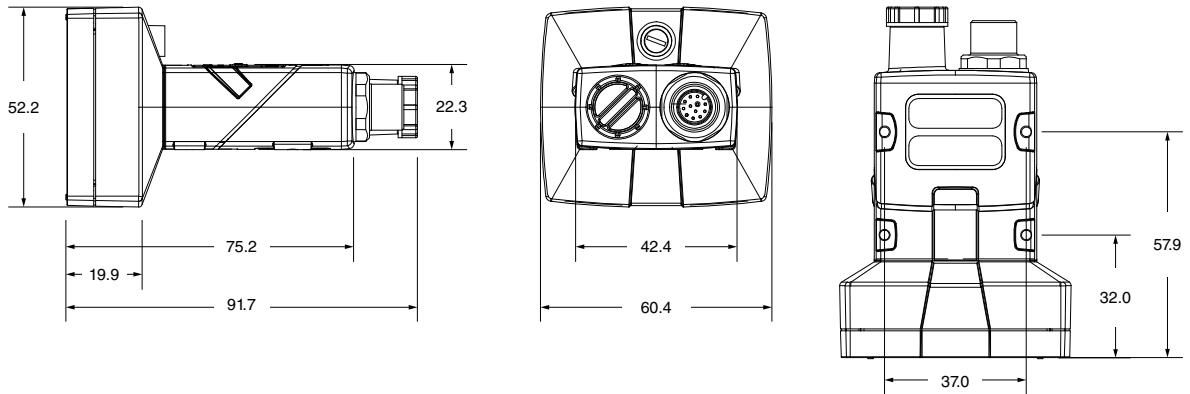


External dimensions

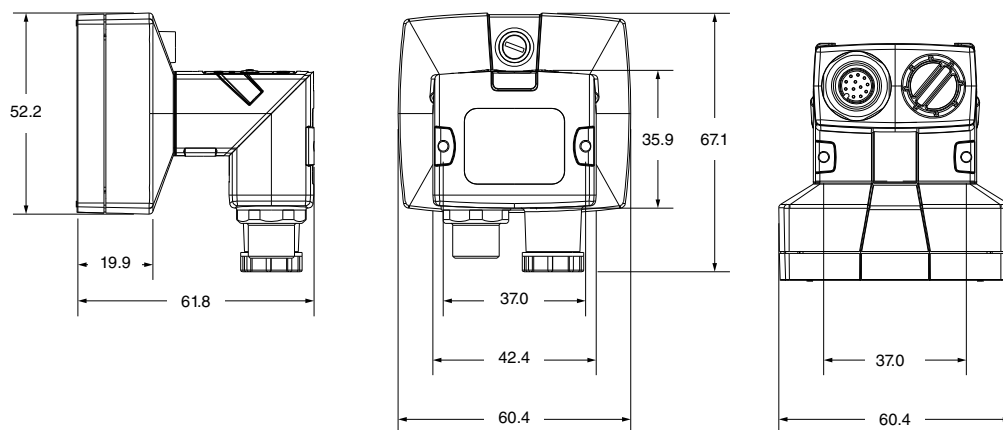
(unit: mm)

VS20

In-line configuration

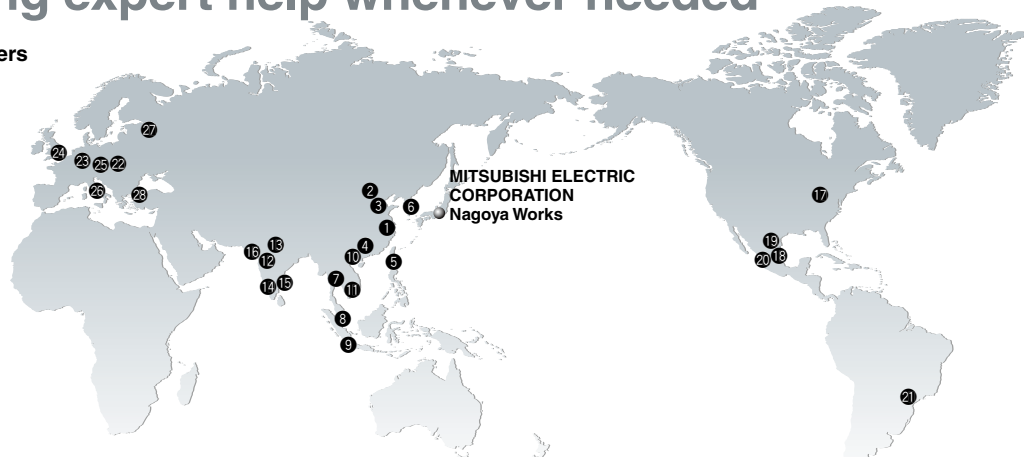


Right-angle configuration



Extensive global support coverage providing expert help whenever needed

■ Global FA centers



China

① Shanghai FA Center

MITSUBISHI ELECTRIC AUTOMATION (CHINA) LTD.
Shanghai FA Center

Mitsubishi Electric Automation Center, No.1386
Hongqiao Road, Shanghai, China
Tel: +86-21-2322-3030 / Fax: +86-21-2322-3000

② Beijing FA Center

MITSUBISHI ELECTRIC AUTOMATION (CHINA) LTD.
Beijing FA Center

Unit 901, Office Tower 1, Henderson Centre, 18
Jianguomennei Avenue, Dongcheng District, Beijing,
China
Tel: +86-10-6518-8830 / Fax: +86-10-6518-2938

③ Tianjin FA Center

MITSUBISHI ELECTRIC AUTOMATION (CHINA) LTD.
Tianjin FA Center

Room 2003 City Tower, No.35, Youyi Road, Hexi District,
Tianjin, China
Tel: +86-22-2813-1015 / Fax: +86-22-2813-1017

④ Guangzhou FA Center

MITSUBISHI ELECTRIC AUTOMATION (CHINA) LTD.
Guangzhou FA Center

Room 1609, North Tower, The Hub Center, No.1068,
Xingang East Road, Haizhu District, Guangzhou, China
Tel: +86-20-8923-6730 / Fax: +86-20-8923-6715

Taiwan

⑤ Taipei FA Center

SETSUYO ENTERPRISE CO., LTD.

3F, No.105, Wugong 3rd Road, Wugu District,
New Taipei City 24889, Taiwan
Tel: +886-2-2299-9917 / Fax: +886-2-2299-9963

Korea

⑥ Korea FA Center

MITSUBISHI ELECTRIC AUTOMATION KOREA CO., LTD.

8F, Gangseo Hangang Xi-tower A, 401, Yangcheon-ro,
Gangseo-Gu, Seoul 07528, Korea
Tel: +82-2-3660-9632 / Fax: +82-2-3664-0475

Thailand

⑦ Thailand FA Center

MITSUBISHI ELECTRIC FACTORY AUTOMATION
(THAILAND) CO., LTD.

12th Floor, SV.City Building, Office Tower 1, No. 896/19
and 20 Rama 3 Road, Kwaeng Bangpongpan, Khet
Yannawa, Bangkok 10120, Thailand
Tel: +66-2682-6522-31 / Fax: +66-2682-6020

ASEAN

⑧ ASEAN FA Center

MITSUBISHI ELECTRIC ASIA PTE. LTD.

307 Alexandra Road, Mitsubishi Electric Building,
Singapore 159943
Tel: +65-6470-2480 / Fax: +65-6476-7439

Indonesia

⑨ Indonesia FA Center

PT. MITSUBISHI ELECTRIC INDONESIA
Cikarang Office

Jl. Kenari Raya Blok G2-07A Delta Silicon 5, Lippo
Cikarang - Bekasi 17550, Indonesia
Tel: +62-21-2961-7797 / Fax: +62-21-2961-7794

Vietnam

⑩ Hanoi FA Center

MITSUBISHI ELECTRIC VIETNAM COMPANY LIMITED
Hanoi Branch Office

6th Floor, Detech Tower, 8 Ton That Thuyet Street, My
Dinh2 Ward, Nam Tu Liem District, Hanoi, Vietnam
Tel: +84-4-3937-8075 / Fax: +84-4-3937-8076

⑪ Ho Chi Minh FA Center

MITSUBISHI ELECTRIC VIETNAM COMPANY LIMITED

Unit 01-04, 10th Floor, Vincom Center, 72 Le Thanh Ton
Street, District 1, Ho Chi Minh City, Vietnam
Tel: +84-8-3910-5945 / Fax: +84-8-3910-5947

India

⑫ India Pune FA Center

MITSUBISHI ELECTRIC INDIA PVT. LTD.
Pune Branch

Emerald House, EL-3, J Block, M.I.D.C., Bhosari, Pune -
411026, Maharashtra, India
Tel: +91-20-2710-2000 / Fax: +91-20-2710-2100

⑬ India Gurgaon FA Center

MITSUBISHI ELECTRIC INDIA PVT. LTD.
Gurgaon Head Office

2nd Floor, Tower A & B, Cyber Greens, DLF Cyber City,
DLF Phase-III, Gurgaon-122002, Haryana, India
Tel: +91-124-463-0300 / Fax: +91-124-463-0399

⑭ India Bangalore FA Center

MITSUBISHI ELECTRIC INDIA PVT. LTD.
Bangalore Branch

Prestige Emerald, 6th Floor, Municipal No.2, Madras
Bank Road, Bangalore - 560001, Karnataka, India
Tel: +91-80-4020-1600 / Fax: +91-80-4020-1699

⑮ India Chennai FA Center

MITSUBISHI ELECTRIC INDIA PVT. LTD.
Chennai Branch

Citilights Corporate Centre No. 1, Vivekananda Road,
Srinivasa Nagar, Chetpet, Chennai - 600031, Tamil
Nadu, India
Tel: +91-4445548772 / Fax: +91-4445548773

⑯ India Ahmedabad FA Center

MITSUBISHI ELECTRIC INDIA PVT. LTD.
Ahmedabad Branch

B/4, 3rd Floor, SAFAL Profitaire, Corporate Road,
Prahalaadnagar, Satellite, Ahmedabad - 380015, Gujarat,
India
Tel: +91-7965120063

Americas

⑰ North America FA Center

MITSUBISHI ELECTRIC AUTOMATION, INC.

500 Corporate Woods Parkway, Vernon Hills, IL 60061,
U.S.A.
Tel: +1-847-478-2469 / Fax: +1-847-478-2253

⑱ Mexico City FA Center

MITSUBISHI ELECTRIC AUTOMATION, INC.
Mexico Branch

Mariano Escobedo #69, Col.Zona Industrial,
Tlalnepantla Edo. Mexico, C.P.54030
Tel: +52-55-3067-7511

⑲ Mexico Monterrey FA Center

Mitsubishi Electric Automation, Inc. Monterrey Office

Plaza Mirage, Av. Gonzalitos 460 Sur, Local 28, Col. San
Jeronimo, Monterrey, Nuevo Leon, C.P. 64640, Mexico
Tel: +52-55-3067-7521

⑳ Mexico FA Center

Mitsubishi Electric Automation, Inc. Queretaro Office

Parque Tecnológico Innovación Queretaro Lateral
Carretera Estatal 431, Km 2 200, Lote 91 Modulos
1 y 2 Hacienda la Machorra, CP 76246, El Marques,
Queretaro, Mexico
Tel: +52-442-153-6014

Brazil

㉑ Brazil FA Center

MITSUBISHI ELECTRIC DO BRASIL COMÉRCIO E
SERVIÇOS LTDA.

Avenida Adelino Cardana, 293, 21 andar, Bethaville,
Barueri SP, Brazil
Tel: +55-11-4689-3000 / Fax: +55-11-4689-3016

Europe

㉒ Europe FA Center

MITSUBISHI ELECTRIC EUROPE B.V. Polish Branch

ul. Krakowska 50, 32-083 Balice, Poland
Tel: +48-12-347-65-81 / Fax: +48-12-630-47-01

㉓ Germany FA Center

MITSUBISHI ELECTRIC EUROPE B.V. German Branch

Mitsubishi-Electric-Platz 1, 40882 Ratingen, Germany
Tel: +49-2102-486-0 / Fax: +49-2102-486-1120

㉔ UK FA Center

MITSUBISHI ELECTRIC EUROPE B.V. UK Branch

Travellers Lane, Hatfield, Hertfordshire, AL10 8XB, U.K.
Tel: +44-1707-27-8780 / Fax: +44-1707-27-8695

㉕ Czech Republic FA Center

MITSUBISHI ELECTRIC EUROPE B.V. Czech Branch

Pekarska 621/7, 155 00 Praha 5, Czech Republic
Tel: +420-255 719 200

㉖ Italy FA Center

MITSUBISHI ELECTRIC EUROPE B.V. Italian Branch

Centro Direzionale Colleoni - Palazzo Sirio, Viale
Colleoni 7, 20864 Agrate Brianza (Milano), Italy
Tel: +39-039-60531 / Fax: +39-039-6053-312

㉗ Russia FA Center

MITSUBISHI ELECTRIC (RUSSIA) LLC ST.
Petersburg Branch

Piskarevsky pr. 2, bld 2, lit "Sch", BC "Benua", office
720; 195027, St. Petersburg, Russia
Tel: +7-812-633-3497 / Fax: +7-812-633-3499

㉘ Turkey FA Center

MITSUBISHI ELECTRIC TURKEY A.Ş Ümraniye Branch

Serifali Mahallesi Nutuk Sokak No:5, TR-34775
Ümraniye / Istanbul, Turkey
Tel: +90-216-526-3990 / Fax: +90-216-526-3995

Cognex, In-Sight and PatMax RedLine are registered trademarks of Cognex Corporation.
Ethernet is a trademark of Xerox Corporation.
MODBUS is a registered trademark of Schneider Electric USA, Inc.
All other company names and product names used in this document are trademarks or registered trademarks of their respective companies.

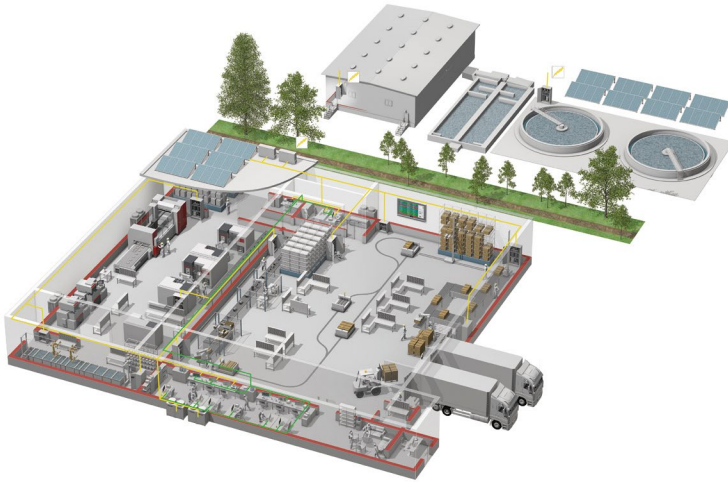
Precautions before use

This publication explains the typical features and functions of the products herein and does not provide restrictions or other information related to usage and module combinations. Before using the products, always read the product user manuals. Mitsubishi Electric will not be held liable for damage caused by factors found not to be the cause of Mitsubishi Electric; opportunity loss or lost profits caused by faults in Mitsubishi Electric products; damage, secondary damage, or accident compensation, whether foreseeable or not, caused by special factors; damage to products other than Mitsubishi Electric products; or any other duties.

For safe use

- To use the products given in this publication properly, always read the relevant manuals before beginning operation.
- The products have been manufactured as general-purpose parts for general industries, and are not designed or manufactured to be incorporated in a device or system used in purposes related to human life.
- Before using the products for special purposes such as nuclear power, electric power, aerospace, medicine or passenger-carrying vehicles, consult with Mitsubishi Electric.
- The products have been manufactured under strict quality control. However, when installing the products where major accidents or losses could occur if the products fail, install appropriate backup or fail-safe functions in the system.

YOUR SOLUTION PARTNER



Mitsubishi Electric offers a wide range of automation equipment from PLCs and HMIs to CNC and EDM machines.

A NAME TO TRUST

Since its beginnings in 1870, some 45 companies use the Mitsubishi name, covering a spectrum of finance, commerce and industry.

The Mitsubishi brand name is recognized around the world as a symbol of premium quality.

Mitsubishi Electric Corporation is active in space development, transportation, semi-conductors, energy systems, communications and information processing, audio visual equipment and home electronics, building and energy management and automation systems, and has 237 factories and laboratories worldwide in over 121 countries.

This is why you can rely on Mitsubishi Electric automation solution - because we know first hand about the need for reliable, efficient, easy-to-use automation and control in our own factories.

As one of the world's leading companies with a global turnover of over 4 trillion Yen (over \$40 billion), employing over 100,000 people, Mitsubishi Electric has the resource and the commitment to deliver the ultimate in service and support as well as the best products.



Low voltage: MCCB, MCB, ACB



Medium voltage: VCB, VCC



Power monitoring, energy management



Compact and Modular Controllers



Inverters, Servos and Motors



Visualisation: HMIs



Numerical Control (NC)



Robots: SCARA, Articulated arm



Processing machines: EDM, Lasers, IDS

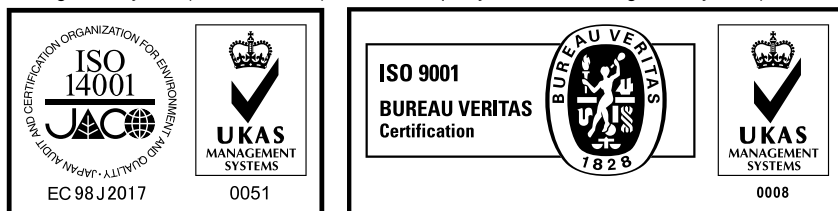


Transformers, Air conditioning, Photovoltaic systems

* Not all products are available in all countries.

Country/Region	Sales office	Tel/Fax
USA	MITSUBISHI ELECTRIC AUTOMATION, INC. 500 Corporate Woods Parkway, Vernon Hills, IL 60061, U.S.A.	Tel : +1-847-478-2100 Fax : +1-847-478-2253
Mexico	MITSUBISHI ELECTRIC AUTOMATION, INC. Mexico Branch Mariano Escobedo #69, Col. Zona Industrial, Tlalnepantla Edo. Mexico, C.P.54030	Tel : +52-55-3067-7500
Brazil	MITSUBISHI ELECTRIC DO BRASIL COMÉRCIO E SERVIÇOS LTDA. Avenida Adelino Cardana, 293, 21 andar, Bethaville, Barueri SP, Brazil	Tel : +55-11-4689-3000 Fax : +55-11-4689-3016
Germany	MITSUBISHI ELECTRIC EUROPE B.V. German Branch Mitsubishi-Electric-Platz 1, 40882 Ratingen, Germany	Tel : +49-2102-486-0 Fax : +49-2102-486-1120
UK	MITSUBISHI ELECTRIC EUROPE B.V. UK Branch Travellers Lane, Hatfield, Hertfordshire, AL10 8XB, U.K.	Tel : +44-1707-28-8780 Fax : +44-1707-27-8695
Ireland	MITSUBISHI ELECTRIC EUROPE B.V. Irish Branch Westgate Business Park, Ballymount, Dublin 24, Ireland	Tel : +353-1-4198800 Fax : +353-1-4198890
Italy	MITSUBISHI ELECTRIC EUROPE B.V. Italian Branch Centro Direzionale Colleoni - Palazzo Sirio, Viale Colleoni 7, 20864 Agrate Brianza (MB), Italy	Tel : +39-039-60531 Fax : +39-039-6053-312
Spain	MITSUBISHI ELECTRIC EUROPE, B.V. Spanish Branch Carretera de Rubí, 76-80-Apdo. 420, 08190 Sant Cugat del Vallés (Barcelona), Spain	Tel : +34-935-65-3131 Fax : +34-935-89-1579
France	MITSUBISHI ELECTRIC EUROPE B.V. French Branch 25, Boulevard des Bouvets, 92741 Nanterre Cedex, France	Tel : +33-1-55-68-55-68 Fax : +33-1-55-68-57-57
Czech Republic	MITSUBISHI ELECTRIC EUROPE B.V. Czech Branch Avenir Business Park, Radlicka 751/113e, 158 00 Praha 5, Czech Republic	Tel : +420-251-551-470 Fax : +420-251-551-471
Poland	MITSUBISHI ELECTRIC EUROPE B.V. Polish Branch ul. Krakowska 50, 32-083 Balice, Poland	Tel : +48-12-347-65-00 Fax : +48-12-630-47-01
Sweden	MITSUBISHI ELECTRIC EUROPE B.V. (Scandinavia) Fjellievägen 8, SE-22736 Lund, Sweden	Tel : +46-8-625-10-00 Fax : +46-46-39-70-18
Russia	MITSUBISHI ELECTRIC (RUSSIA) LLC St. Petersburg Branch Piskarevsky pr. 2, bld 2, lit "Sch", BC "Benua", office 720; 195027 St. Petersburg, Russia	Tel : +7-812-633-3497 Fax : +7-812-633-3499
Turkey	MITSUBISHI ELECTRIC TURKEY A.Ş Ümraniye Branch Serifali Mahallesi Nutuk Sokak No:5, TR-34775 Umraniye/Istanbul, Turkey	Tel : +90-216-526-3990 Fax : +90-216-526-3995
UAE	MITSUBISHI ELECTRIC EUROPE B.V. Dubai Branch Dubai Silicon Oasis, P.O.BOX 341241, Dubai, U.A.E.	Tel : +971-4-3724716 Fax : +971-4-3724721
South Africa	ADROIT TECHNOLOGIES 20 Waterford Office Park, 189 Witkoppen Road, Fourways, South Africa	Tel : +27-11-658-8100 Fax : +27-11-658-8101
China	MITSUBISHI ELECTRIC AUTOMATION (CHINA) LTD. Mitsubishi Electric Automation Center, No.1386 Hongqiao Road, Shanghai, China	Tel : +86-21-2322-3030 Fax : +86-21-2322-3000
Taiwan	SETSUYO ENTERPRISE CO., LTD. 6F, No.105, Wugong 3rd Road, Wugu District, New Taipei City 24889, Taiwan	Tel : +886-2-2299-2499 Fax : +886-2-2299-2509
Korea	MITSUBISHI ELECTRIC AUTOMATION KOREA CO., LTD. 7F-9F, Gangseo Hangang Xi-tower A, 401, Yangcheon-ro, Gangseo-Gu, Seoul 07528, Korea	Tel : +82-2-3660-9530 Fax : +82-2-3664-8372
Singapore	MITSUBISHI ELECTRIC ASIA PTE. LTD. 307 Alexandra Road, Mitsubishi Electric Building, Singapore 159943	Tel : +65-6473-2308 Fax : +65-6476-7439
Thailand	MITSUBISHI ELECTRIC FACTORY AUTOMATION (THAILAND) CO., LTD. 12th Floor, SV.City Building, Office Tower 1, No. 896/19 and 20 Rama 3 Road, Kwaeng Bangpongpan, Khet Yannawa, Bangkok 10120, Thailand	Tel : +66-2682-6522 Fax : +66-2682-6020
Vietnam	MITSUBISHI ELECTRIC VIETNAM CO., LTD. Unit 01-04, 10th Floor, Vincom Center, 72 Le Thanh Ton Street, District 1, Ho Chi Minh City, Vietnam	Tel : +84-8-3910-5945 Fax : +84-8-3910-5947
Indonesia	PT. MITSUBISHI ELECTRIC INDONESIA Gedung Jaya 11th Floor, JL. MH. Thamrin No.12, Jakarta Pusat 10340, Indonesia	Tel : +62-21-3192-6461 Fax : +62-21-3192-3942
India	MITSUBISHI ELECTRIC INDIA PVT. LTD. Pune Branch Emerald House, EL-3, J Block, M.I.D.C., Bhosari, Pune-411026, Maharashtra, India	Tel : +91-20-2710-2000 Fax : +91-20-2710-2100
Australia	MITSUBISHI ELECTRIC AUSTRALIA PTY. LTD. 348 Victoria Road, P.O. Box 11, Rydalmere, N.S.W 2116, Australia	Tel : +61-2-9684-7777 Fax : +61-2-9684-7245

Mitsubishi Electric Corporation Nagoya Works is a factory certified for ISO 14001 (standards for environmental management systems) and ISO 9001 (standards for quality assurance management systems).



MITSUBISHI ELECTRIC CORPORATION

HEAD OFFICE: TOKYO BLDG., 2-7-3, MARUNOUCHI, CHIYODA-KU, TOKYO 100-8310, JAPAN
www.MitsubishiElectric.com