

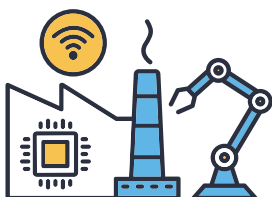
Instruction & Format														
Place	JAN	FEB	MAR	APR	MAY	JUN	JUL	AUG	SEP	OCT	NOV	DEC	JAN	Price
<b>01</b>	<b>Basic PLC (GX Works2) : 2 Days</b>													
TDPK	6-7	3-4	3-4	1-2	6-7	9-10	1-2	4-5	1-2	6-7	3-4	8-9	5-6	6,000.-
					13-14		14-15							
Bowin	13-14	17-18	11-12		22-23	12-13	8-9	7-8	4-5		13-14		12-13	
Automation Park		13-14	6-7			26-27		28-29		9-10		18-19		
Lamphun							30-31							
Korat									16-17					
TGI		13-14			29-30					30-31				
TPA		20-21			19-20			21-22		16-17				
<b>02</b>	<b>Basic PLC (GX Work3) : 2 Days</b>													
TDPK	20-21	27-28	10-11	8-9	8-9	16-17	3-4	18-19	8-9	20-21	10-11	15-16	19-20	6,000.-
			24-25						15-16					
Bowin	27-28	24-25		1-2	15-16	5-6	17-18		17-18	2-3	6-7	25-26	26-27	
Automation Park			27-28	24-25	22-23		17-18		11-12		20-21			
Lamphun		4-5												
Korat							30-31							
<b>03</b>	<b>Advance PLC (GX Work2) : 3 Days</b>													
TDPK	8-10	19-21	12-14	23-25	19-21	4-6	16-18	6-8	10-12	1-3	17-19	1-3	7-9	10,000.-
Bowin	15-17	26-28	26-28		28-30		23-25	20-22		8-10	26-28	17-19	14-16	
Automation Park		19-21				18-20				15-17		24-26		
Lamphun									23-25					
Korat		4-6												
<b>04</b>	<b>Advance PLC (GX Work3) : 3 Days</b>													
TDPK	22-24	5-7	19-21	28-30	26-28	11-13	7-9	27-29	24-26	15-17	24-26	22-24	21-23	10,000.-
Bowin	29-31												28-30	
Automation Park				2-4										
Lamphun							15-17							
Korat										28-30				
<b>05</b>	<b>SFC (iQ-R Series) : 1 Day</b>													
TDPK		26			19		29				12			3,000.-
Bowin									19					
Lamphun	28												27	
Korat			13											
<b>06</b>	<b>Structure Text (iQ-R series) : 1 Day</b>													
TDPK			31			13			10			29		3,000.-
Lamphun												16		
Korat				29										
<b>07</b>	<b>FBD/LD : 1 Day</b>													
TDPK	15					30		1		22			14	3,000.-

Drive														
Place	JAN	FEB	MAR	APR	MAY	JUN	JUL	AUG	SEP	OCT	NOV	DEC	JAN	Price
<b>01</b>	<b>Basic Inverter : 1 Day</b>													
TDPK	29	27	26		26	18	21	20	3	14	19	4	28	3,000.-
Bowin	24			3	14		7			22		9	23	
Lamphun						24								
Korat											4			
<b>02</b>	<b>Advance Inverter (PLC Function) : 1 Day</b>													
TDPK	30	28			27		22	27		15	20		29	3,000.-
Lamphun						25								
Korat											5			
<b>03</b>	<b>P.M. Inverter : 1 Day</b>													
TDPK	31				28						21		30	3,000.-
<b>04</b>	<b>Basic Servo : 2 Days</b>													
TDPK	6-7	3-4	3-4		6-7	23-24	1-2	4-5	1-2	27-28	3-4	3-4	5-6	6,000.-
				21-22			14-15		22-23		17-18			
Bowin		20-21				9-10		14-15		16-17				
<b>05</b>	<b>Motion Controller (Q Series) : 3 Days</b>													
TDPK	29-31	24-26			13-15		7-9		17-19		12-14		28-30	10,000.-
Bowin					19-21			27-29				22-24		
<b>06</b>	<b>Positioning (QD75) : 1 Day</b>													
TDPK		25		23	30		29		3					3,000.-
Visualize														
Place	JAN	FEB	MAR	APR	MAY	JUN	JUL	AUG	SEP	OCT	NOV	DEC	JAN	Price
<b>01</b>	<b>Basic GOT : 2 Days</b>													
TDPK	13-14	10-11	17-18	3-4	15-16	5-6	21-22	7-8	4-5	1-2	6-7	8-9	12-13	6,000.-
Bowin		6-7	4-5		8-9	26-27	30-31		11-12		20-21	3-4		
Automation Park			13-14							30-31				
Lamphun											11-12			
Korat								19-20						
<b>02</b>	<b>Advance GOT : 2 Days</b>													
TDPK	16-17	17-18	6-7		22-23	9-10	24-25	21-22	18-19	9-10	27-28	18-19	15-16	6,000.-
<b>03</b>	<b>SCADA : 2 Days</b>													
TDPK	27-28			1-2	29-30	19-20	3-4	28-29	4-5	6-7	13-14	1-2	26-27	8,000.-
<b>04</b>	<b>SCADA Extended : 3 Days</b>													
TDPK		5-7				23-25		13-15		29-31		15-17		12,000.-
Lamphun			11-13											
Korat									23-25					
Robotic														
Place	JAN	FEB	MAR	APR	MAY	JUN	JUL	AUG	SEP	OCT	NOV	DEC	JAN	Price
<b>01</b>	<b>Basic Robot (iQ Platform) : 2 Days</b>													
TDPK		10-11	20-21			26-27	24-25		29-30	20-21		22-23		12,000.-
TGI	16-17				8-9			7-8			27-28		15-16	

Data Collect														Price
Place	JAN	FEB	MAR	APR	MAY	JUN	JUL	AUG	SEP	OCT	NOV	DEC	JAN	Price
<b>01</b>	<b>MX Sheet : 1 Day</b>													
TDPK		24	31			30		6		8		17		3,000.-
<b>02</b>	<b>Data Logger (Q Series) : 2 Days</b>													
TDPK			24-25					25-26				25-26		
Lamphun										21-22				6,000.-
Korat					28-29									
<b>03</b>	<b>Data Logger (iQ-R Series) : 2 Days</b>													
Bowin						19-20								
Lamphun		26-27												6,000.-
Korat							22-23							
<b>04</b>	<b>MES(Q Series) : 2 Days</b>													
TDPK	16-17		10-11		22-23		17-18		8-9		10-11		15-16	
Lamphun								19-20						6,000.-
Korat						10-11								
<b>05</b>	<b>MES (iQ-R Series) : 2 Days</b>													
Bowin		10-11												
Lamphun									16-17					6,000.-
Korat												16-17		
Network														Price
Place	JAN	FEB	MAR	APR	MAY	JUN	JUL	AUG	SEP	OCT	NOV	DEC	JAN	Price
<b>01</b>	<b>CC Link : 2 Days</b>													
TDPK			17-18			26-27		18-19		8-9		18-19		
Bowin	9-10				26-27				2-3		10-11		8-9	6,000.-
Lamphun					14-15									
Korat								13-14						
<b>02</b>	<b>CC Link IE Field : 2 Days</b>													
TDPK	20-21		27-28		8-9		30-31	25-26	22-23	29-30			19-20	
Bowin								4-5						6,000.-
Lamphun						10-11								
Korat											18-19			
<b>03</b>	<b>CC Link IE Control : 2 Days</b>													
TDPK		13-14				19-20			29-30			29-30		6,000.-
<b>04</b>	<b>Ethernet : 3 Days</b>													
TDPK	22-24		19-21			16-18		13-15		20-22		22-24	12-13	
Lamphun											18-20			10,000.-
Korat		18-20												
<b>01</b>	<b>SMKL : 1 Day</b>													
TDPK					16									
Automation Park								27						3,000.-
TPA											28			

## รายชื่อหลักสูตร Special Course พร้อมเปิดสอน

Type	Course	Period (day)
<b>FA Software</b>	1. 3D Gemini Simulator Software (Basic)	2
<b>Controller</b>	1. DeviceNet (Q series)	1
	2. Modbus RTU built-in CPU (FX5UCPU)	1
	3. Modbus TCP built-in CPU (FX5UCPU, QnUDCPU, iQRCPU)	1
	4. Safety PLC (iQ-R series)	2
	5. iQ-R OPC UA Module	1
	6. Q to iQ-R Transision	1
<b>FA Network</b>	1. CC-Link IE Field TSN (iQ-R series)	2
	2. CC-Link IE Field Safety (iQ-R series)	2
	3. CC-Link IE Field Basic (FX5UCPU, QnUDCPU, iQRCPU)	2
	4. Simple PLC Communication (FX5UCPU, QnUDVCP, iQRCPU)	1
<b>Data Collection</b>	1. Data logger Module Advance Function (Q series, iQ-R series)	1
	2. CPU Module Logging Function (FX5UCPU, QnUDVCP, iQRCPU)	1
	3. GOT Logging Function	1
	4. GOT MES/IF Function	1
<b>Data Visualization</b>	1. CPU Webserver function (FX5UCPU, iQRCPU)	1
	2. GOT Mobile and VNC server function	1
<b>Drive/Robot/Vision</b>	1. P.M Servo	1
	2. FX5U Built-in Positioning Control	2
	3. Simple Motion Module (QD77, RD77)	1
	4. MELFA Assista Cobot	2
	5. MELFA Robot Force Sensor	1
	6. Melsensor Vision	2
	7. ME96 Power meter (Modbus Protocol)	1
	8. RS485 communication Inverter	1
	9. CC-IE basic Network Inverter	1
	10. iQ Platform Robot and Vision Control	1
<b>Other</b>	1. SMKL course for OEE	2
	2. iQ Manufacturing SME (SMKL)	2
	3. SMKL course for Guardbrand Function	1



### By requestes

Customers can request courses according to their needs.

### สอบถามรายละเอียดการอบรมได้ที่แผนกฝึกอบรม

บริษัท Mitsubishi Electric Factory Automation (Thailand) Co.,Ltd

Tel. (Office) +662-092-8600, Mobile : 089-900-7806